



TOLI CARPET TILE
GRAND ART

GA-100 series



MADE IN JAPAN



[GA-100T] LINE UP

SHINE MARBLE

NEW

CATALOG p.5-6



GA10711T



GA10712T



GA10713T



GA10717T



GA10714T



GA10715T



GA10716T



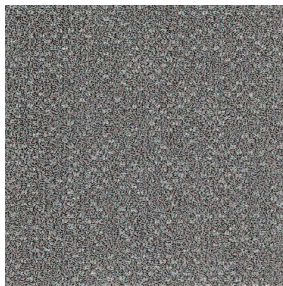
GA10718T



GA10719T

BRIGHT PLAIN

CATALOG p.7-8



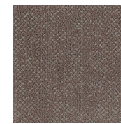
GA10232T NEW



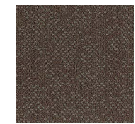
GA10233T NEW



GA10234T NEW



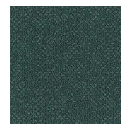
GA10235T NEW



GA10236T NEW



GA10225T NEW



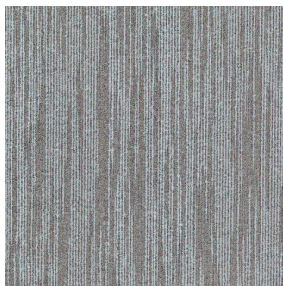
GA10226T NEW



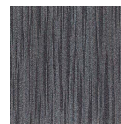
GA10227T NEW

SPEAR LINE

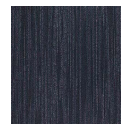
CATALOG p.9-10



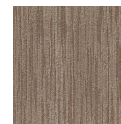
GA10332T NEW



GA10333T NEW



GA10334T NEW



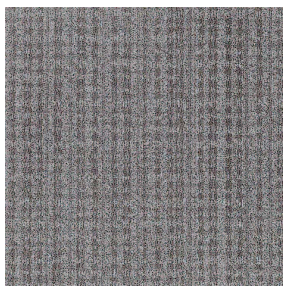
GA10335T NEW



GA10336T NEW

SOFT GRID

CATALOG p.11-12



GA10632T NEW



GA10633T NEW



GA10634T NEW



GA10635T NEW



GA10636T NEW



In 2015, GA-100 series won "Good Design Long Life Design Award", the President' Award of the Japan Institute of Design Promotion. This is given to the designs that build our life, and hopefully will continue to play that role in the future as well.

TOLI nylon carpet tile products including GA-100 series contribute to the acquisition of LEED points, which is an international standard set by the U.S. Green Building Council.

Green Label Plus is a program organized by the United States Carpet and Rug Institute (CRI) which certifies indoor air quality. This certification will contribute to the acquisition of points via the "LEED v4 EQ Credit Low-Emitting Materials" credit. TOLI was the first in Japan to obtain the Green Label Plus certification for carpet tiles.



This product is suitable for Type 1 carpet tiles according to the Public Japanese Architectural Standard Specification manual and has a reliable quality design.

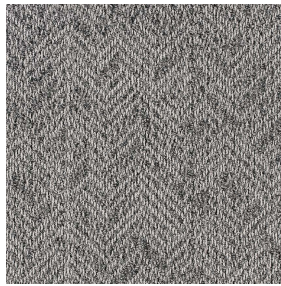
All GA-100 series products have high durability, with a pile weight per square meter which meets the requirement of Type 1 products in the Public Japanese Architectural Standard Specification manual.

[GA-100W] LINE UP

RANDOM HERRING

NEW

CATALOG p.13-14



GA1651W



GA1652W



GA1653W



GA1654W



GA1655W



GA1656W

SHADOW BLOCK

CATALOG p.15-16



GA1969W **NEW**



GA1970W **NEW**



GA1971W **NEW**



GA1960W



GA1961W



GA1962W



GA1963W



GA1957W

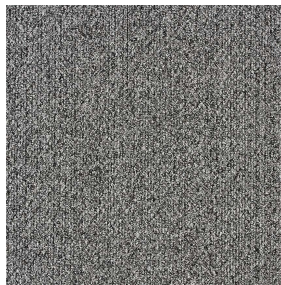


GA1972W **NEW**

SAND II

NEW

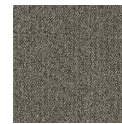
CATALOG p.17-18



GA1851W



GA1852W



GA1853W



GA1854W

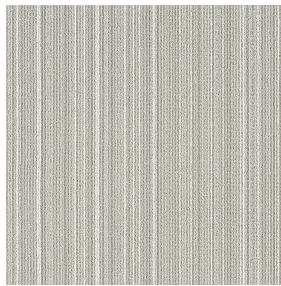


GA1855W

SILKY LINE II

NEW

CATALOG p.19-20



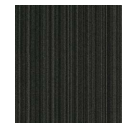
GA1751W



GA1752W



GA1753W



GA1754W



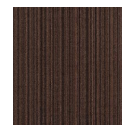
GA1764W



GA1757W



GA1758W



GA1759W



GA1762W



GA1763W



GA1761W



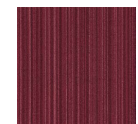
GA1760W



GA1755W



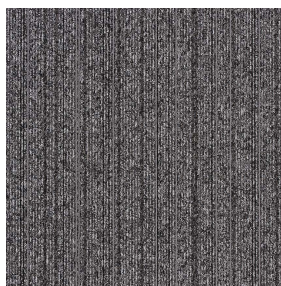
GA1756W



GA1765W

RANDOM

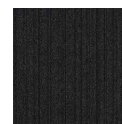
CATALOG p.21-22



GA1414W **NEW**



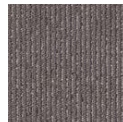
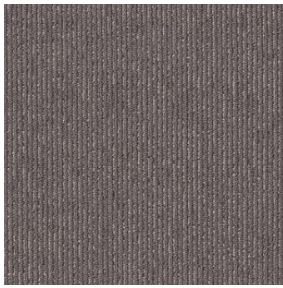
GA1412W **NEW**



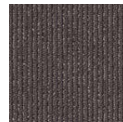
GA1413W **NEW**

[GA-100S] LINE UP

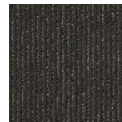
CATALOG p.23



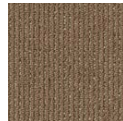
GA1205S



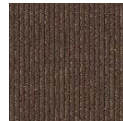
GA1206S



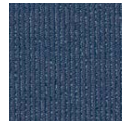
GA1207S
GAN1207S



GA1214S **NEW**



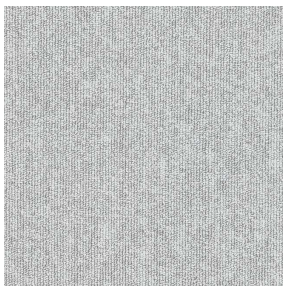
GA1215S **NEW**



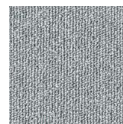
GA1209S

[GA-100] LINE UP

CATALOG p.24



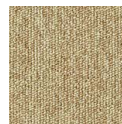
GA1033



GA125
GAN125 GEM125
GSA125



GA155
GAN155 GEM155



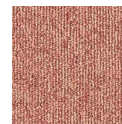
GA194



GA144
GSA144



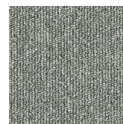
GA159



GA191



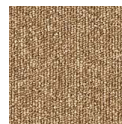
GA126
GSA126



GA136



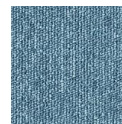
GA139



GA1028



GA1040 **NEW**



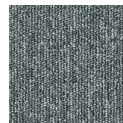
GA149
GEM149 GSA149



GA196



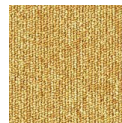
GA163
GAN163 GEM163



GA108



GA1006



GA190



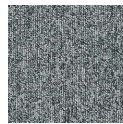
GA1041 **NEW**



GA1043 **NEW**
GAN1043



GA1021



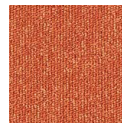
GA1046 **NEW**



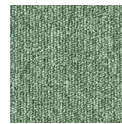
GA164



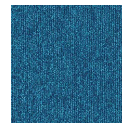
GA1038 **NEW**



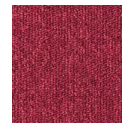
GA1025



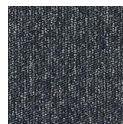
GA113



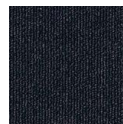
GA1044 **NEW**



GA193



GA165
GAN165 GEM165



GA1002



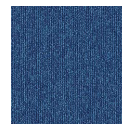
GA1026



GA1007



GA1042 **NEW**



GA1045 **NEW**



GA1019

Guide to product numbers other than regular GA-100

Self adhesive (GA-100N) GAN + Color Number (e.g. GAN194)	Ecomark-certified product (GA-100EM) GEM + Color Number (e.g. GEM194)	Super antistatic (GA-100SA) GSA + Color Number (e.g. GSA194)
---	--	---

The color codes of the product number of the above types listed under the color samples are always in stock.
For details, refer to p.25.



JIS Standard Certified product

GA-100 and GA-100S are JIS standard certified products.



Recommended product by the Research Institute of Educational Facilities

GA-100 and GA-100S are recognized as a recommended product provided for use in school facilities that meets the quality performance standards required for education use by the Research Institute of Educational Facilities.

[TOLI's excellent technical capabilities]

The presence or absence of Stain Release, as well as the difference in the material and weight per unit area, make a difference in maintaining a beautiful appearance, even in the short run. The GA-100 series delivers reliable quality cultivated over a long history.

Stain Release All products are antifouling finished.



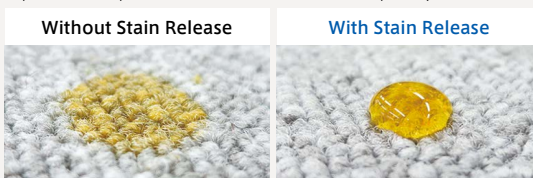
Water and Oil-Repellent using fluororesin

TOLI nylon carpet tile products have Stain Release property by fluoridation. Because of its antifouling effect, stains are not easily stuck to the surface and a good appearance can last. It also shows an excellent water & oil repellent performance. Even if water or oil is spilt, the surface of the tiles will repel them. Once you wipe them off, the stain cannot be left.

*Some yarns, such as those with hollow fibers, are called anti-stain yarns because they have the property of making the dirt inconspicuous, but they are not in fact water / oil repellent. TOLI carpet is protected against dirt thanks to the application of water and oil repellent finishes.

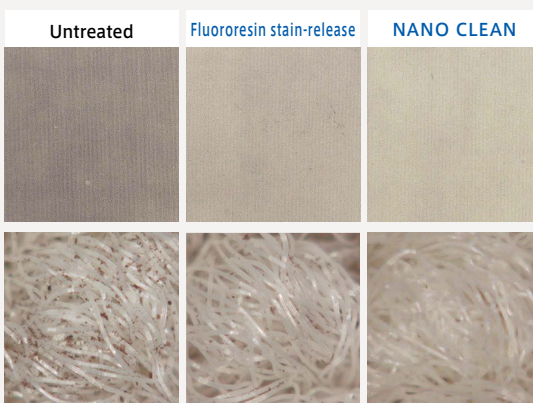
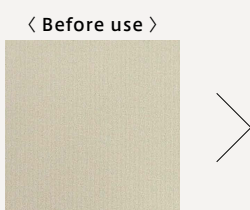
Results of water repellency test

Products treated with stain-release using fluororesin repel liquid, and liquid does not soak into them quickly.



In addition to stain-release using fluororesin, NANO CLEAN with special Nano processing has been introduced.

NANO CLEAN adds a special Nano finish to the existing stain release finish using fluororesin, and thus shows even more superior stain release performance to dirt and sand.



Observation with a microscope

There is a clear difference in the accumulation of dirt between untreated products, products processed with fluororesin (current products), and NANO CLEAN.

NANO CLEAN processed product numbers
GA1033·GA10711T·GA10714T·GA1751W

* Product numbers other than those listed above can also be processed. Please contact a TOLI sales representative for further information.

Test contents

Uncolored products were used. Untreated products, products processed with fluororesin, and products processed with NANO CLEAN were installed in a general office for 5 weeks, and the position was rotated every day to compare the degree of contamination.

* The test was conducted without cleaning. By combining TOLI's antifouling treatment and appropriate maintenance, a more beautiful appearance can be maintained.

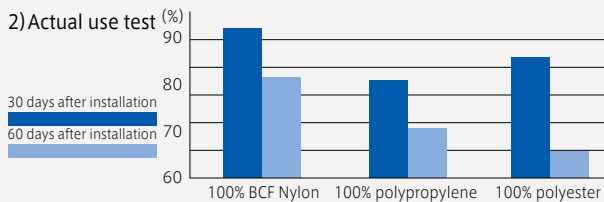
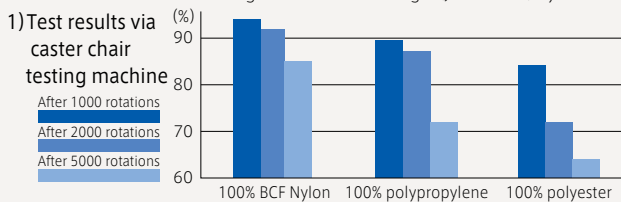
Durability Uses BCF nylon with a reliable weight per unit area



Durable BCF nylon

All GA-100 series products use highly durable BCF nylon. When compared to other materials, BCF nylon is less susceptible to settling / sagging, and, if it does settle or sag, has high resilience and rebounding power.

<Durability in relation to settling / sagging by material> Durability evaluation of BCF nylon, polypropylene and polyester Results of dimensional change and rate of change (JIS L 4406) by caster chair



In both tests 1) and 2), the pile retention is the highest in BCF nylon, which is about twice as durable as polypropylene. As the period of use increases, the difference in material becomes more prominent.



Pile weight on the top of base fabric meets the requirement of Type 1 (heavy traffic).

All GA-100 series products have high durability, with a pile weight per square meter which meets the requirement of Type 1 products in the Public Japanese Architectural Standard Specification manual.

■ Durability against settling / sagging by weight per unit area
Traffic: approx. 2,500 people / day

Same yarn weight as TOLI GA-100 Series or more



* BCF nylon has excellent durability, but it becomes susceptible to settling / sagging when the pile mass is small.

Approx. 30% lower yarn weight than TOLI GA-100 Series



* The values are in-house test values and are therefore not guaranteed.

NEW

[GA-100T] SHINE MARBLE



Composition

Pile BCF Nylon 100%
Backing PVC and Glass Fiber

Specification

Pile Height H6.5mm to L3mm
Textured Loop Pile

Overall Thickness 7.5mm

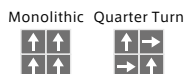
Size 500mm×500mm
1/10 gauge, 12.0 stitches/inch

Package 20 pcs/box = 5m²/box

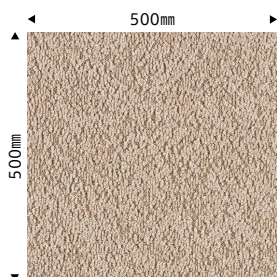
Flame-Retardant Performance Test No. E2200143
Antistatic property on human body: 1.0 kv or less (JIS L 1021-16 at 23°C, 25%RH, synthetic rubber sole)
Stain-Resistant / Stain-release using fluororesin <Only GA10711T and GA10714T are finished with NANO CLEAN (special stain-release).>

- The surface patterns do not connect. Please check how it looks by room scene images.
- Can be installed both monolithic and quarter turn. For monolithic installation, if the color difference and joints of each carpet tile stand out, replace the position of some tiles.
- Right after installation, color shading may be temporarily seen. This is because piles are partially crushed, which will be recovered over time.

<Made-to-Order>
For GA-100T standard colors, NANO CLEAN (special stain-release) finish is also available on a made-to-order basis.
*Please contact TOLI sales reps for further information.



Way of Installation	Sub-floor	Required Qty of Adhesive
Installed with tackifier adhesive (ECO GA Cement)	Steel/Plastic/Vinyl Tile	40 to 60 g/ m ²
	Dried mortar/Wooden flooring (plywood, etc.)	60 to 100 g/ m ²



GA10711T
Beige

NEW
NANO CLEAN



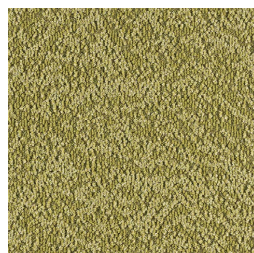
GA10712T
Light Brown

NEW



GA10713T
Dark Brown

NEW



GA10717T
Green

NEW



GA10714T
Pale Gray

NEW
NANO CLEAN

Beautiful pattern reminiscent of shiny marble stone. 3 dimensional loop-pile structure and non-directional design will convey a spacious feeling on the floor.



Monolithic
 GA10716T · GA10718T



Monolithic
 GA10711T · GA10713T



GA10717T



GA10715T
 Dark Gray



NEW GA10716T
 Black



NEW GA10718T
 Navy



NEW GA10719T
 Purple

[GA-100T] BRIGHT PLAIN



Monolithic



GA10232T·GA10234T

Composition

Pile BCF Nylon 100%
Backing PVC and Glass Fiber

Specification

Pile Height H5.5mm to L3mm
Textured Loop Pile

Overall Thickness 7.8mm
Size 500mm×500mm
1/10 gauge, 12.5 stitches/inch
Package 20 pcs/box = 5m²/box

Flame-Retardant Performance Test No. E2170232
Antistatic property on human body: 1.0 kv or less (JIS L 1021-16 at 23°C, 25%RH, synthetic rubber sole)
Stain-Resistant / Stain-release using fluororesin

- The surface patterns do not connect. Please check how it looks by room scene images.
- Can be installed both monolithic and quarter turn. For monolithic installation, if the color difference and joints of each carpet tile stand out, replace the position of some tiles.
- Right after installation, color shading may be temporarily seen. This is because piles are partially crushed, which will be recovered over time.

<Made-to-Order>

For GA-100T standard colors, NANO CLEAN (special stain-release) finish is also available on a made-to-order basis.
*Please contact TOLI sales reps for further information.



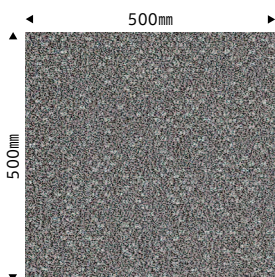
* Design registered



Monolithic Quarter Turn



Way of Installation	Sub-floor	Required Qty of Adhesive
Installed with tackifier adhesive (ECO GA Cement)	Steel/Plastic/Vinyl Tile	40 to 60 g/ m ²
	Dried mortar/Wooden flooring (plywood, etc.)	60 to 100 g/ m ²



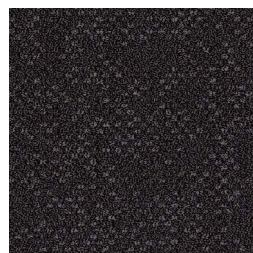
GA10232T
Light Gray

NEW



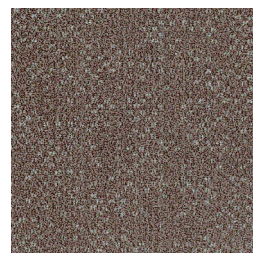
GA10233T
Charcoal Gray

NEW



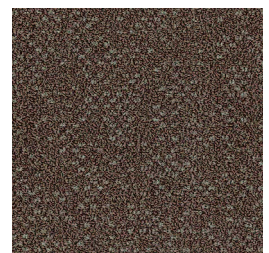
GA10234T
Coal Black

NEW



GA10235T
Greige

NEW



GA10236T
Sepia

NEW

Plain pattern inspired by splendor in the grass.
 Beautiful texture with shiny dots woven in the big loops.



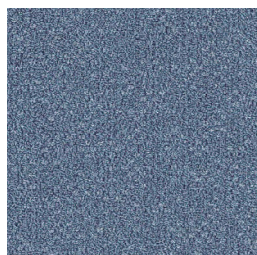
Monolithic
 GA10227T·GA10236T



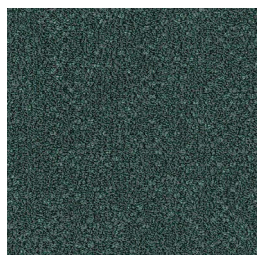
Monolithic
 GA10226T·GA10232T



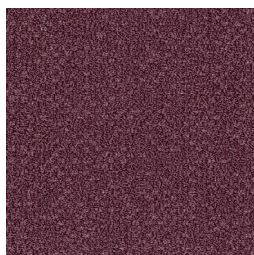
GA10225T



GA10225T
 Light Blue



NEW GA10226T
 Deep Green



NEW GA10227T
 Deep Red

[GA-100T] SPEAR LINE



GA10332T · GA10335T 

Composition

Pile BCF Nylon 100%
Backing PVC and Glass Fiber

Specification

Pile Height H5mm / M4mm / L3mm
Textured Loop Pile

Overall

Thickness 7.5mm

Size 500mm × 500mm

1/10 gauge, 12.0 stitches/inch

Package 20 pcs/box = 5m²/box

Flame-Retardant Performance Test No. E2170233

Antistatic property on human body: 1.0 kv or less (JIS L 1021-16 at 23°C, 25%RH, synthetic rubber sole)

Stain-Resistant / Stain-release using fluororesin

- The surface patterns do not connect. Please check how it looks by room scene images.
- Can be installed both monolithic and quarter turn. For monolithic installation, if the color difference and joints of each carpet tile stand out, replace the position of some tiles.
- Right after installation, color shading may be temporarily seen. This is because piles are partially crushed, which will be recovered over time.

<Made-to-Order>

For GA-100T standard colors, NANO CLEAN (special stain-release) finish is also available on a made-to-order basis.

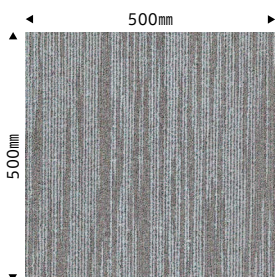
*Please contact TOLI sales reps for further information.



Monolithic Quarter Turn

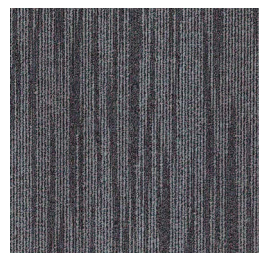


Way of Installation	Sub-floor	Required Qty of Adhesive
Installed with tackifier adhesive (ECO GA Cement)	Steel/Plastic/Vinyl Tile	40 to 60 g/ m ²
	Dried mortar/Wooden flooring (plywood, etc.)	60 to 100 g/ m ²



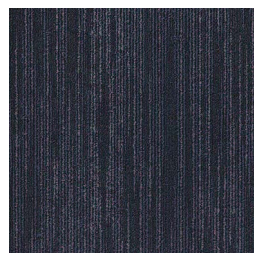
GA10332T
Light Gray

NEW



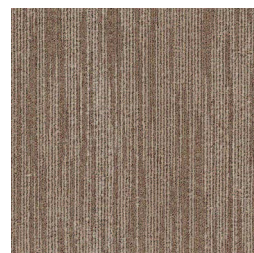
GA10333T
Charcoal Gray

NEW



GA10334T
Coal Black

NEW



GA10335T
Greige

NEW



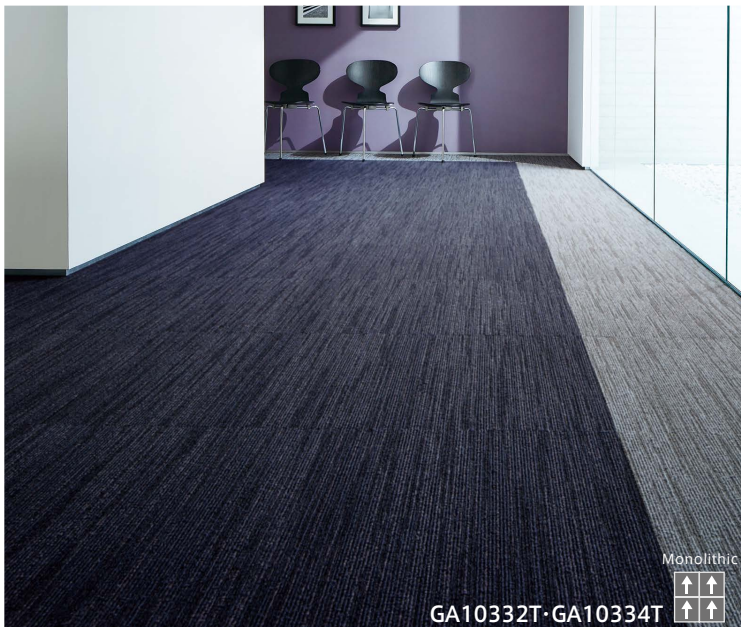
GA10336T
Sepia

NEW

Sterically-made sharp linear pattern.
Characterized by fine expression of shiny yarns and dynamic image akin to KASURI.



Quarter Turn Monolithic
GA10333T  



Monolithic
GA10332T·GA10334T 



GA10336T

[GA-100T] SOFT GRID



GA10635T · GA10636T

Composition

Pile BCF Nylon 100%
Backing PVC and Glass Fiber

Specification

Pile Height H5mm to L3mm
Textured Loop Pile
Overall Thickness 7.8mm
Size 500mm × 500mm
1/10 gauge, 14.0 stitches/inch
Package 20 pcs/box = 5m²/box

Flame-Retardant Performance Test No. E2170234
Antistatic property on human body: 1.0 kv or less
(JIS L 1021-16 at 23° C, 25%RH, synthetic rubber sole)
Stain-Resistant / Stain-release using fluororesin

- The surface patterns do not connect. Please check how it looks by room scene images.
- After installation, if the stripes are connected continuously and cause a strange effect, replace the position of some carpet tiles.
- Can be installed both monolithic and quarter turn. For monolithic installation, if the color difference and joints of each carpet tile stand out, replace the position of some tiles.
- Slight distortion may be felt in the pattern, however this is a special feature of the pattern inspired by the woven fabric.
- Right after installation, color shading may be temporarily seen. This is because piles are partially crushed, which will be recovered over time.
- The color difference on the joints may stand out due to the yarn and pattern alignment.

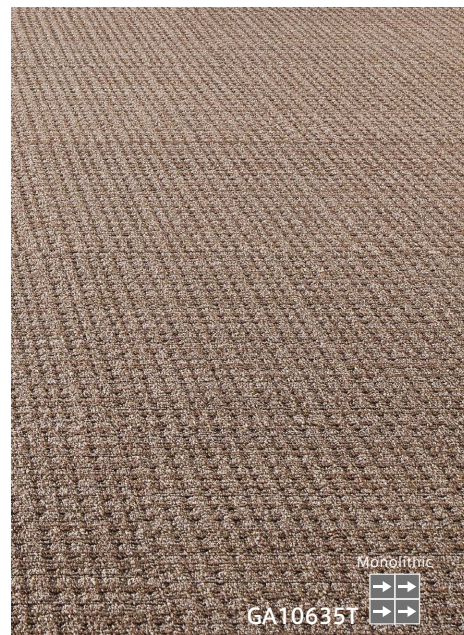
<Made-to-Order>

For GA-100T standard colors, NANO CLEAN (special stain-release) finish is also available on a made-to-order basis.
*Please contact TOLI sales reps for further information.

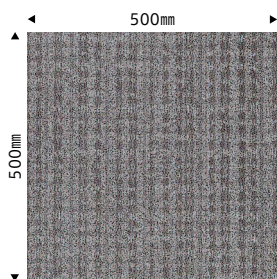


* Design registered

Way of Installation	Sub-floor	Required Qty of Adhesive
Installed with tackifier adhesive (ECO GA Cement)	Steel/Plastic/Vinyl Tile	40 to 60 g/ m ²
	Dried mortar/Wooden flooring (plywood, etc.)	60 to 100 g/ m ²



GA10635T



GA10632T
Light Gray

NEW



GA10633T
Charcoal Gray

NEW



GA10634T
Coal Black

NEW



GA10635T
Greige

NEW



GA10636T
Sepia

NEW

Soft-textured lattice pattern.
With its beautiful crisscross shading, classy atmosphere can be created in your space.



Monolithic
GA10632T·GA10634T



Monolithic
GA10636T



GA10633T

GA-100T has multi-level loop piles in order to express the pattern. This slight height difference on the surface will not affect the movement of caster chairs nor people walking on it when the product is installed in offices and commercial facilities.



NEW

[GA-100W] RANDOM HERRING



Monolithic



GA1654W · GA1655W

Composition

Pile BCF Nylon 100%
Backing PVC and Glass Fiber

Specification

Pile Height H5mm / M4mm / L2.5mm
Textured Loop Pile

Overall

Thickness 6.8mm

Size 500mm × 500mm

1/10 gauge, 11.0 stitches/inch

Package 20 pcs/box = 5m²/box

Flame-Retardant Performance Test No. E2200142

Antistatic property on human body: 1.0 kv or less (JIS L 1021-16 at 23°C, 25%RH, synthetic rubber sole)

Stain-Resistant / Stain-release using fluororesin

●The surface patterns do not connect. Please check how it looks by room scene images.

●Can be installed both monolithic and quarter turn. For monolithic installation, if the color difference and joints of each carpet tile stand out, replace the position of some tiles.

●In order to make the appearance after installation more natural, stripes are deliberately inserted in the original design at a certain rate. These stripes are not product defects, such as scratches due to weaving, etc. After installation, in case the stripes are connected and visually not acceptable, replace the position of some tiles.

<Made-to-Order>

For GA-100W standard colors, NANO CLEAN (special stain-release) finish is also available on a made-to-order basis.

*Please contact TOLI sales reps for further information.

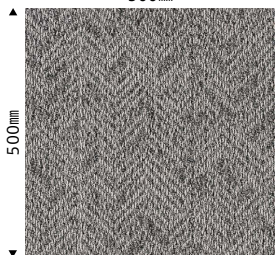


Monolithic Quarter Turn



Way of Installation	Sub-floor	Required Qty of Adhesive
Installed with tackifier adhesive (ECO GA Cement)	Steel/Plastic/Vinyl Tile	40 to 60 g/ m ²
	Dried mortar/Wooden flooring (plywood, etc.)	60 to 100 g/ m ²

500mm



GA1651W

NEW



GA1652W

NEW



GA1654W

NEW



GA1655W

NEW



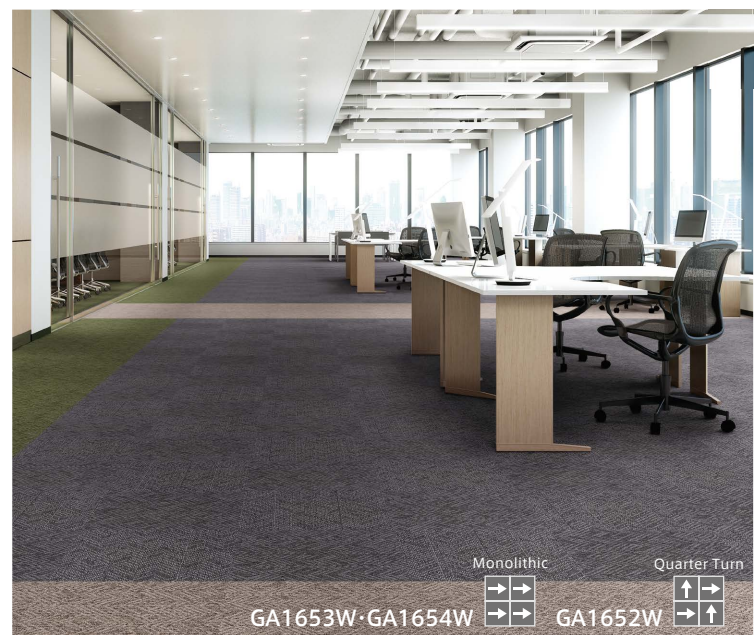
GA1653W

NEW

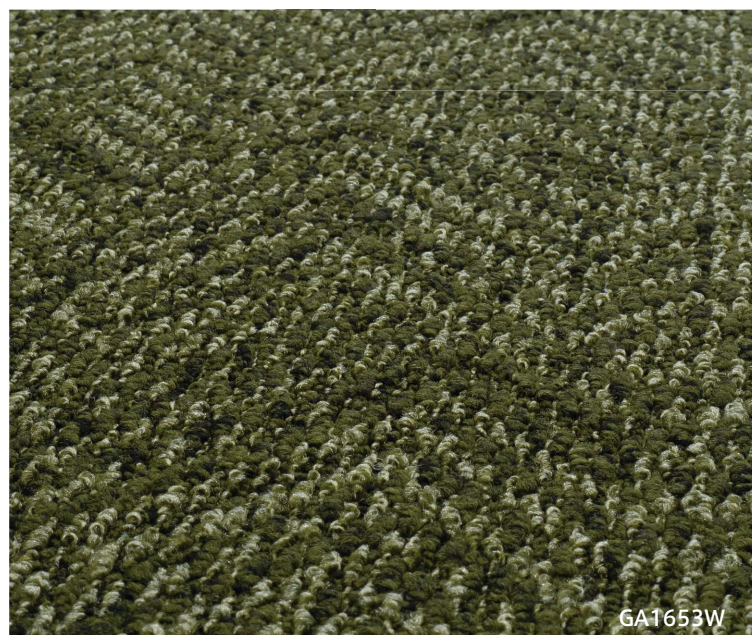
Sophisticated herringbone pattern with an authentic texture.
 Inspired by the woven fabric made by mixing various type of colored yarns.



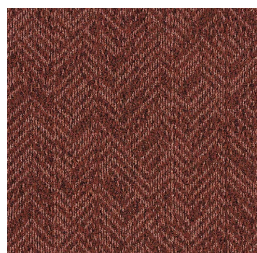
GA1651W · GA1656W   TTN3118 (Loose Lay Tile)



GA1653W · GA1654W  GA1652W 




GA1653W



GA1656W **NEW**

[GA-100W] SHADOW BLOCK



GA1957W · GA1962W · GA1963W  Monolithic

Composition

Pile BCF Nylon 100%
Backing PVC and Glass Fiber

Specification

Pile Height H4mm to L2.5mm
Textured Loop Pile
Overall Thickness 7mm
Size 500mm × 500mm
1/10 gauge, 11.5 stitches/inch
Package 20 pcs/box = 5m²/box

* Design registered
* Patent acquired for the dyeing technology that adds the design.

Flame-Retardant Performance Test No. E2120244
Antistatic property on human body: 1.0 kv or less (JIS L 1021-16 at 23°C, 25%RH, synthetic rubber sole)
Stain-Resistant / Stain-release using fluororesin

- The surface patterns do not connect. Please check how it looks by room scene images.
- Can be installed both monolithic and quarter turn. For monolithic installation, if the color difference and joints of each carpet tile stand out, replace the position of some tiles.
- In order to make the appearance after installation more natural, stripes are deliberately inserted in the original design at a certain rate. These stripes are not product defects, such as scratches due to weaving, etc. After installation, in case the stripes are connected and visually not acceptable, replace the position of some tiles.

<Made-to-Order>

For GA-100W standard colors, NANO CLEAN (special stain-release) finish is also available on a made-to-order basis.
*Please contact TOLI sales reps for further information.

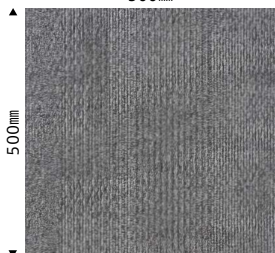


Monolithic Quarter Turn



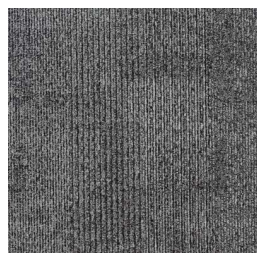
Way of Installation	Sub-floor	Required Qty of Adhesive
Installed with tackifier adhesive (ECO GA Cement)	Steel/Plastic/Vinyl Tile	40 to 60 g/ m ²
	Dried mortar/Wooden flooring (plywood, etc.)	60 to 100 g/ m ²

500mm



GA1969W

NEW



GA1970W

NEW

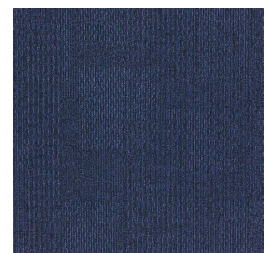


GA1971W

NEW



GA1960W

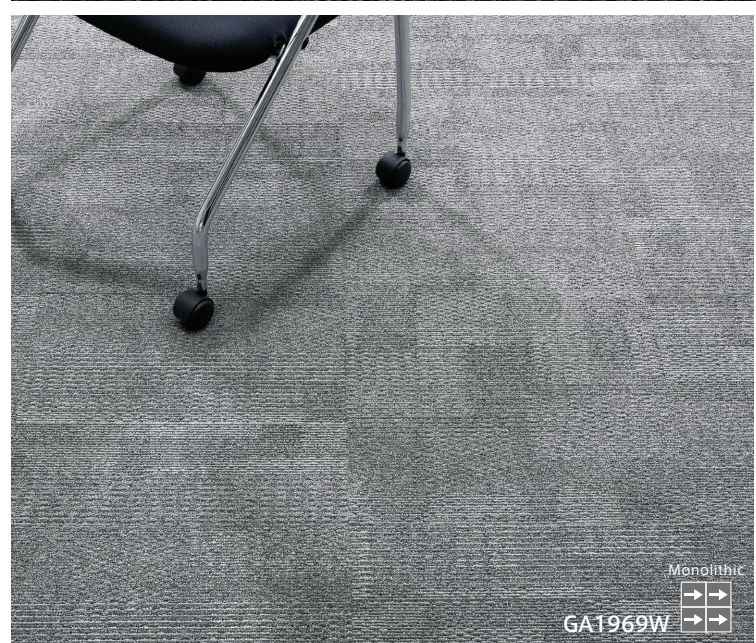


GA1961W

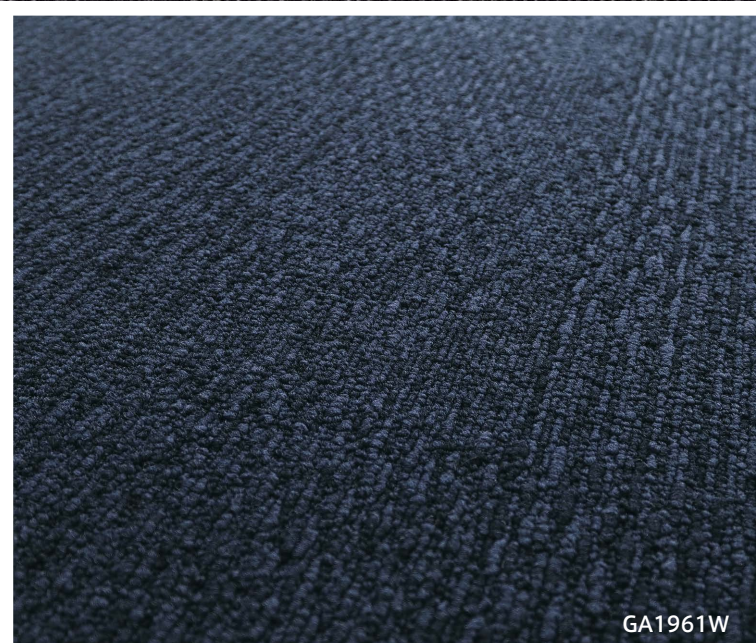
Random geometric design in soft texture can be coordinated with variety of interior products.



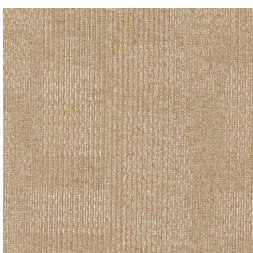
Monolithic
GA1971W



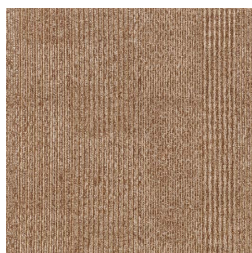
Monolithic
GA1969W



GA1961W



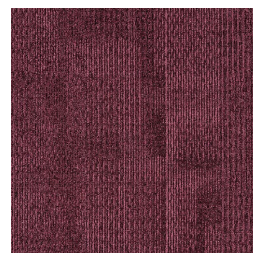
GA1962W



GA1963W



GA1957W



GA1972W

NEW

NEW

[GA-100W] SAND II



Monolithic



GA1853W · GA1854W

Composition

Pile BCF Nylon 100%
Backing PVC and Glass Fiber

Specification

Pile Height H4.5mm to L3mm
Multi-Level Loop Pile

Overall

Thickness 6.5mm

Size 500mm × 500mm

1/10 gauge, 10.0 stitches/inch

Package 20 pcs/box = 5m²/box

Flame-Retardant Performance Test No. E2200144

Antistatic property on human body: 1.0 kv or less (JIS L 1021-16 at 23°C, 25%RH, synthetic rubber sole)

Stain-Resistant / Stain-release using fluororesin

- The surface patterns do not connect. Please check how it looks by room scene images.
- Can be installed both monolithic and quarter turn. For monolithic installation, if the color difference and joints of each carpet tile stand out, replace the position of some tiles.
- In order to make the appearance after installation more natural, stripes are deliberately inserted in the original design at a certain rate. These stripes are not product defects, such as scratches due to weaving, etc. After installation, in case the stripes are connected and visually not acceptable, replace the position of some tiles.

<Made-to-Order>

For GA-100W standard colors, NANO CLEAN (special stain-release) finish is also available on a made-to-order basis.

*Please contact TOLI sales reps for further information.

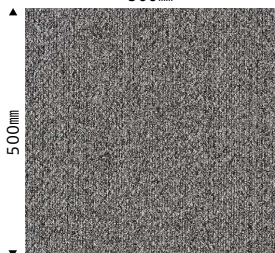


Monolithic Quarter Turn



Way of Installation	Sub-floor	Required Qty of Adhesive
Installed with tackifier adhesive (ECO GA Cement)	Steel/Plastic/Vinyl Tile	40 to 60 g/ m ²
	Dried mortar/Wooden flooring (plywood, etc.)	60 to 100 g/ m ²

500mm



GA1851W

NEW



GA1852W

NEW



GA1853W

NEW



GA1854W

NEW



GA1855W

NEW

Deep texture created by its amazing contrast of shiny yarns and black-colored yarns.
Beautiful plain-look carpet with rich loop piles.



Monolithic

GA1851W·GA1855W



Monolithic

GA1852W



GA1851W

NEW

[GA-100W] SILKY LINE II



GA1751W · GA1752W · GA1762W

Composition

Pile BCF Nylon 100%
Backing PVC and Glass Fiber

Specification

Pile Height H4mm to L3mm
High-Low Loop Pile

Overall

Thickness 6.5mm

Size 500mm×500mm

Package 1/10 gauge, 10.5 stitches/inch

20 pcs/box = 5m²/box

Flame-Retardant Performance Test No. E2200141

Antistatic property on human body: 1.0 kv or less (JIS L 1021-16 at 23°C, 25%RH, synthetic rubber sole)

Stain-Resistant / Stain-release using fluororesin

<Only GA1751W is finished with NANO CLEAN (special stain-release).>

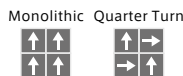
●The surface patterns do not connect. Please check how it looks by room scene images.

●Can be installed both monolithic and quarter turn. For monolithic installation, if the color difference and joints of each carpet tile stand out, replace the position of some tiles.

<Made-to-Order>

For GA-100W standard colors, NANO CLEAN (special stain-release) finish is also available on a made-to-order basis.

*Please contact TOLI sales reps for further information.



Way of Installation	Sub-floor	Required Qty of Adhesive
Installed with tackifier adhesive (ECO GA Cement)	Steel/Plastic/Vinyl Tile	40 to 60 g/ m ²
	Dried mortar/Wooden flooring (plywood, etc.)	60 to 100 g/ m ²

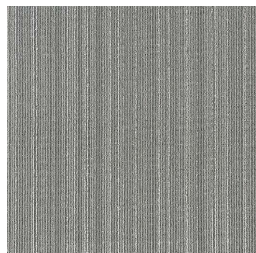
500mm



GA1751W

NEW

NANO CLEAN



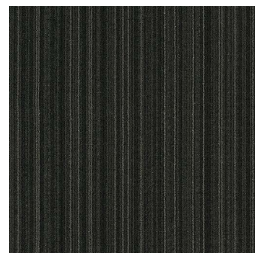
GA1752W

NEW



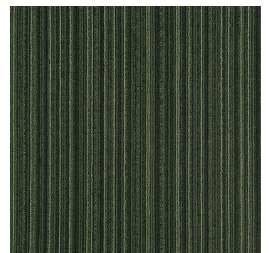
GA1753W

NEW



GA1754W

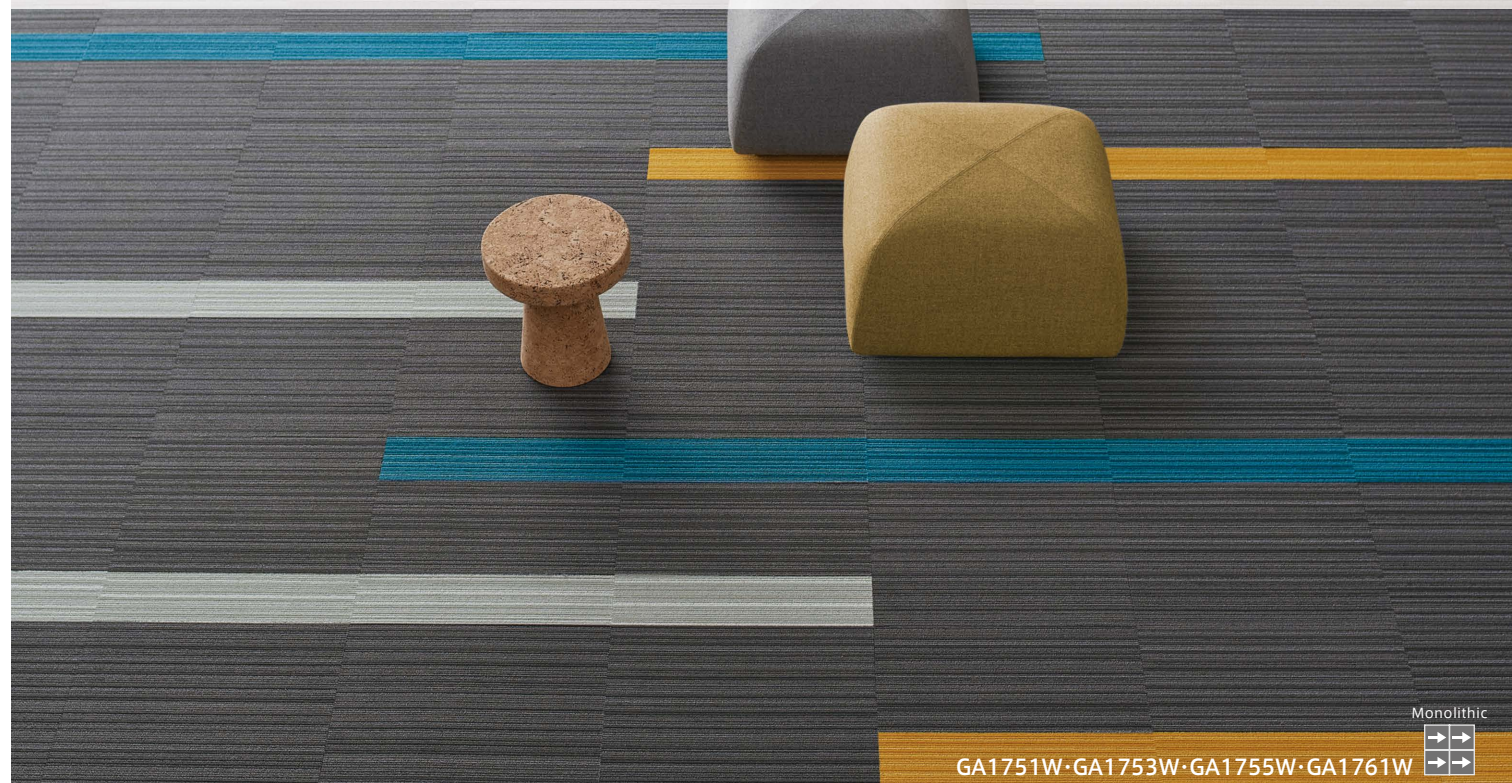
NEW



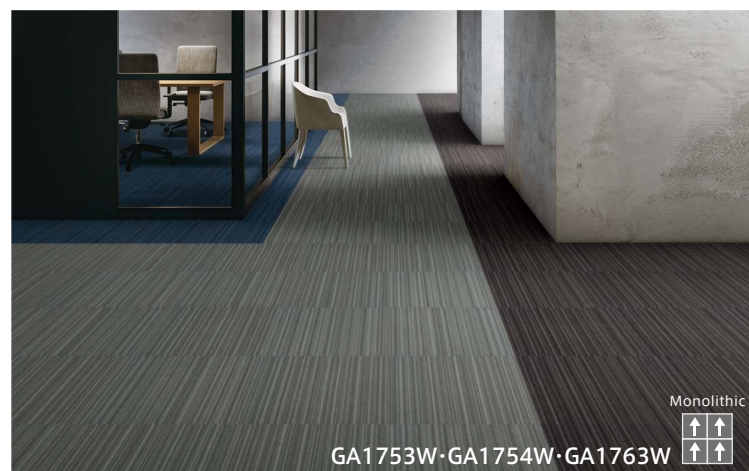
GA1764W

NEW

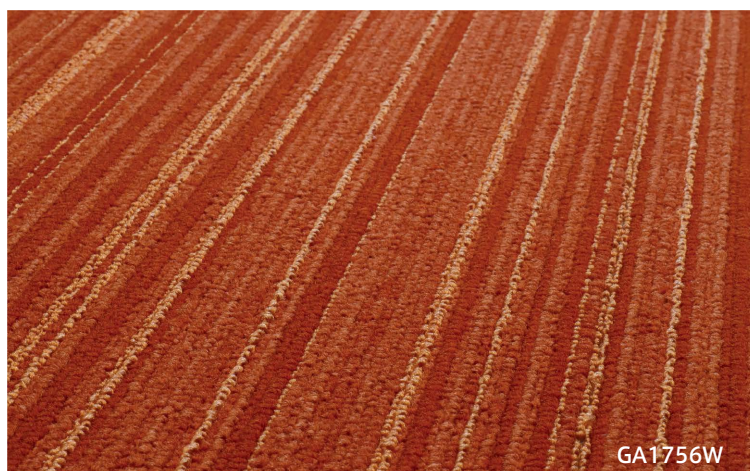
Classy modern-stripped pattern using silk-like shiny yarns.
 Characterized by its vivid and attractive color lineup.



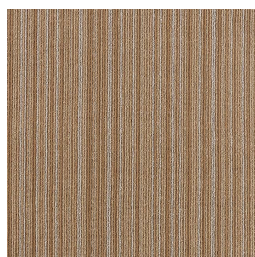
GA1751W · GA1753W · GA1755W · GA1761W



GA1753W · GA1754W · GA1763W

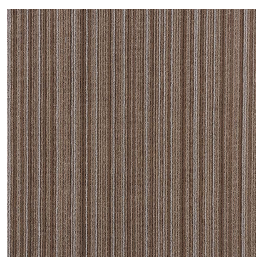


GA1756W



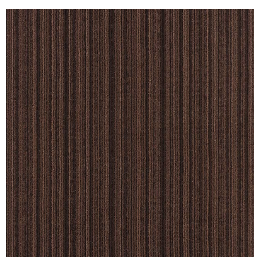
GA1757W

NEW



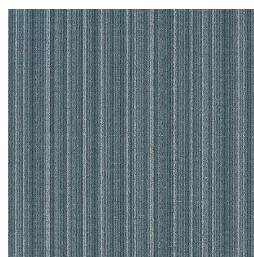
GA1758W

NEW



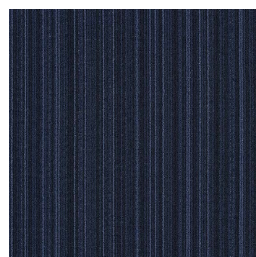
GA1759W

NEW



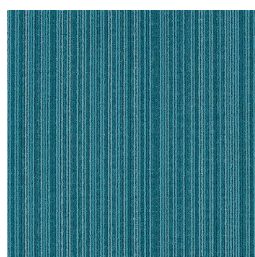
GA1762W

NEW



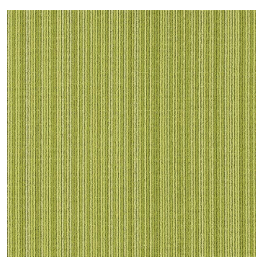
GA1763W

NEW



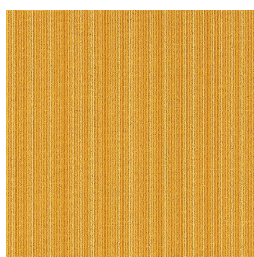
GA1761W

NEW



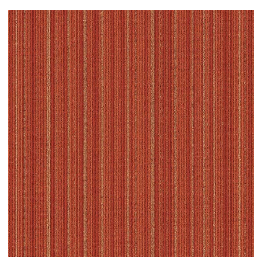
GA1760W

NEW



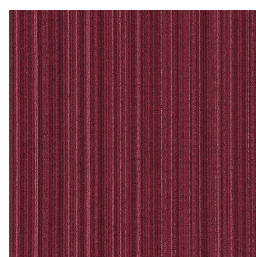
GA1755W

NEW



GA1756W

NEW



GA1765W

NEW

[GA-100W] RANDOM



Monolithic



GA1412W · GA1413W · GA1414W

Composition

Pile BCF Nylon 100%
Backing PVC and Glass Fiber

Specification

Pile Height H4mm to L3mm
High-Low Loop Pile

Overall

Thickness 6.5mm

Size 500mm × 500mm

1/10 gauge, 12.5 stitches/inch

Package 20 pcs/box = 5m²/box

Flame-Retardant Performance Test No. EO100077

Antistatic property on human body: 1.0 kv or less (JIS L 1021-16 at 23°C, 25%RH, synthetic rubber sole)

Stain-Resistant / Stain-release using fluororesin

● The surface patterns do not connect. Please check how it looks by room scene images.

● Can be installed both monolithic and quarter turn. For monolithic installation, if the color difference and joints of each carpet tile stand out, replace the position of some tiles.

<Made-to-Order>

For GA-100W standard colors, NANO CLEAN (special stain-release) finish is also available on a made-to-order basis.

*Please contact TOLI sales reps for further information.



F^{IC}☆☆☆☆☆
J10-30670

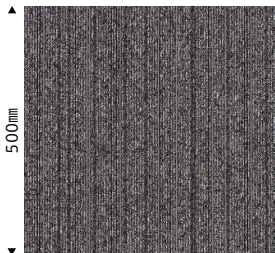


Monolithic Quarter Turn



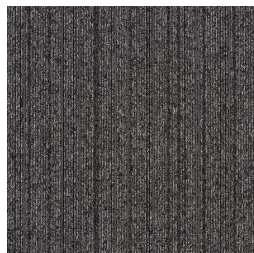
Way of Installation	Sub-floor	Required Qty of Adhesive
Installed with tackifier adhesive (ECO GA Cement)	Steel/Plastic/Vinyl Tile	40 to 60 g/ m ²
	Dried mortar/Wooden flooring (plywood, etc.)	60 to 100 g/ m ²

500mm



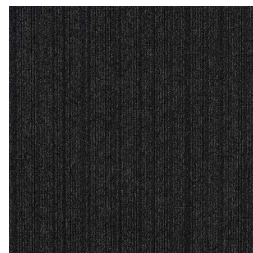
GA1414W

NEW



GA1412W

NEW



GA1413W

NEW

GA-100W (random) has a very impressive image where the stripes are melted in the base yarn with subtle color changes.



Monolithic
↑↑
↑↑
GA1412W



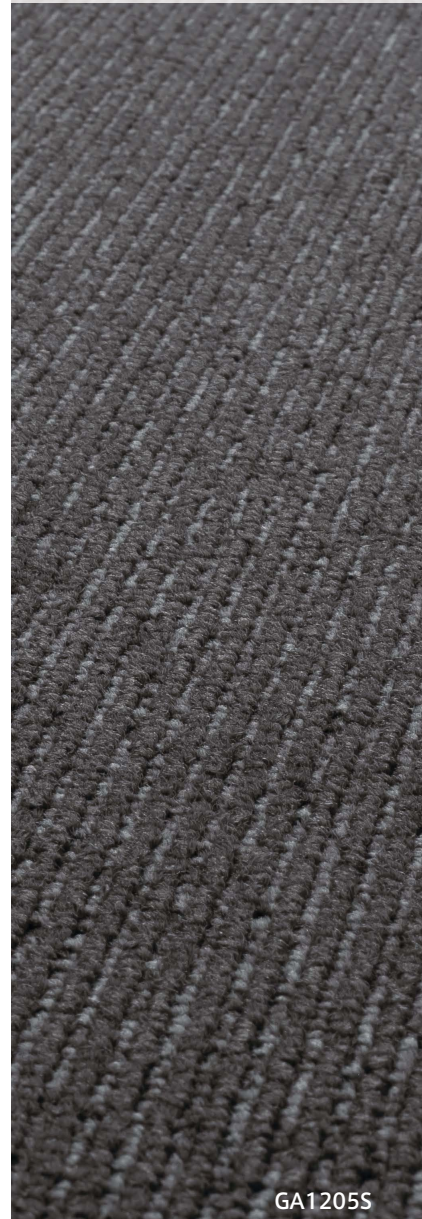
Monolithic
↑↑
↑↑
GA1413W-GA1414W



GA1414W

GA-100S

Modern striped pattern that enables various floor designs.



GA1207S-GA1021

GA1205S

Composition

Pile BCF Nylon 100%
Backing PVC and Glass Fiber

Specification

Pile Height H3.5mm to L3mm
High-Low Loop Pile

Overall

Thickness 6.5mm
Size 500mm×500mm
1/10 gauge, 13.0 stitches/inch

JIS Registered No. JIS L 4406 Carpet Tile
QT0508001 QT0408001

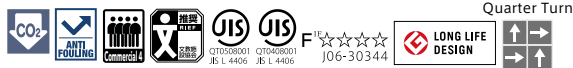
Package 20 pcs/box = 5m²/box

Flame-Retardant Performance Test No. E0080216
Antistatic property on human body: 1.0 kv or less (JIS L 1021-16 at 23°C, 25%RH, synthetic rubber sole)
Stain-Resistant / Stain-release using fluororesin

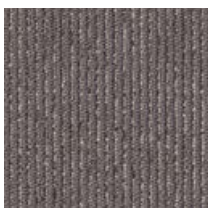
- Standard way of installation is Quarter Turn.
- Sometimes the crossover points of the joints may appear to be misaligned in stripe-pattern products.

<Made-to-Order>

For GA-100S standard colors, NANO CLEAN (special stain-release) finish is also available on a made-to-order basis.
*Please contact TOLI sales reps for further information.



Way of Installation	Sub-floor	Required Qty of Adhesive
Installed with tackifier adhesive (ECO GA Cement)	Steel/Plastic/Vinyl Tile	40 to 60 g/ m ²
	Dried mortar/Wooden flooring (plywood, etc.)	60 to 100 g/ m ²



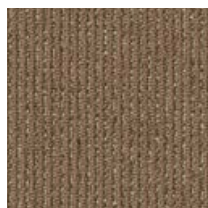
GA1205S



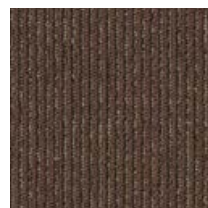
GA1206S



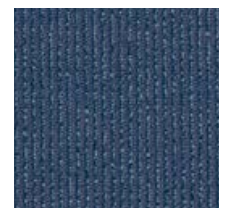
GA1207S
GAN1207S



GA1214S



NEW GA1215S



NEW GA1209S

GA-100

Iconic brand of carpet tile products with 38 years' history.
Reliable high quality based upon long-term experience.



Composition

Pile BCF Nylon 100%
Backing PVC and Glass Fiber

Specification

Pile Height 3.5mm
Loop Pile

Overall

Thickness 6.5mm

Size 500mm×500mm

1/10 gauge, 13.0 stitches/inch

JIS Registered No. JIS L 4406 Carpet Tile

QT0508001 QT0408001

Package 20 pcs/box = 5m²/box

Flame-Retardant Performance Test No. E0830367

Antistatic property on human body: 1.0 kv or less (JIS L 1021-16 at 23°C, 25%RH, synthetic rubber sole)

Stain-Resistant / Stain-release using fluororesin <Only GA1033 is finished with NANO CLEAN (special stain-release)>

●Standard way of installation is Quarter Turn.

<Made-to-Order>

For GA-100 standard colors, NANO CLEAN (special stain-release) finish is also available on a made-to-order basis.

*Please contact TOLI sales reps for further information.



Way of Installation	Sub-floor	Required Qty of Adhesive
Installed with tackifier adhesive (ECO GA Cement)	Steel/Plastic/Vinyl Tile	40 to 60 g/ m ²
	Dried mortar/Wooden flooring (plywood, etc.)	60 to 100 g/ m ²

Guide to product numbers other than regular GA-100

Self adhesive (GA-100N) GAN + Color Number (e.g. GAN194)	Ecomark-certified product (GA-100EM) GEM + Color Number (e.g. GEM194)	Super antistatic (GA-100SA) GSA + Color Number (e.g. GSA194)
---	--	---

The color codes of the product number of the above types listed under the color samples are always in stock.

For details, refer to p.25.

Ecomark-certified
GA-100EM

[Partly stocking colors]



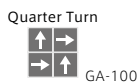
エコマーク認定商品
東リ株式会社



< Composition · Specification >

For base materials of GA-100.
Recycled PVC backing
Product Code is GEM + Color Number.
(e.g.) Ecomark-certified model for GA125 is GEM125.

Flame-Retardant Performance Test No. EO080063
Antistatic property on human body: 1.0 kv or less (JIS L 1021-16 at 23°C, 25%RH, synthetic rubber sole)
Stain-Resistant / Stain-release using fluororesin
●Please avoid installation at a room temperature of 5°C or less.
●Standard way of installation is Quarter Turn.

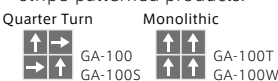


< Made-to-Order Colors >

Conditions:
Any standard color of GA-100, GA-100S, GA-100T, and GA-100W
Minimum Order Qty: 300m² per color
*Please note the overall thickness of GA-100T & GA-100W will be slightly thicker compared to the regular backing.

Production: Approx. 3 weeks
* The Flame-Retardant Performance Test No. and F☆☆☆☆ Certification No. vary by product type, so please inquire with us for details.

- Ecomark-certified products of GA-100T & GA-100W can be installed either monolithic or quarter turn.
- The standard way of installation for Ecomark-certified products of GA-100, GA-100S is Quarter Turn.
- Sometimes the crossover points of the joints may appear to be misaligned in stripe-patterned products.



Self-adhesive
GA-100N

[Partly stocking colors]



< Composition · Specification >

For base materials of GA-100 & GA-100S
Product Code is GAN + Color Number.
(e.g.) Self-adhesive model for GA125 is GAN125.

Flame-Retardant Performance Test No. EO970066
Antistatic property on human body: 1.0 kv or less (JIS L 1021-16 at 23°C, 25%RH, synthetic rubber sole)
Stain-Resistant / Stain-release using fluororesin
Installation/(No need to apply the adhesive on the sub-floor)

- No adhesive application and no waiting time will make installation time much shorter.
- Installation can be done with less physical efforts.
- Less waste because of no empty cans of adhesive.
- Standard way of installation is Quarter Turn.
- Because GAN1207S is stripe-patterned, sometimes the crossover points of the joints may appear to be misaligned.



< Made-to-Order Colors >

Conditions:
Any standard color of GA-100 and GA-100S
Minimum Order Qty: 300m² per color
(For more than 1000 m² of orders, please contact TOLI sales reps.)

* The Flame-Retardant Performance Test No. and F☆☆☆☆ Certification No. vary by product type, so please inquire with us for details.

■GA-100N does not require adhesive application on the sub-floor.



■GA-100N Sub-floor Application Table

Sub-floor		Suitability
Access Floor	Metallic or resin surface	○
	Concrete	×
Vinyl floor tiles/ Vinyl floor sheets		○
Stone		○
Linoleum		×

Sub-floor		Suitability
Mortar		×
Particle board		×
Carpet/Needle punch		×
Underlay sheet For carpet tiles		×
Floor heating		×
Wood flooring		△*

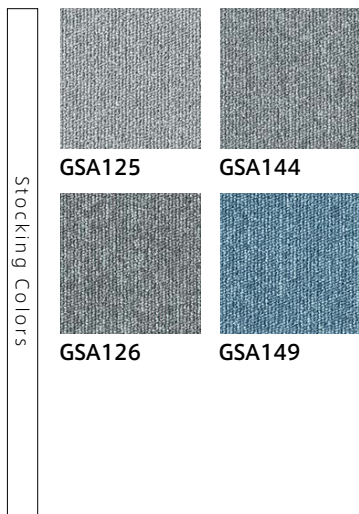
* The color and quality may change.
●The adhesive strength may weaken for some resins such as polypropylene or if the surface of the floor is excessively bumpy.

■GA-100N Application & Usage

- Suitable on the top of raised floors in the office, such as free access floors and OA floors made of metal or resin. However, please note the adhesive strength may weaken if the surface is extremely uneven. For more information please contact TOLI sales reps.
- Can also be installed on flat-surfaced vinyl floor tiles or vinyl floor sheets. In case you need to remove the carpet tiles afterwards, apply the wax sufficiently on the top of them before installation.
- Cannot be used in the places where heavy trolleys and carts frequently come and go.
- Cannot be used on the sub-floor that tends to become dusty such as mortar, nor the sub-floor that may extend or shrink such as floor heating.

Super antistatic GA-100SA

[Partly stocking colors]



< Composition · Specification >

For base materials of GA-100.
Product Code is GSA + Color Number.
(e.g.) The GA125 super antistatic model is GSA125.

Flame-Retardant Performance Test No. EO830368

Antistatic property on human body: 1.0 kv or less (JIS L 1021-16 at 23°C, 25%RH, synthetic rubber sole)

Excellent antistatic performance with pile fibers with conductive properties and conductive PVC backing.

Conditions: Antistatic property on human body JIS L 1021-16 (23°C, 25%RH)

Electrical resistance value JIS L 4406 (23°C, 25%RH)

Antistatic Items		Measured Value
Antistatic property on human body	Synthetic rubber sole	-0.4kv
	Leather sole	-1.2kv
Electrical resistance value (vertical)		$2.0 \times 10^7 \Omega$

Testing conducted by KE'KEN Textile Testing & Certification Center

Stain-Resistant / Stain-release using fluororesin

● Standard way of installation is QuarterTurn.



< Made-to-Order Colors >

For the following color number only
Minimum Order Qty: 300m² per color
GSA108 · GSA136 · GSA139 · GSA155 · GSA159
Production: Approx. 3 weeks

* The installation direction depends on each product.

* The Flame-Retardant Performance Test No. and F☆☆☆☆ Certification No. vary by product type, so please inquire with us for details.

Deodorant-finished GA-100AF

[Made-to-Order Products]

< Made-to-Order Colors >

Conditions:

Any standard color of GA-100 and GA-100S

Minimum Order Qty: 300m² per color

Production: Approx. 3 weeks

* The Flame-Retardant Performance Test No. and F☆☆☆☆ Certification No. vary by product type, so please inquire with us for details.

< Composition · Specification >

For base materials of GA-100 & GA-100S

Product Code is GAF + Color Number.

(e.g.) Deodorant-finished model for GA125 is GAF125.

Flame-Retardant Performance Test No. EO080124

Antistatic property on human body: 1.0 kv or less (JIS L 1021-16 at 23°C, 25%RH, synthetic rubber sole)

Stain-Resistant / Stain-release using fluororesin

● Standard way of installation is Quarter Turn.

● Sometimes the crossover points of the joints may appear to be misaligned in stripe-patterned products.

● There may be a slight color difference from the same color number of GA-100 & GA-100S with the regular specification.



Antibacterial-finished (for special-purpose)

GA-100FH

[Made-to-Order Products]

< Made-to-Order Colors >

Conditions:

Any standard color of GA-100 and GA-100S

Minimum Order Qty: 300m² per color

Production: Approx. 3 weeks

* The Flame-Retardant Performance Test No. and F☆☆☆☆ Certification No. vary by product type, so please inquire with us for details.

< Composition · Specification >

For base materials of GA-100 & GA-100S

Product Code is GFH + Color Number.

(e.g.) Antibacterial-finished model for GA125 is GFH125.

Flame-Retardant Performance Test No. EO050250

Antistatic property on human body: 1.0 kv or less (JIS L 1021-16 at 23°C, 25%RH, synthetic rubber sole)

Stain-Resistant / Stain-release using fluororesin Antibacterial performance: SEK Antibacterial finished

[SEK Red Mark]

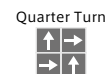
Meets the SEK Special-purpose Standards (for medical institutions, etc.)

Japan Textile Evaluation Technology Council (JETEC) Certification No. 027SD07

● Standard way of installation is Quarter Turn.

● Sometimes the crossover points of the joints may appear to be misaligned in stripe-patterned products.

● There may be a slight color difference from the same color number of GA-100 & GA-100S with the regular specification.



■ Common way of installation for GA-100EM · GA-100SA · GA-100AF · GA-100FH

Way of Installation	Sub-floor	Required Qty of Adhesive
Installed with tackifier adhesive (ECO GA Cement)	Steel / Plastic / Vinyl Tile	40 to 60 g/m ²
	Dried mortar / Wooden flooring (plywood, etc.)	60 to 100g/m ²

GA-100T·GA-100W Soft Back Plus [Made-to-Order Products]



Excellent walking-feel (reduces leg fatigue), shock absorption, and sound insulation are the three excellent characteristics of this product.

○ ——— Backing (Polyester Felt)

	Underfoot feel		Acoustic characteristic	Shock absorption*3	
	Sensory value *1			G value	m/S ²
	With socks	With shoes	Δ L grade *2		
GA-100W (Soft Back Plus)	5.3	5.1	Δ LL(I)-3	98	960
GA-100W (Product with PVC backing)	4.5	4.4	Δ LL(I)-2	120	1176

- * 1 A larger numerical value in the test results indicates a higher ability to reduce leg fatigue and a more comfortable underfoot feeling.
- * 2 The higher the grade number, the higher the floor impact sound reduction performance.
- * 3 A smaller maximum acceleration value, which is an index of shock absorption, indicates a smaller shock and better shock absorption.
- * All data is from in-house tests unless otherwise specified. The values are test values, not guaranteed values.

TOLI Carpet Tile Soft Back Plus [Made-to-Order Products]

< Made-to-Order Colors > ———

Conditions:

Any standard color of GA-100T and GA-100W

Minimum Order Qty: 300m² per color

Production: Approx. 1 and half a week

< Composition · Specification > ———

Total thickness of each Product Code + 3.5mm

Product Code is Color Number + FB.

(e.g.) The GA10711T Soft Back Plus model is GA10711T-FB.

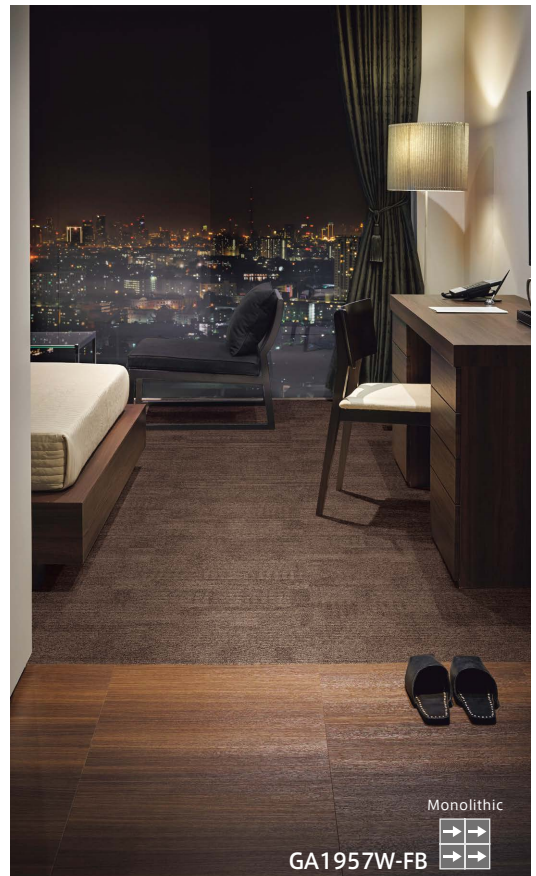
* The Flame-Retardant Performance Test No. and F¹☆☆☆☆ Certification No. vary by product type, so please inquire with us for details.



Way of Installation	Sub-floor	Required Qty of Adhesive
Installed with tackifier adhesive (ECO GA Cement)	Steel / Plastic / Vinyl Tile	60 to 90g/m ² *4
	Dried mortar / Wooden flooring (plywood, etc.)	90 to 150g/m ² *4

* 4 As a guideline, the amount of adhesive applied is about 1.5 times that of general carpet tile with PVC backing.

- When placing heavy objects such as furniture, dent marks will remain, so be sure to distribute the load with a floorboard, etc.
- **Cannot be used on underlay sheet for carpet tiles.**



Monolithic

GA1957W-FB



SG Carpet

For visually impaired people (JIS T 9251 compliant)

SG Carpet [Made-to-Order Product]

<Glass-fiber reinforced nylon resin protrusion 300 mm x 300 mm>

<Glass-fiber reinforced nylon resin protrusion 500 mm x 500 mm>

<Stainless-steel dot-shaped protrusion 300 mm x 300 mm>

<Stainless-steel linear-shaped protrusion 300 mm x 300 mm>

Made-to-Order Product Conditions Minimum Order Qty: 2m² per color & pattern
(Orders should be placed on a m² basis.)

Production Approx. 2 weeks after the order (For more than 25m², please contact TOLI sales rep in advance.)

* If you need to change the base material, please contact TOLI sales rep.

Composition

Base Material	GA-100/GA-100S
Pile	BCF Nylon 100%
Base Fabric	Nonwoven Polyester
Backing	PVC and Glass Fiber
Protruding part	KSGT1 to KSGT3, KSGS1 to KSGS3/Glass-fiber reinforced nylon resin KSGTS & KSGSS/Stainless steel

Specification

Size	<300 mm x 300 mm> Number of dot-shaped protrusions: 25 (5 x 5) Number of linear-shaped protrusions: 4 <500 mm x 500 mm> (Glass-fiber reinforced nylon resin protrusions only) Number of dot-shaped protrusions: 81 (9 x 9) Number of linear-shaped protrusions: 6 * For 500 mm x 500 mm size, linear-shaped protrusions can be also reduced to 4. For more information, please contact TOLI sales rep.
------	---

Overall Thickness 11.5 mm

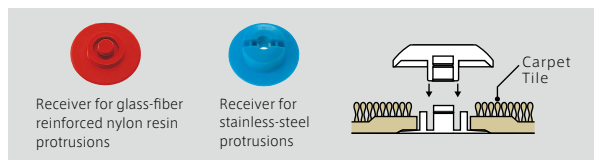
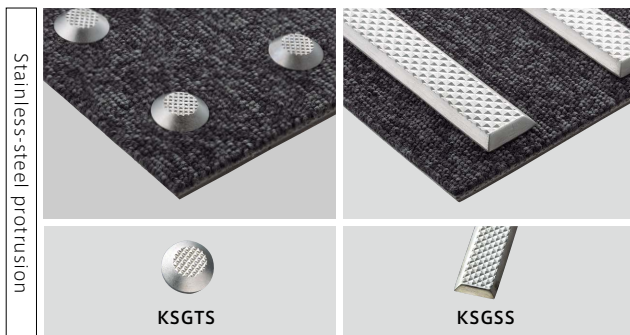
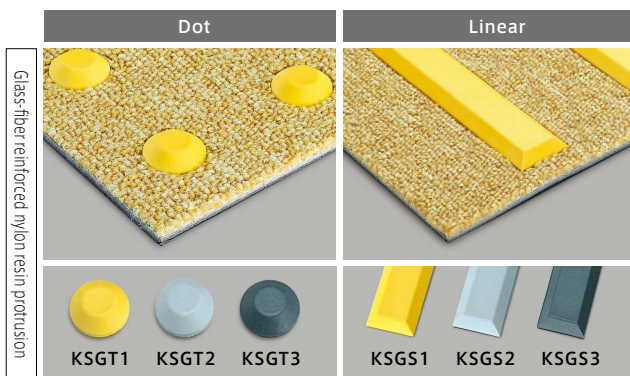
Protruding part 5 mm

Packaging <300 mm x 300 mm> 8 pcs/box = 0.72 m²/box
<500 mm x 500 mm> 8 pcs/box = 2 m²/box

Flame-Retardant Performance Test No. EO020135

Antistatic property on human body: 1.0 kv or less
(JIS L 1021-16 at 23°C, 25%RH, synthetic rubber sole)

Stain-Resistant / Stain-release using fluororesin



List of functionality marks

ANTI FOULING mark



Indicates the product's stain release performance. This product hardly gets dirty, and any stains can be easily removed by cleaning and maintenance. Daily maintenance is the most effective way to keep the product looking beautiful. Please take care to maintain the product on a regular basis.

NANO CLEAN mark



NANO CLEAN is more advanced stain release finish based on TOLI Corporation's own technology using fluororesin. In addition to the existing stain release finish using fluororesin, special Nano finish shows even more superior stain release performance to dirt and sand brought inside.

Antibacterial finish mark



This certification mark is only given to the products that conform to the regulations of the Japan Textile Technology Council (JTETC). The product has also passed the MRSA antibacterial performance test for (special purpose) products to be used at medical institutions, nursing homes, and other equivalent facilities. The rules and regulations set strict standards for the antibacterial performance against germs, and the effect on the human body.

Low Carbon Product mark



TOLI Corporation has certified this product as contributing to the realization of a low carbon society.

Walking mark

The durability of each product is ranked according to the product specification and the test results of durability to indentation, static load, and abrasion.



Commercial 4

Suitable for the areas where there is a heavy traffic of people, trolleys and other heavy objects, such as airports, department stores, shops, offices, schools, hospitals, hall and building lobbies, entrance halls and corridors.



Commercial 3

Suitable for the areas where there is a medium-level traffic of people, such as offices, schools, hospital offices and hotel banquet halls.

RIEF mark



Indicates the product is recognized as a recommended product provided for use in school facilities that meets the quality performance standards required for education use by the Research Institute of Educational Facilities.

JIS mark



Certifies by the nationally-registered certification body that the product meets the Japanese Industrial Standards (JIS).

Ecomark



This product is recognized as contributing to environmental preservation and minimizing the environmental load through its entire life cycle, from "production" to "disposal".

F☆☆☆☆ mark



Certification mark based on the independent standards for formaldehyde (VOC) radiation, organized by the Interior-fabrics Performance Evaluation Conference.

F^{IE}☆☆☆☆ is the highest classification.

Good Design Award mark



This product has been awarded the Long Life Design Award by the Japan Institute of Design Promotion (JDP).



GA-100 series Image collection



CONTENTS



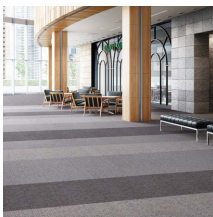
OFFICE
p.31 – 34



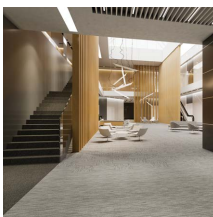
Carpet Tile + Loose Lay Tile
p.35 – 36



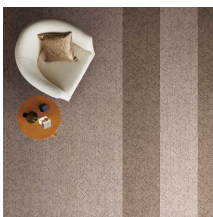
HOTEL
p.37 – 40



SHOP
p.41 – 44



SCHOOL / PUBLIC
p.45 – 48



RESIDENTIAL
p.49 – 50

OFFICE

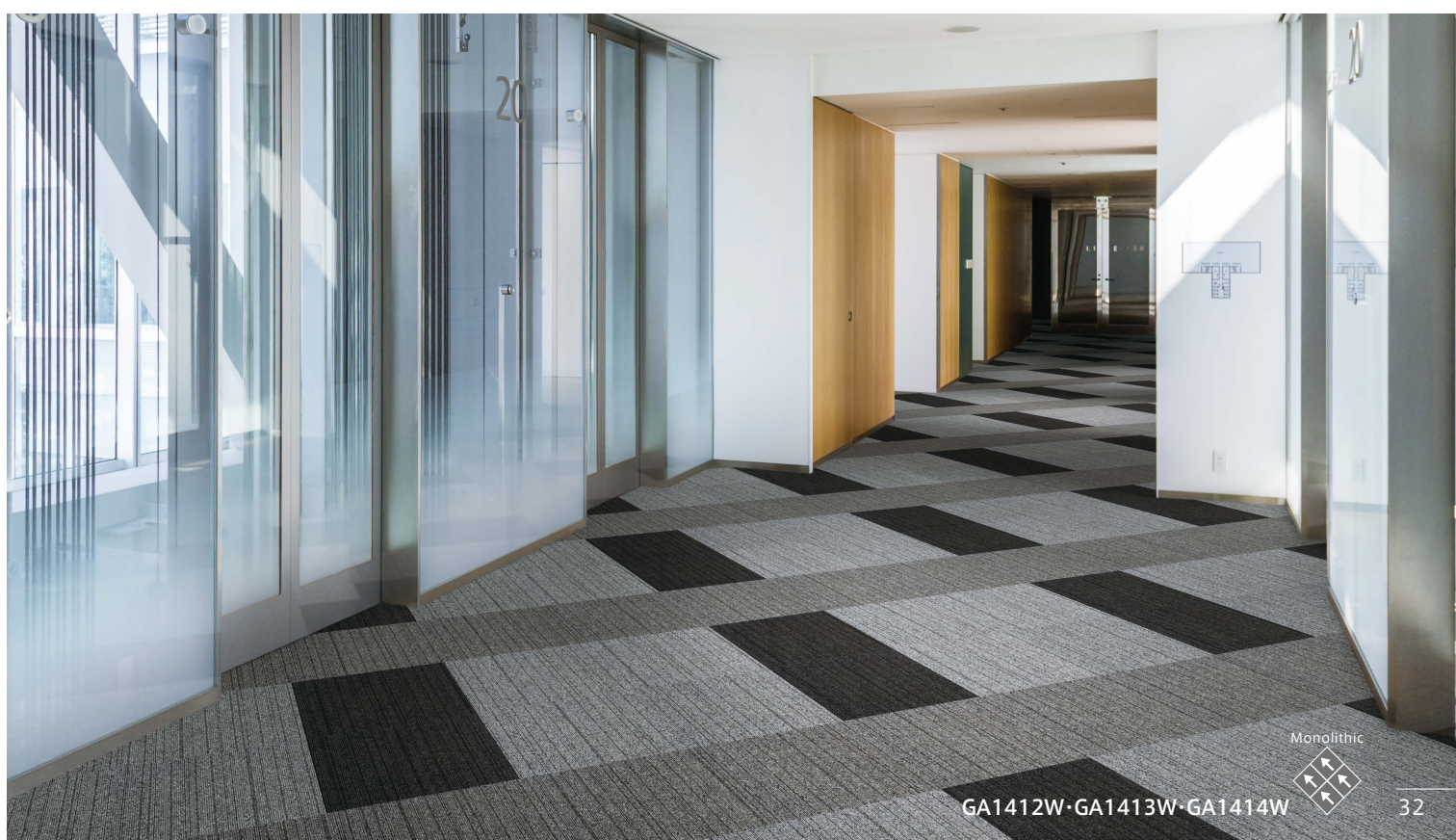




Monolithic



GA1654W · GA1656W · GA10719T



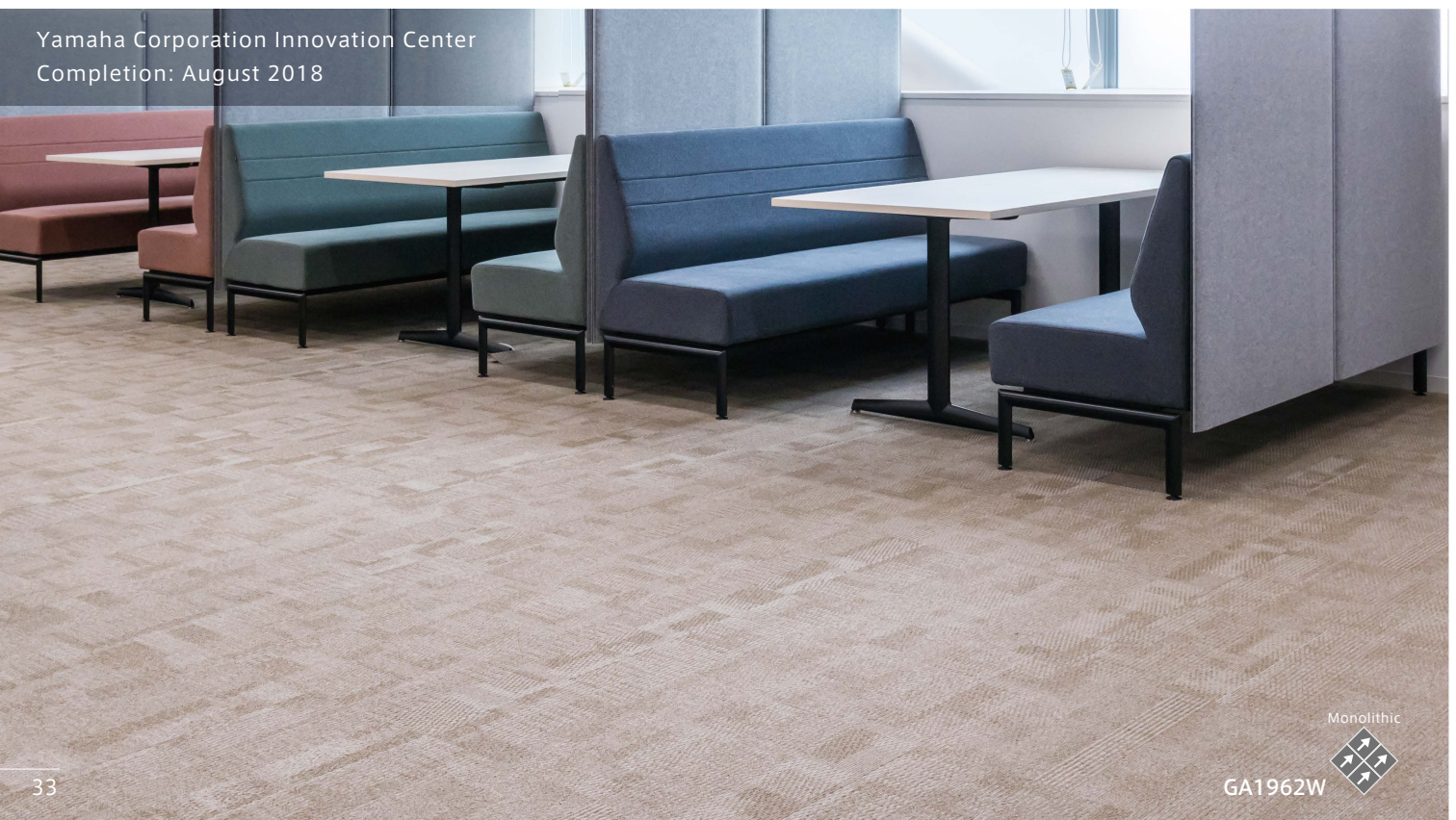
Monolithic



GA1412W · GA1413W · GA1414W



GA10714T·GA10715T·GA10716T



Yamaha Corporation Innovation Center
Completion: August 2018

GA1962W





Monolithic



GA10634T · GA10636T



Monolithic



GA1752W · GA1762W · GA1763W

Carpet Tile + Loose Lay Tile



Monolithic
GA1761W·GA10715T

Ashlar
TTN3601 (Loose Lay Tile)

Loose lay tiles designed to be installed together



Loose Lay Tile LL Free 50NW-EX and LL Free 40NW-EX have both won the Good Design Award.



① Can be installed with tackifier

Both GA Series and Loose Lay Tile (NW-EX Series) can be installed with the same tackifier adhesive. Because of that, the tiles can be easily replaced.



② Same-sized Module

Due to the same-sized module, both products can be installed together. The surface of carpet has been designed to be a little thick because your feet sink into the pile when you step on it.



③ Same Way of Maintenance

Loose Lay Tiles of NW-EX Series do not need any wax application, so they can be cleaned along with the carpet using a vacuum cleaner. (For the maintenance method of Loose Lay Tiles, refer to the Loose Lay Tile sample book or the general catalog.)



* NW-EX Series repels wax liquids. Please do not use any wax coating for maintenance.





Quarter Turn



GA1972W

Monolithic



TTN3303 (Loose Lay Tile)



Monolithic



GA1651W·GA1755W

Ashlar



TTN3115 (Loose Lay Tile)

HOTEL





Quarter Turn ↑ →
 GA1652W → ↑

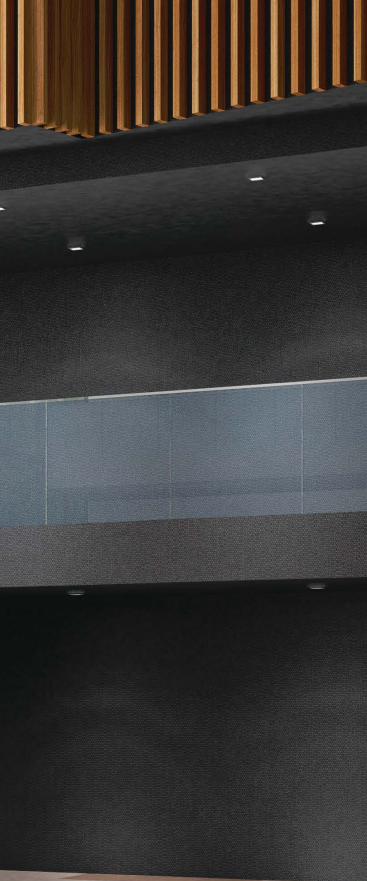
Monolithic ↑ ↑
 GA1854W ↑ ↑



Monolithic ↑ ↑
 GA10719T ↑ ↑

Ashlar → →
 TTN3125 (Loose Lay Tile) → →





Monolithic
GA10333T



Ashlar
TTN3128 (Loose Lay Tile)



GA1853W
GA1854W
GA10226T



GA10711T · GA10712T



SHOP





Monolithic

GA1853W · GA10717T



Monolithic

GA1957W · GA1963W · GA10716T





GA1755W · GA1756W · GA1765W · GA1957W · GA1962W · GA1963W

Monolithic



GA10232T · GA10234T

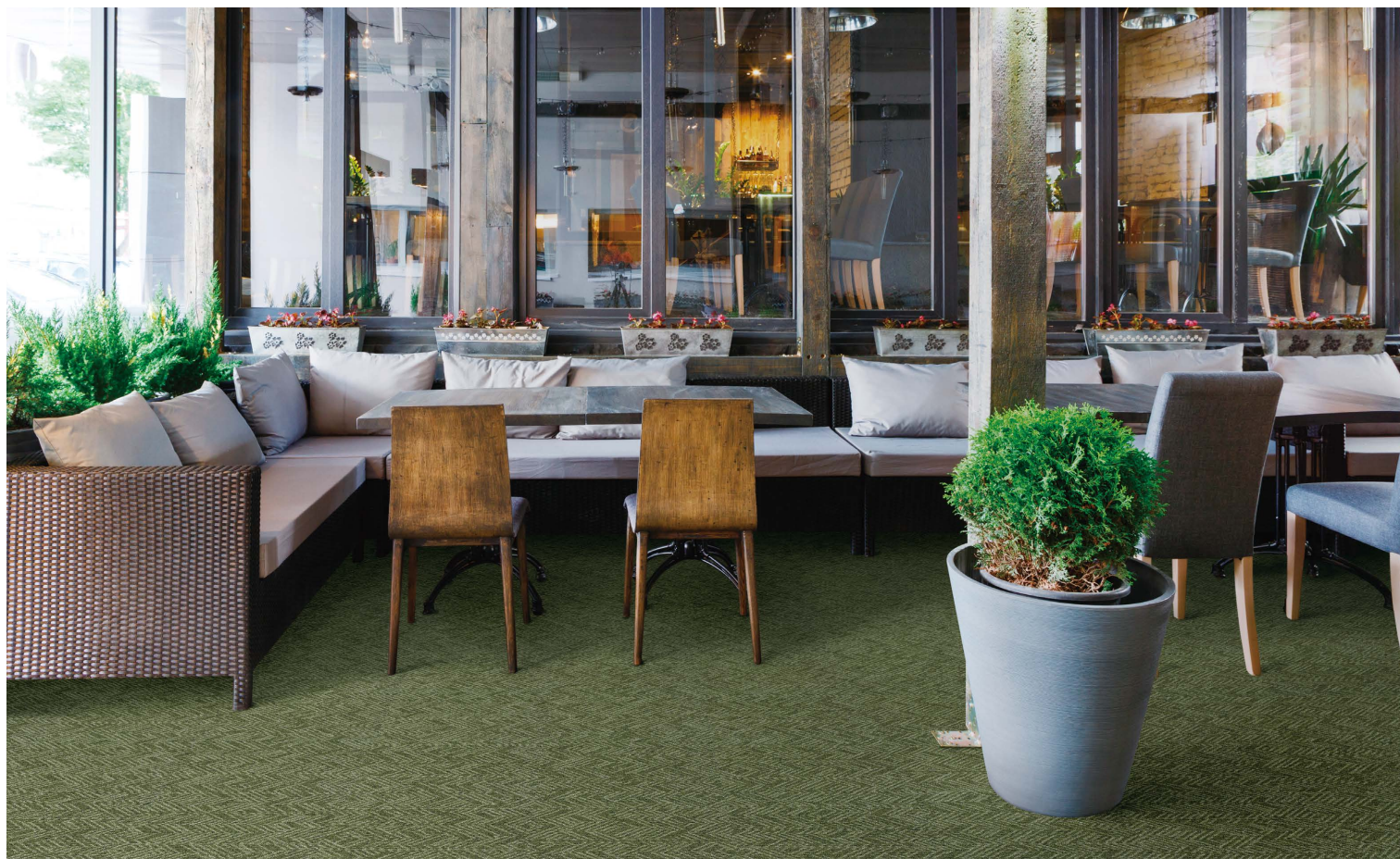
Monolithic







GA1760W · GA1761W · GA1851W · GA10718T

Monolithic

GA1653W  Monolithic

TTN3122 (Loose Lay Tile)  Ashlar

44

SCHOOL / PUBLIC





Monolithic Monolithic



GA1413W·GA1414W·TTN3205 (Loose Lay Tile)



Monolithic



GA10711T·GA10714T·GA10716T·GA10718T

SCHOOL / PUBLIC



Quarter Turn



GA190 · GA196 · GA1021 · GA1025 · GA1028



Monolithic



GA1751W · GA1760W · GA1761W





RESIDENTIAL



Monolithic
GA1654W-GA1655W



Monolithic
GA10711T





Monolithic
GA10632T



Monolithic
GA1853W · GA1855W





TOLI Corporation - Global Department

2-10-4 Higashi-Shinbashi Minato-ku Tokyo
105-0021 Japan
Phone : +81-3-5403-2078
Fax : +81-3-5472-6307
<http://toli-overseas.com/>

TOLI Corporation Singapore Branch

1 Coleman Street #05-02 (Unit1), The Adelphi,
Singapore 179803
Phone : +65-3138-5052
Fax : +65-6491-5234
<http://toli-overseas.com/>

TOLI (SHANGHAI) Corporation

Room 314, Building 1, No.55 Yuyao Rd., Jingan,
Shanghai 200040 China
Phone : +86-21-6071-0688
Fax : +86-21-6071-0560
<http://cn.toli-overseas.com/>



**TOLI Corporation is certified
to ISO9001**



**TOLI Corporation is certified
according to ISO14001
for carpet production.**

<http://toli-overseas.com/>

Please visit our website to see E-catalogue and Library where the images can be picked up.

Notes on selection

- In the case of light-colored carpet, dirt tends to be more outstanding. When selecting carpet, please use adequate consideration on the color as well.
- Please avoid using in locations where moisture is expected to rise constantly from the sub-floor. Otherwise adhesion failure and bad smell could be incurred.

! In the case of concrete-type sub-floor, in case there is excess alkaline water, there have been cases where the plasticizer contained within the PVC resin dissolves and an unpleasant (alcohol-type) odor is emitted. Before installation, be sure to check the moisture of the sub-floor, and if it is higher, dry out the sub-floor sufficiently. For more information please contact TOLI sales reps.

- In some cases, there might be slight color difference between actual products and color swatches or images on the catalogue.
- This catalog is based on the information as of June 2020. It may be changed without prior notice.

Notes on installation

- To ensure the stickiness of TOLI ECO GA Cement, begin installation only after you have applied the adhesive and it has become semi-transparent. After it has become semi-transparent, be careful not to lay the carpet tiles too closely together.

Notes on maintenance and use

! To maintain the beauty of the carpet and to protect from the dust, depending on the volume of foot traffic, carry out a daily maintenance with an electric cleaner or vacuum cleaner. In work spaces, in addition to daily maintenance, intensive cleaning on a regular basis is recommended, depending on the usage.

- When you use a vacuum cleaner with a brush, please be careful not to damage the surface piles.
- If dirt adheres to the carpet, please wipe it up immediately before it spreads. As time passes, the dirt will become more difficult to remove. Please also bear in mind that some type of contaminants may not be able to be removed.
- When you remove spots or localized stains, depending on the source of the stain, use a suitable stain remover or a neutral detergent, etc. Incorrect selection of a stain remover or detergent may incur even more discoloration.
- The use of chemicals or detergents with strong action, or liquids such as bleach, may incur discoloration or loss of color, or deterioration of the carpet itself. Please be sure not to spill such liquids.
- Rubber products such as the rubber legs of certain types of furniture and rubber mats, as well as paint, preservatives or insecticides may stain the carpet and incur discoloration or loss of color. Please do not let such things touch the carpet directly.
- Using in certain environments, such as environments exposed to direct sunlight, may incur discoloration or loss of color. Please block out the sunlight using a curtain or blind, etc.
- There are material-specific odors. Please carry out ventilation dedicatedly.
- There may be indentation caused by the localized load, such as high heels or furniture. Please use adequate caution, especially when installing on access floor which has large gaps.