

GA

TOLI CARPET TILE  
GRAND ART

# GA-3600 SUSTIVE BACK



TOLI Environment-Friendly Carpet Tile Backing

# SUSTIVE BACK

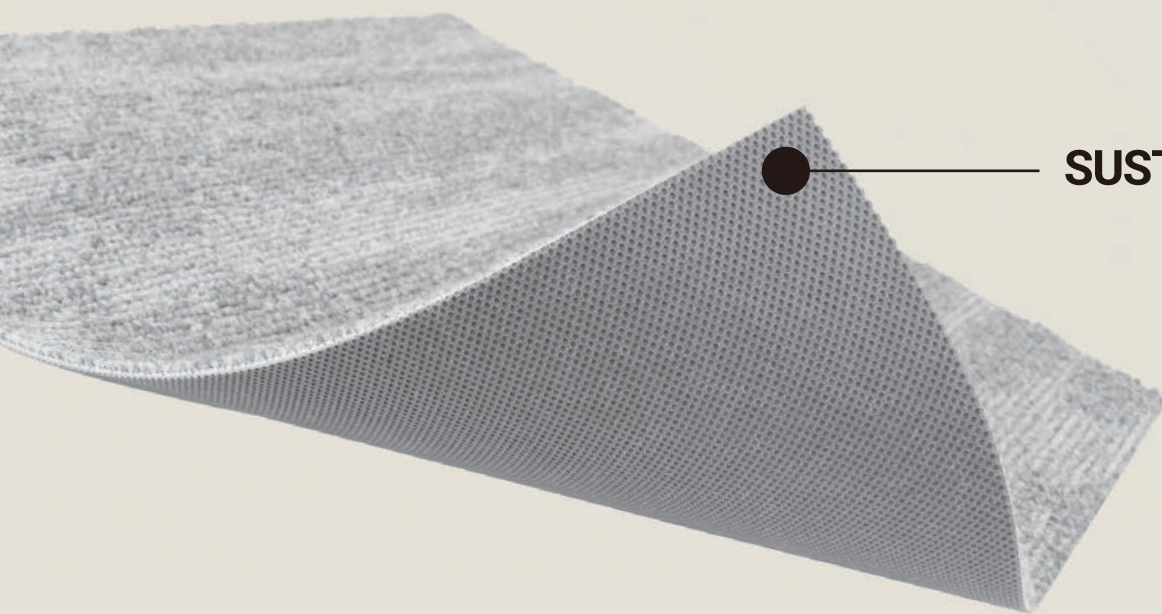
「サスティブバック®」



SUSTIVE BACK is the exclusive name for our carpet tile backing which includes recycled chips for TOLI's environment-friendly carpet tiles.

Recycling of carpet tile waste materials will contribute to the reduction of industrial waste emissions.

In addition to aiming for zero emissions within the TOLI Group (carpet tile production plant), we will work to expand the recycling of used carpet tiles from the market in the future.



**SUSTIVE BACK**

Reduction of CO2 emission per year <sup>(※1)</sup>

**9,000** tons/year

(※1) Compared to GA-3600 with PVC backing without recycled content.

## TOLI Group's Environmental Initiatives

Recognizing global environmental protection as a common and important issue for all mankind, we will strive to reduce environmental impact in our business activities and aim to contribute to a sustainable society.

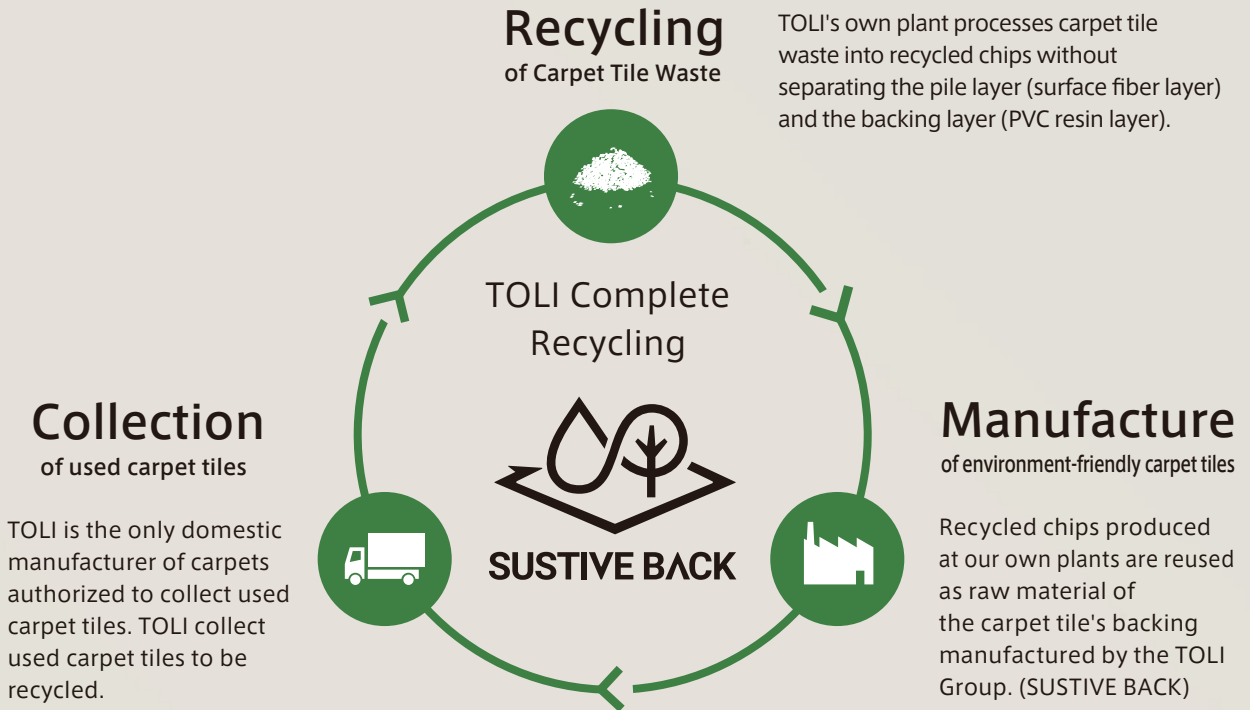
### SDGs as preferential efforts

- Reduction of Industrial Waste, Resource Conservation, and Promotion of Recycling
- Promote reduction of greenhouse gas emissions and energy saving
- Corporate activities that give consideration to safety and security



# TOLI Complete Recycling

TOLI will contribute to realize sustainable society by promoting "TOLI Complete Recycling".



## GA-3600 SUSTIVE BACK



Weight ratio of recycled materials: **43%**

	(※1) ECO LEAF method	(※2) In-house Calculation
CO2 Emissions	13.6 kg-CO <sub>2</sub> /m <sup>2</sup>	10.1 kg-CO <sub>2</sub> /m <sup>2</sup>
CO2 Emission Reduction Ratio (※3)	36%	41%

TOLI is the only domestic manufacturer of carpets authorized to collect used carpet tiles. TOLI collect used carpet tiles to be recycled.

(※1) Calculated based on the ECO LEAF Environmental-Label Program. Calculated using the data of the materials registered in IDEAV2.1.3 used in the program.

(※2) Calculated based on in-house calculation standards. Calculations are based on data of materials actually used.

(※3) Compared to GA-3600 conventional products (PVC backing)

## ● Environmental Labeling GA-3600 SUSTIVE BACK has obtained the following four environmental labels.

### Green Purchasing Law-compliant product



Products in which the total weight of unused fiber, recycled fiber, recycled plastic and other recycled materials is at least 25% by weight of the entire product.

### Green Label Plus



This certification system for the indoor air environment of carpet products was established by 'CRI', Carpet & Rug Institution in USA.

### Eco Mark



This product has been recognized as useful for environmental preservation because of its low environmental impact throughout its entire life cycle, from "production" to "disposal."

### ECO LEAF



The ECO-LEAF Declaration (Label) verifies and discloses quantitative environmental impact data of products obtained through LCA (Life Cycle Assessment = Environmental impact assessment over the lifetime of a product from resource extraction to manufacturing, assembly, distribution, use, disposal and recycling).

# Initiatives for Sustainable Carpet Tiles



## Recycling of carpet tiles

Recycling volume of carpet tile waste:

**2,300** tons/year



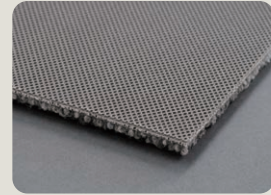
waste material

Percentage of Carpet-Tile Waste Reused

**100%**



recycled



new product



TOLI has introduced the Carpet Tile Recycling Plant in Shiga TOLI, which is the main production base for carpets, and processes the pile layer (surface fiber layer) and the backing layer (PVC resin layer) of carpet tiles into recycled chips without separating them.

Through this recycling technology, all carpet tile waste is processed into recycled chips and reused as part of the backing layer of carpet tiles, thereby contributing to the improvement of the recycling rate and the reduction of industrial waste emissions.



## Collection of used carpet tiles



TOLI has been working since 2000 to collect used carpet tiles.

In 2013, the company obtained certification under the wide-area certification system, and became the only approved domestic carpet tile manufacturer to collect used carpet tiles.

Collected carpet tiles are processed into recycled chips and reused for carpet tile backing.



## Initiatives for in-house production of raw yarn used in carpet tiles

TOLI will promote in-house production of raw yarn used in carpet tiles to ensure a stable supply of carpet tiles and to control CO2 emissions.

### ● Stable supply of carpet tiles

We aim to provide a stable supply of carpet tiles by introducing in-house production of nylon yarn to be used in carpet tiles.

### ● Reducing CO2 Emissions from Transportation

At our carpet tile production plant, we will undertake an integrated process from production of nylon yarn to production of carpet tile, eventually to reduce CO2 emissions by transportation.

## Longer life usage (maintenance of aesthetics)

### Stain-resistance

Stain-resistance with excellent water-and-oil repellency

GA-3600 SUSTIVE BACK, which uses highly durable solution-dyed nylon, is finished with stain-resistant treatment to have excellent water & oil repellent performance. If watery or oily stains are wiped away promptly, there will be no remaining stains.

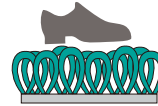


### Durability

Excellent durability with sufficient pile density

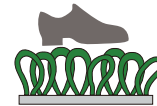
GA-3600 SUSTIVE BACK passes the required pile weight (surface yarn weight) of 350g/m<sup>2</sup> or more according to the Standard Specification for Public Construction Works Class 1. This represents high durability.

#### Class 1 products



With sufficient yarn weight, piles will not be crushed easily.

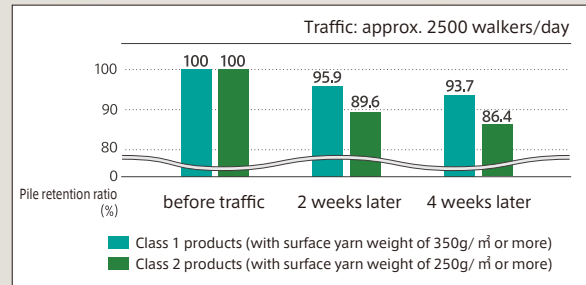
#### Class 2 products



With insufficient yarn weight, piles will easily be crushed easily.

※Though BCF nylon is excellent in durability, if the yarn volume is not enough to support each other, piles can be easily crushed down.

#### [ Durability difference by yarn weight ]



TOLI original test ※The above data are actual test results and not guaranteed values.

## Maintenance services in Japan only

### Dirty carpet tile is cleaned & refreshed. Refresh service and make-up service

Type of contract : Per session (one-off)

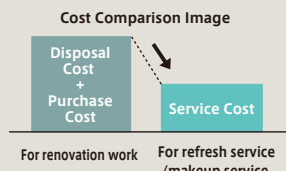
#### ■ Benefits of maintenance service

Promises a clean and beautiful finish

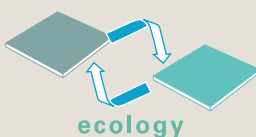
Comparison before and after cleaning



Cost effectiveness by eliminating disposal and re-purchasing costs



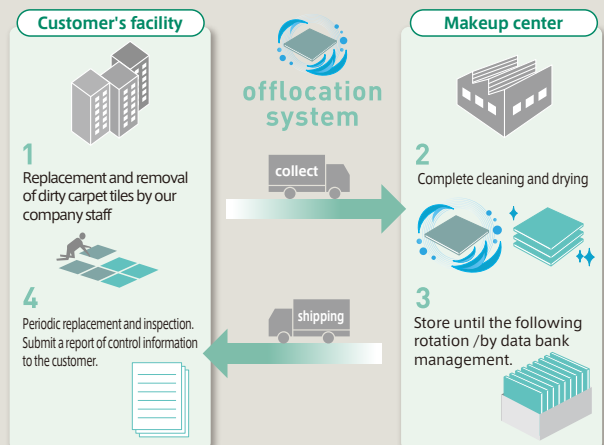
Global Environment-friendly  
Contributing to Eco-Friendly by Reducing Waste



### Off-Location® System Type of contract: Annual contract

"Off-Location System" is a unique maintenance system that efficiently replaces carpet tiles with regular rotation to maintain the aesthetics of the entire floor as well as enabling long-term use.

#### ■ Service flow



The system received the Good Design Award in 2008, in recognition of its excellence in a recycling-oriented business model that is efficient and environmentally friendly without waste.

# THE LAKE

【湖】

In quiet air.

The lake will show you various scenes affected by wind, light and climate.

Its beautiful expression is softly-swaying, ever-changing, and will provide the feeling of grandeur and relief.

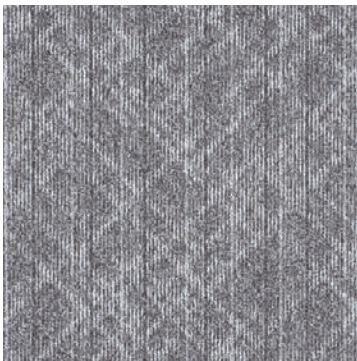
Three textures of THE LAKE are inspired by the “ever-changing lake surface” that shows various expressions.

Clear-air atmosphere just like a lakeside can be well created by their subtle grayish colors and various tone of blue.





GA3641 · GA3672 · GA36206



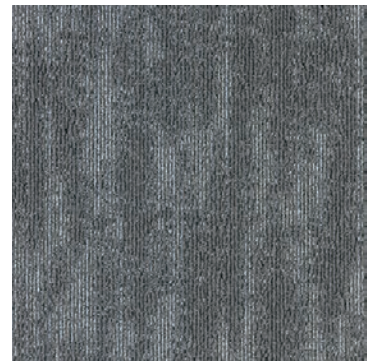
**SHINE RHOMBUS**

See p.6-7



**AQUA PLAIN**

See p.8-9



**LUSTER FLOW**

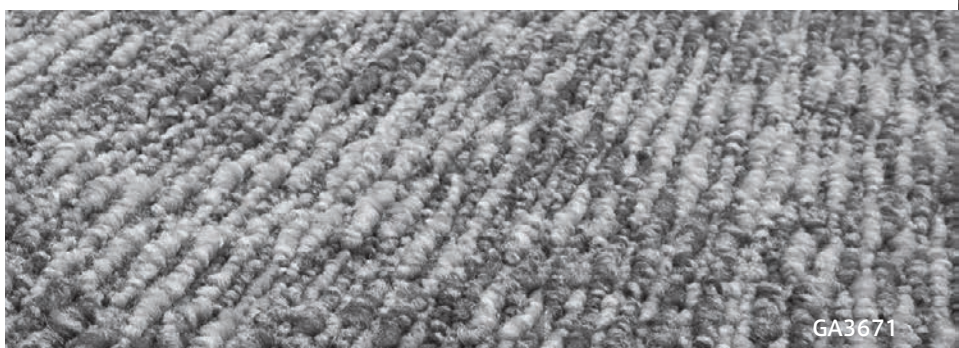
See p.10-11

[GA-3600 SUSTIVE BACK ]  
**SHINE RHOMBUS**

Inspired by translucent image of broadly-spread ice on the lake surface. Crossed diagonal lines will provide a sense of depth.



GA3671 · GA3678



GA3671

**Composition** Pile: BCF Nylon 100% (Solution Dyed Nylon)  
 Backing: PVC + Glass Fiber (SUSTIVE BACK)

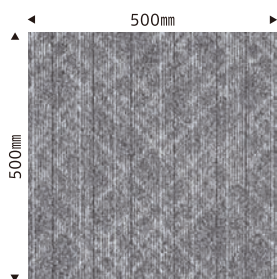
**Specification** Pile length: H 4.5mm / L 3mm  
 Textured loop pile  
 Overall thickness: 6.8mm  
 Dimensions: 500mm x 500mm  
 1/10 gauge 13.0 stitches  
 Packaging: 16 pcs. (4m<sup>2</sup>)/box

Flame retardancy / Test number E2220066  
 Anti-static property / Charged voltage of human body 1.0kV or less (JIS L 1021-16: 23° C, 25%RH, Synthetic rubber sole)  
 Anti-fouling / Stain Release by fluoridation

- Can be installed either in quarter turn or monolithic direction.
- In case that color shadings or tile joints are too obvious by monolithic installation, interchange the tiles partially so that it will look natural.
- To have a natural image after installation, stripes are intentionally inserted in the design at regular intervals, which is not a manufacturing defect. If the design looks unnatural after installation, interchange the tiles partially so that it will look natural.
- We use the same colored yarn for following paired items. However, the color and texture may look slightly different when the pairs are coordinated together.

[GA3641 · GA3671] [GA3643 · GA3672]

[GA3642 · GA3674] [GA3647 · GA3676] ※This design (former texture 6) has already been registered.



GA3671



GA3672



GA3674



GA3676



GA3677



All products  
 [ water/oil-repellent, and soil-resistant finish with fluoridation ]

Reliable durability  
 [ Products conforming to Standard Specification for Public Building Works, Class 1 ]



THE LAKE



GA3672 · GA3676 · GA3677



GA3678



GA3678



GA3678

Installation Method	Subfloor	Adhesive coverage
Loose-lay method (Eco-GA Cement, Tackifier adhesive)	Steel, Plastics and PVC Tiles	40~60g/m <sup>2</sup>
	Dry mortar and wooden floors (plywood, etc.)	60~100g/m <sup>2</sup>



[GA-3600 SUSTIVE BACK]

# AQUA PLAIN

Delicate texture inspired by the quiet underwater world can work well in various applications.



GA3642 



GA3641

**Composition** Pile: BCF Nylon 100% (Solution Dyed Nylon)  
 Backing: PVC + Glass Fiber (SUSTIVE BACK)

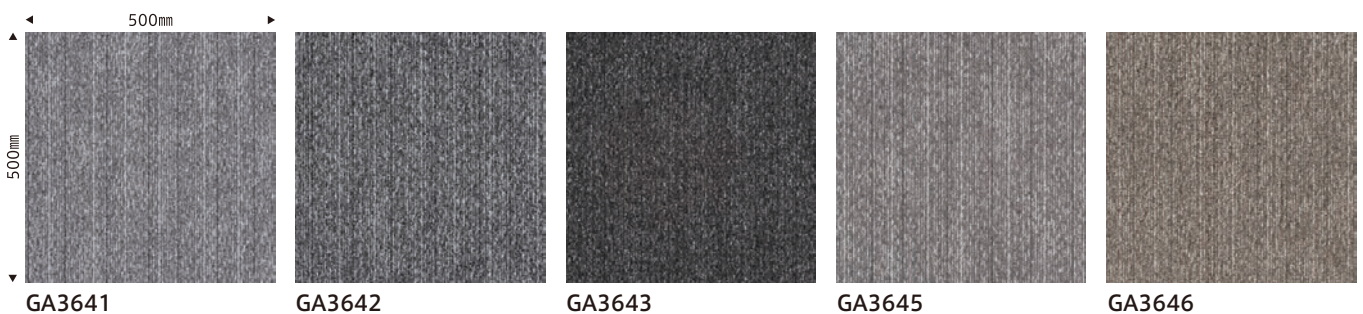
**Specification** Pile length: H 4.5mm / L 3mm  
 Textured loop pile  
 Overall thickness: 6.8mm  
 Dimensions: 500mm x 500mm  
 1/10 gauge 13.0 stitches  
 Packaging: 16 pcs. (4m<sup>2</sup>)/box

Flame retardancy / Test number E2220067  
 Anti-static property / Charged voltage of human body 1.0kV or less (JIS L 1021-16: 23° C, 25%RH, Synthetic rubber sole)  
 Anti-fouling / Stain Release by fluoridation

- Can be installed either in quarter turn or monolithic direction.
- In case that color shadings or tile joints are too obvious by monolithic installation, interchange the tiles partially so that it will look natural.
- To have a natural image after installation, stripes are intentionally inserted in the design at regular intervals, which is not a manufacturing defect. If the design looks unnatural after installation, interchange the tiles partially so that it will look natural.
- We use the same colored yarn for following paired items. However, the color and texture may look slightly different when the pairs are coordinated together.

[GA3641 · GA3671] [GA3643 · GA3672]

[GA3642 · GA3674] [GA3647 · GA3676] ※This design (former texture 6) has already been registered.



All products  
 [ water/oil-repellent, and soil-resistant finish with fluoridation ]  
 Reliable durability  
 [ Products conforming to Standard Specification for Public Building Works, Class 1 ]



THE LAKE



GA364 · 5GA3647



GA3642



GA3642



GA3647


Installation Method	Subfloor	Adhesive coverage
Loose-lay method (Eco-GA Cement, Tackifier adhesive)	Steel, Plastics and PVC Tiles	40~60g/m <sup>2</sup>
	Dry mortar and wooden floors (plywood, etc.)	60~100g/m <sup>2</sup>

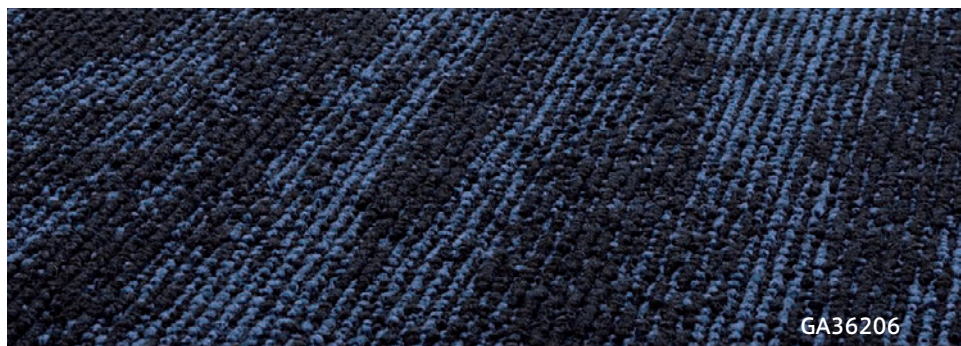


[GA-3600 SUSTIVE BACK ]  
**LUSTER FLOW**

The image of shimmering water surface is well depicted by its delicate color shading and rich textures.



GA36201 



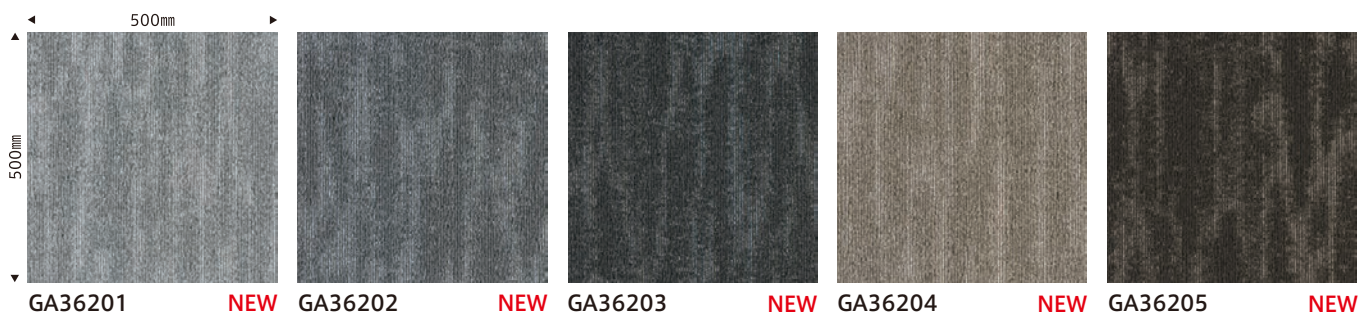
GA36206

**Composition** Pile: BCF Nylon 100% (Solution Dyed Nylon)  
 Backing: PVC + Glass Fiber (SUSTIVE BACK)

**Specification** Pile length: H 5mm ~ L 3mm  
 Textured loop pile  
 Overall thickness: 7.3mm  
 Dimensions: 500mm x 500mm  
 1/10 gauge 13.5 stitches  
 Packaging: 16 pcs. (4m<sup>2</sup>)/box

Flame retardancy / Test number E2220103  
 Anti-static property / Charged voltage of human body 1.0kV or less (JIS L 1021-16: 23° C, 25%RH, Synthetic rubber sole)  
 Anti-fouling / Stain Release by fluoridation

- Can be installed either in quarter turn or monolithic direction.
- In case that color shadings or tile joints are too obvious by monolithic installation, interchange the tiles partially so that it will look natural.



All products  
 [ water/oil-repellent, and soil-resistant finish with fluoridation ]  
 Reliable durability  
 [ Products conforming to Standard Specification for Public Building Works, Class 1 ]



THE LAKE



Monolithic



GA36202-TTN3124



Monolithic



GA36205



Quarter turn



GA36205

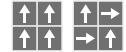


GA36206

NEW

Installation Method	Subfloor	Adhesive coverage
Loose-lay method (Eco-GA Cement, Tackifier adhesive)	Steel, Plastics and PVC Tiles	40~60g/m <sup>2</sup>
	Dry mortar and wooden floors (plywood, etc.)	60~100g/m <sup>2</sup>

Monolithic Quarter turn



# THE GROUND

【大地】

Grand landscape;

Earth continues to change constantly,  
creating a variety of expressions.

The vast land will open our hearts,  
sometimes to give us a strong energy.

The two new textures of THE GROUND series,  
are expressing the ground with different features.

Mild change of colors and rhythmic patterns in its  
design will spread in all direction and create open  
and comfortable place for all.



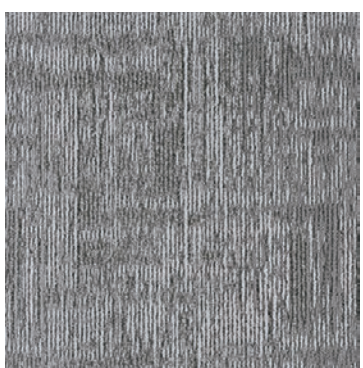


GA36304 · GA36305 · GA36501



**CALM HORIZON**

See p.14-15



**LATTICE VALLEY**

See p.16-17

[GA-3600 SUSTIVE BACK ]

# CALM HORIZON

Vast landscape pattern with delicate colors will create a spacious room scene.



GA36302  Monolithic



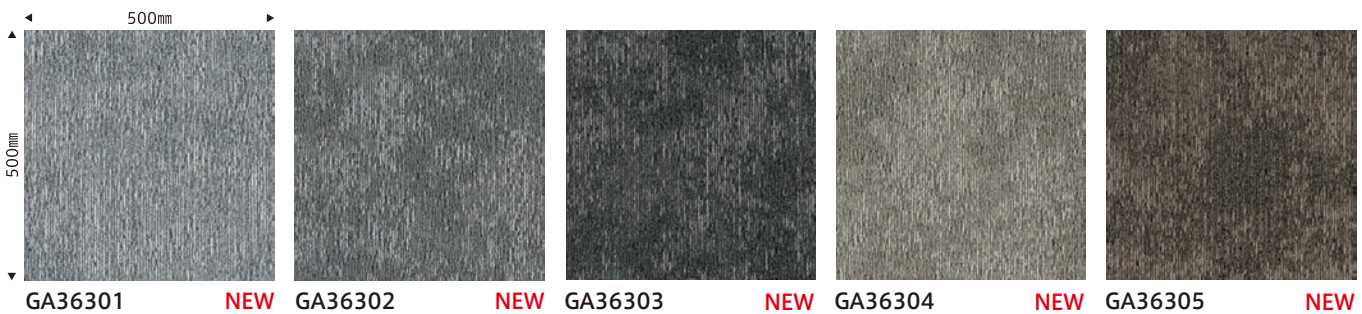
GA36305

Composition Pile: BCF Nylon 100% (Solution Dyed Nylon)  
 Backing: PVC + Glass Fiber (SUSTIVE BACK)

Specification Pile length: H 5mm ~ L 3mm  
 Textured loop pile  
 Overall thickness: 7mm  
 Dimensions: 500mm x 500mm  
 1/10 gauge 11.5 stitches  
 Packaging: 16 pcs. (4m<sup>2</sup>)/box

Flame retardancy / Test number E2220105  
 Anti-static property / Charged voltage of human body 1.0kV or less (JIS L 1021-16: 23° C, 25%RH, Synthetic rubber sole)  
 Anti-fouling / Stain Release by fluoridation

- Can be installed either in quarter turn or monolithic direction.
- In case that color shadings or tile joints are too obvious by monolithic installation, interchange the tiles partially so that it will look natural.





All products

[ water/oil-repellent, and soil-resistant finish with fluoridation ]

Reliable durability

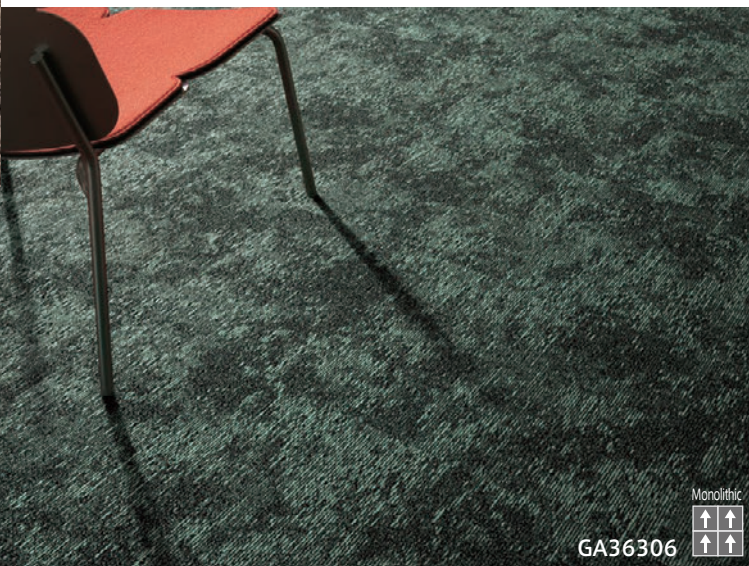
[ Products conforming to Standard Specification for Public Building Works, Class 1 ]



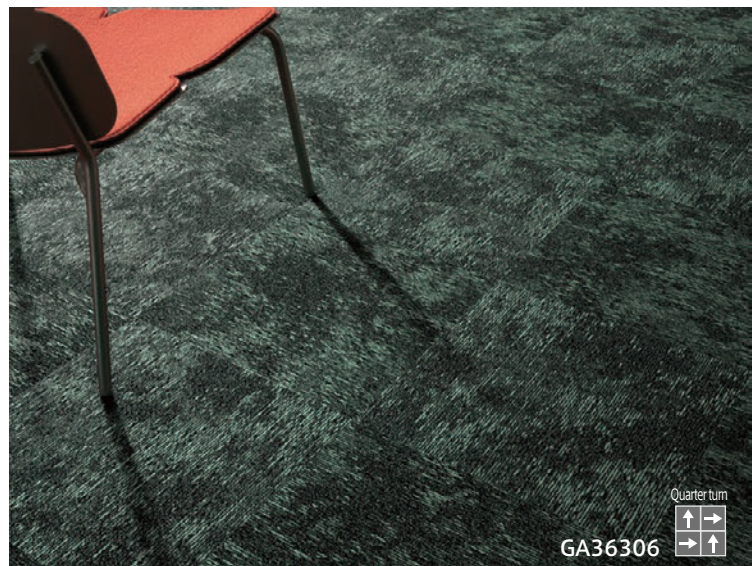
THE GROUND



GA36301 · GA36307



GA36306



GA36306



GA36306



NEW GA36307

NEW

Installation Method	Subfloor	Adhesive coverage
Loose-lay method (Eco-GA Cement, Tackifier adhesive)	Steel, Plastics and PVC Tiles	40~60g/m <sup>2</sup>
	Dry mortar and wooden floors (plywood, etc.)	60~100g/m <sup>2</sup>



[GA-3600 SUSTIVE BACK ]

# LATTICE VALLEY

Beautiful design with a rustic image by natural weathering and mild color shading.



GA36501 



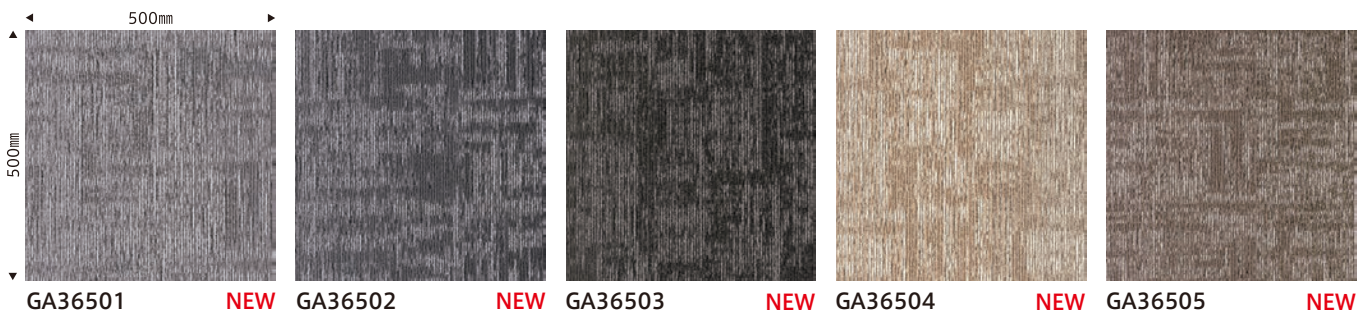
GA36504

**Composition** Pile: BCF Nylon 100% (Solution Dyed Nylon)  
 Backing: PVC + Glass Fiber (SUSTIVE BACK)

**Specification** Pile length: H 5mm ~ L 3mm  
 Textured loop pile  
 Overall thickness: 7mm  
 Dimensions: 500mm x 500mm  
 1/10 gauge 12.0 stitches  
 Packaging: 16 pcs. (4m<sup>2</sup>)/box

Flame retardancy / Test number E2220104  
 Anti-static property / Charged voltage of human body 1.0kV or less (JIS L 1021-16: 23° C, 25%RH, Synthetic rubber sole)  
 Anti-fouling / Stain Release by fluoridation

- Can be installed either in quarter turn or monolithic direction.
- In case that color shadings or tile joints are too obvious by monolithic installation, interchange the tiles partially so that it will look natural.



All products  
 [ water/oil-repellent, and soil-resistant finish with fluoridation ]

Reliable durability  
 [ Products conforming to Standard Specification for Public Building Works, Class 1 ]



THE GROUND



GA36504 · GA36506



GA36503



GA36503



GA36506

NEW

Installation Method	Subfloor	Adhesive coverage
Loose-lay method (Eco-GA Cement, Tackifier adhesive)	Steel, Plastics and PVC Tiles	40~60g/m <sup>2</sup>
	Dry mortar and wooden floors (plywood, etc.)	60~100g/m <sup>2</sup>



# THE BARK

## 【樹皮】

Trees that are firmly rooted in the earth.

The bark covering the surface of the trunk has a deep expression.

There is no flower or fruit-like glamour there, it just gives us a sense of dignity and trust to protect themselves from the harsh climate.

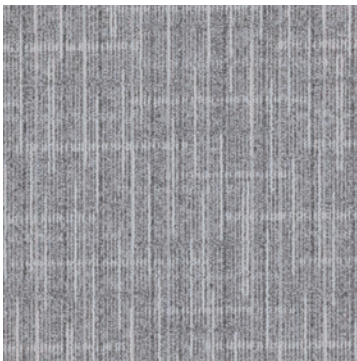
The three textures of THE BARK are, focusing on the bark cultivated in nature, and with the various shades latent in the earth color, representing deep shadows cast by irregularly-overlapping bark.

With a modest yet secured feeling of bark image without flashiness, you can create relaxing room with renewed reliability.





GA3662 · GA3690 · GA36103



## LAYERED BIRCH

See p.20-21



## CEDAR LINE

See p.22-23



## BLOCK ASH

See p.24-25

[GA-3600 SUSTIVE BACK ]  
**LAYERED BIRCH**

Texture with a 3-dimensional image by overlapped lines.  
 Deep and refined images can be created.



GA3681 · GA3682  Monolithic



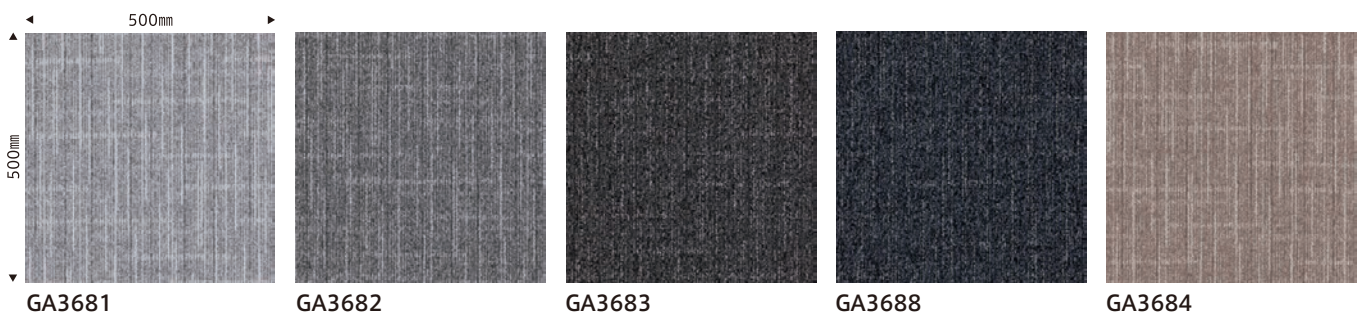
GA3694

**Composition** Pile: BCF Nylon 100% (Solution Dyed Nylon)  
 Backing: PVC + Glass Fiber (SUSTIVE BACK)

**Specification** Pile length: H 4.5mm / L 3mm  
 Textured loop pile  
 Overall thickness: 6.8mm  
 Dimensions: 500mm x 500mm  
 1/10 gauge 12.5 stitches  
 Packaging: 16 pcs. (4m<sup>2</sup>)/box

Flame retardancy / Test number E2220065  
 Anti-static property / Charged voltage of human body 1.0kV or less (JIS L 1021-16: 23° C, 25%RH, Synthetic rubber sole)  
 Anti-fouling / Stain Release by fluoridation

- Can be installed either in quarter turn or monolithic direction.
- In case that color shadings or tile joints are too obvious by monolithic installation, interchange the tiles partially so that it will look natural.
- To have a natural image after installation, stripes are intentionally inserted in the design at regular intervals, which is not a manufacturing defect. If the design looks unnatural after installation, interchange the tiles partially so that it will look natural.



All products  
 [ water/oil-repellent, and soil-resistant finish with fluoridation ]

Reliable durability  
 [ Products conforming to Standard Specification for Public Building Works, Class 1 ]



THE BARK



GA3684 · GA3685 



GA3684 



GA3684 

Installation Method	Subfloor	Adhesive coverage
Loose-lay method (Eco-GA Cement, Tackifier adhesive)	Steel, Plastics and PVC Tiles	40~60g/m <sup>2</sup>
	Dry mortar and wooden floors (plywood, etc.)	60~100g/m <sup>2</sup>



GA3685



GA3687



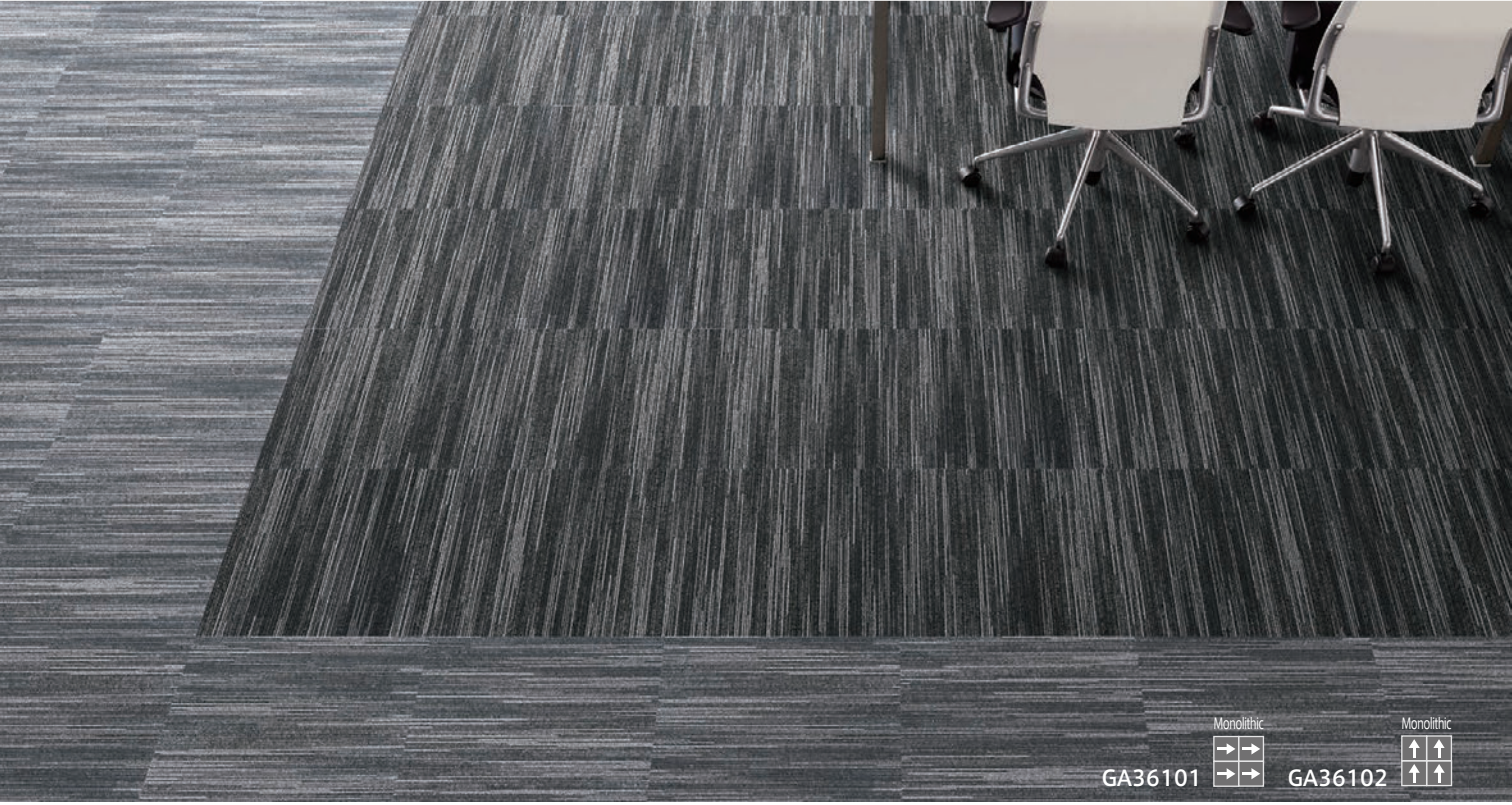
GA3690



GA3694 **NEW**

[GA-3600 SUSTIVE BACK ]  
**CEDAR LINE**

Natural and random flowing image inspired by bark of trees is expressed in a stylish way.

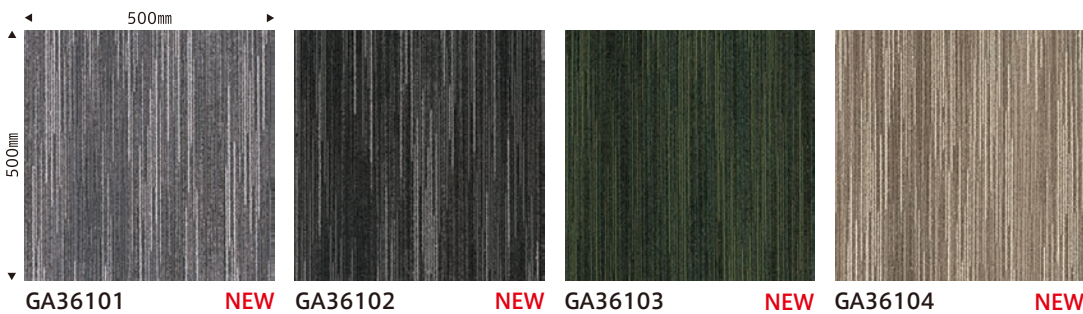


**Composition** Pile: BCF Nylon 100% (Solution Dyed Nylon)  
 Backing: PVC + Glass Fiber (SUSTIVE BACK)

**Specification** Pile length: H 4.5mm / L 3mm  
 Textured loop pile  
 Overall thickness: 6.8mm  
 Dimensions: 500mm x 500mm  
 1/10 gauge 13.0 stitches  
 Packaging: 16 pcs. (4m<sup>2</sup>)/box

Flame retardancy / Test number E2220102  
 Anti-static property / Charged voltage of human body 1.0kV or less (JIS L 1021-16: 23° C, 25%RH, Synthetic rubber sole)  
 Anti-fouling / Stain Release by fluoridation

- Can be installed either in quarter turn or monolithic direction.
- In case that color shadings or tile joints are too obvious by monolithic installation, interchange the tiles partially so that it will look natural.
- To have a natural image after installation, stripes are intentionally inserted in the design at regular intervals, which is not a manufacturing defect. If the design looks unnatural after installation, interchange the tiles partially so that it will look natural.



GA36101 **NEW** GA36102 **NEW** GA36103 **NEW** GA36104 **NEW**




All products  
 [ water/oil-repellent, and soil-resistant finish with fluoridation ]

Reliable durability  
 [ Products conforming to Standard Specification for Public Building Works, Class 1 ]



THE BARK



GA36103·GA36104 



GA36101 



GA36101 

Installation Method	Subfloor	Adhesive coverage
Loose-lay method (Eco-GA Cement, Tackifier adhesive)	Steel, Plastics and PVC Tiles	40~60g/m <sup>2</sup>
	Dry mortar and wooden floors (plywood, etc.)	60~100g/m <sup>2</sup>



[GA-3600 SUSTIVE BACK ]

# BLOCK ASH

Texture with deep shading by overlapped layers.  
Imbricated block patterns will provide comfortable and rhythmic feelings.



GA3661 



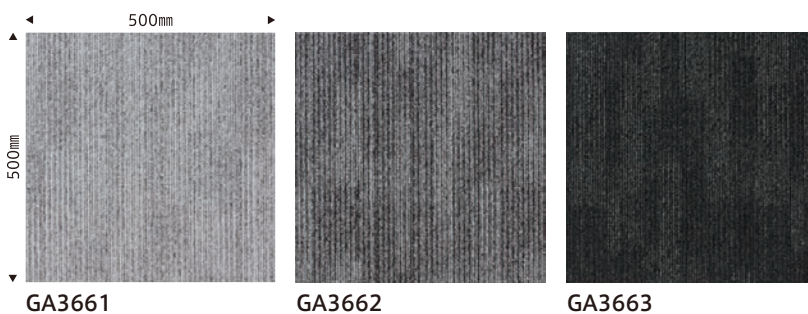
GA3662

**Composition** Pile: BCF Nylon 100% (Solution Dyed Nylon)  
Backing: PVC + Glass Fiber (SUSTIVE BACK)

**Specification** Pile length: H 4.5mm / L 3mm  
Textured loop pile  
Overall thickness: 6.8mm  
Dimensions: 500mm x 500mm  
1/10 gauge 12.5 stitches  
Packaging: 16 pcs. (4m<sup>2</sup>)/box

Flame retardancy / Test number E2220064  
Anti-static property / Charged voltage of human body 1.0kV or less (JIS L 1021-16: 23° C, 25%RH, Synthetic rubber sole)  
Anti-fouling / Stain Release by fluoridation

- Can be installed either in quarter turn or monolithic direction.
- In case that color shadings or tile joints are too obvious by monolithic installation, interchange the tiles partially so that it will look natural.
- To have a natural image after installation, stripes are intentionally inserted in the design at regular intervals, which is not a manufacturing defect. If the design looks unnatural after installation, interchange the tiles partially so that it will look natural.



All products  
 [ water/oil-repellent, and soil-resistant finish with fluoridation ]

Reliable durability  
 [ Products conforming to Standard Specification for Public Building Works, Class 1 ]



THE BARK



GA3662 · GA3663



GA3662



GA3662

Installation Method	Subfloor	Adhesive coverage
Loose-lay method (Eco-GA Cement, Tackifier adhesive)	Steel, Plastics and PVC Tiles	40~60g/m <sup>2</sup>
	Dry mortar and wooden floors (plywood, etc.)	60~100g/m <sup>2</sup>



# GA-3600 SUSTIVE BACK

## Image collection

GA36304 · GA36305 · GA36306



### CONTENTS



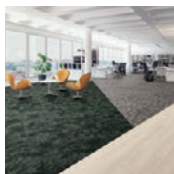
Office

p.27 – 33



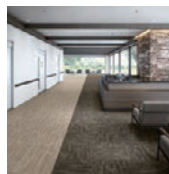
Education/Public

p.44 – 45



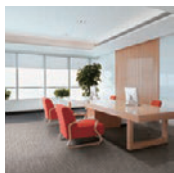
GA-3600  
Sustive Back + LL

p.34 – 35



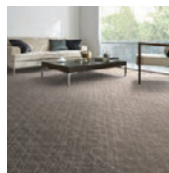
Hospital/Healthcare

p.46



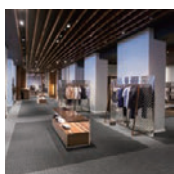
Hotel

p.36 – 39



Residential

p.47



Commercial  
Facilities

p.40 – 43

# Office



# Office



Monolithic  
GA36301 · GA36302



Monolithic  
GA3684 · TTN3121





GA36504 · GA36505 · GA36506



GA3641









Office



GA3687 · GA3688 · GA36505



GA36206 · GA36301





Monolithic  
↑↑  
↑↑  
GA3641·TTN3211



Monolithic  
↑↑  
↑↑  
GA36501·GA36503·GA36506·TTN3213

GA-3600

# SUSTIVE BACK+LL : (Loose-lay Tile)





GA3672 · TTN3126



## Loose-lay Tile with optimal design for coordination



Loose-lay 50NW-EX  
and Loose-lay 40NW-EX  
won the Good Design Award.



### ① Loose-lay for easy removal

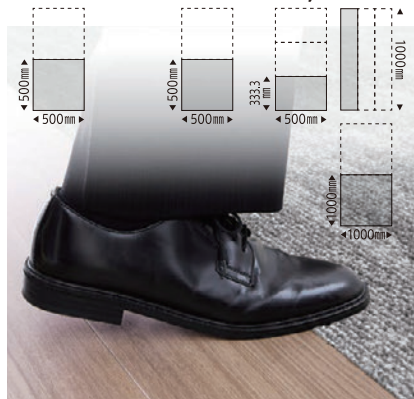
Both GA series carpet tiles and Loose-lay Tile (NW-EX series) can be installed with the same tackifier adhesive, which enables easy replacement.



### ② Common module

Designed in a common meter module, they can be well coordinated. Carpet tiles are designed a little thicker, with the assumption that the piles of carpet tiles will be pressed down when you step on.

GA-3600  
SUSTIVE BACK



### ③ Common maintenance

Loose-lay Tile NW-EX series, together with carpet tiles, can be easily maintained by a vacuum cleaner, requiring no wax maintenance. (For details on how to maintain regular Loose-lay Tiles, refer to the Sample Book or General Catalog.)

※Since NW-EX series repels the wax liquid, the specified pre-treatment is required for wax application. For details, refer to the user's manual of each product.



# Hotel



Monolithic  
→ →  
→ →  
GA3685 · GA3688



Monolithic  
→ →  
→ →  
GA36501 · GA36502 · GA36503



Monolithic  
GA36205·TTN3205



Monolithic  
GA36304·GA36305



Monolithic  
GA36307



GA36101·TTN3122



GA3685·GA3687







Monolithic  
GA36203



Monolithic  
GA36204

# Commercial Facilities



GA3682 · GA3683



GA36302





GA36504 · GA36505 · GA36506



GA36305 · TTN3115



GA36104



# Commercial Facilities




Monolithic  
↑↑  
↑↑  
GA3684 · GA36501




Monolithic  
↑↑  
↑↑  
GA3684 · GA3694




GA36304 



GA3676 · GA3677 



GA36101 · GA36102 



GA36503  GA36506 

# Education/Public





GA36201 · GA36202  GA36206 



GA3642 · GA3643  45

# Hospital/Healthcare



GA36204  GA36205 



GA36104  GA36204 



GA3647  TTN3122 



# Residential



Monolithic  
GA3677

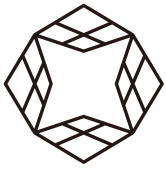


Monolithic  
GA36303



Monolithic  
GA36304





# TOLI Ai Simulator Image Fit

## Easy Interior Simulation by Taking a Picture and Selecting!

TOLI Ai Simulator, Image Fit is a simulation system that can easily create an installation image by synthesizing the TOLI interior materials into your design space. It is also compatible with the room image you take with your smartphone, etc., so please enjoy combinations of various product images into your own room image.

### For any space design



Photos taken by smartphones can be used. Image Fit will help you visualize the design.



### Authentic image in high quality



Room images are created with an appropriate scale. You can also choose the coordinated design provided in the library.



### Quick and easy simulation



Just choose the room image and the product for simulation, and option of installing direction, then the synthesized image will come out right away.

If you have an internet connection, you can easily use it anytime.



# Guide to functional logos

## Flame retardant property



This is a unified mark defined by the Nippon Interior Association (NIF). It has passed the flame retardant performance test based on the Fire Defense Law in Japan.

## Antistatic control



This is a unified mark defined by the Nippon Interior Association (NIF). It has passed the NIF standards for antistatic-electricity control.

## Antifouling property



Indicates the antifouling property of the product. It also has a performance of easy maintenance. Note that daily maintenance is the most effective way to preserve aesthetics.

## Walkers' mark

Indicates the durability of the product. Products are comprehensively judged and ranked based on the product specification, pile retention, static-load resistance, and abrasion data.



Commercial 4  
Products carrying this logo are suitable for heavy-traffic areas where even heavy carts frequently move around. It is good for places such as airports, department stores, shopping malls, offices, entrance halls and lobbies in public facilities.

## Green Purchasing Law-compliant product



"Green Purchasing Law-compliant products" standardized mark defined by the Interior Floor Industrial Association. Total weight of unused fiber, recycled fiber, recycled plastic and other recycled materials is at least 25% by weight of such product.

## Eco Mark



This product has been recognized as useful for environmental preservation because of its low environmental impact throughout its entire life cycle, from "production" to "disposal."

## F☆☆☆☆ mark

F☆☆☆☆

This is a unified mark indicated by the voluntary VOC (formaldehyde) emission standards established by the Interior-Fabrics Performance Evaluation Conference. The F☆☆☆☆ is a top class category.

## Environment-friendly product mark



Such products are recommended by TOLI as contributing to the reduction of environmental impact.

## ECO LEAF



The ECO-LEAF Declaration (Label) verifies and discloses quantitative environmental impact data of products obtained through LCA (Life Cycle Assessment = Environmental impact assessment over the lifetime of a product from resource extraction to manufacturing, assembly, distribution, use, disposal and recycling).

## Green Label Plus



This certification system for the indoor air quality of carpet products was established by 'CRI', Carpet & Rug Institution in USA.



# TOLI Ai Simulator Image Fit

## Easy Interior Simulation by Taking a Picture and Selecting!

TOLI Ai Simulator, Image Fit is a simulation system that can easily create an installation image by synthesizing the TOLI interior materials into your design space. It is also compatible with the room image you take with your smartphone, etc., so please enjoy combinations of various product images into your own room image.

### TOLI Corporation - Global Department

2-10-4 Higashi-Shinbashi Minato-ku Tokyo  
105-0021 Japan  
Phone : +81-3-5403-2078  
Fax : +81-3-5472-6307  
<http://toli-overseas.com/>

### TOLI Corporation Singapore Branch

1 North Bridge Road High Street Centre #21-10 Singapore 179094  
Phone : +65-3138-5052  
Fax : +65-6491-5234  
<http://toli-overseas.com/>

### TOLI (SHANGHAI) Corporation

Room 314, Building 1, No.55 Yuyao Rd., Jingan,  
Shanghai 200040 China  
Phone : +86-21-6071-0688  
Fax : +86-21-6071-0560  
<http://cn.toli-overseas.com/>



**TOLI Corporation is certified  
to ISO9001**



**TOLI Corporation is certified  
according to ISO14001  
for carpet production.**

<http://toli-overseas.com/>

Please visit our website to see E-catalogue and Library where the images can be picked up.

**MADE IN JAPAN**

#### Notes on selection

- In the case of light-colored carpet, dirt tends to be more obvious. When selecting carpet, please bear in mind the above in the color selection.
- Please avoid using in locations where moisture is expected to rise constantly from the subfloor. Otherwise adhesion failure and bad smell could occur.

! Excess alkaline moisture in concrete-type subfloor may dissolve the plasticizer in PVC tile backing and emit an unpleasant alcohol-type odor. Before installation, be sure to check the moisture content of the subfloor, and if it is higher than 8%, dry out the sub-floor sufficiently. For more information please contact TOLI sales reps.

- In some cases, there might be slight color difference between actual products and color swatches or images on the catalogue.
- This sample book is based on the information as of June 2022. It may be changed without prior notice.

#### Notes on installation

- To ensure the stickiness of TOLI ECO GA Cement, begin installation only after you have applied the adhesive and it has become semi-transparent. After it has become semi-transparent, be careful not to lay the carpet tiles too closely together.

#### Notes on maintenance and use

! To maintain the beauty of the carpet and to protect from the dust, depending on the volume of foot traffic, carry out a daily maintenance with an electric cleaner or vacuum cleaner. In work spaces, in addition to daily maintenance, intensive cleaning on a regular basis is recommended, depending on the usage.

- When you use a vacuum cleaner with a brush, please be careful not to damage the surface piles.
- If dirt adheres to the carpet, please wipe it up promptly before it spreads. As time passes, the dirt will become more difficult to remove. Please also bear in mind that some type of contaminants cannot be removed.
- When you remove spots or stains, depending on the source of the stain, use a suitable stain remover or a neutral detergent, etc. Incorrect selection of a stain remover or detergent may result in even more discoloration.
- The use of chemicals or detergents with strong action, or liquids such as bleach, may result in discoloration or loss of color, or deterioration of the carpet itself. Please be sure not to spill such liquids.
- Rubber products such as the rubber legs of certain types of furniture and rubber mats, as well as paint, preservatives or insecticides may stain the carpet and result in discoloration or loss of color. Please do not let such things touch the carpet directly.
- Using in certain environments, such as environments exposed to direct sunlight, may result in discoloration or loss of color. Please block out the sunlight using a curtain or blind, etc.
- Ventilation is recommended to eliminate material odor.
- There may be indentation caused by the concentrated load, such as high heels or furniture. Please be cautious, especially when installing on raised floor which has some openings.