

GX

TOLI
GRAPHIC
CARPET TILES

TOLI GRAPHIC CARPET TILES
2024-2027

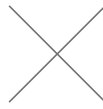


Japan Design

Japanese Feeling and Reliable Quality

Delicate aesthetic feeling which blends and deepens tradition and nature.

Reliable quality based on keen attention to details and technical strength.



Pursuit of Comfort

Interior Trend

Relaxing space using light and soft colors.

Cozy space with the deep feel by original texture of the materials.

Today diversity is respected, and living spaces are also becoming more diversified.

In offices, people are more conscious on improving the productivity and keeping healthy,

and because of that, the cozy space like a café or living room and the space encouraging more communications are more created.

Also there are some office spaces where regional cultures, histories, and materials are re-evaluated and they are restructured in a modern way.

In commercial facilities, open spaces where you can feel nature are being created.

And hotels are providing relaxing spaces where people can escape from the daily bustle and rest their bodies and minds.

Based on the concept of JAPAN DESIGN, TOLI GX Series will offer the carpet tile products in pursuit of "comfort" which enrich the life of people.

Index

Trend & New product information	p.2
Pattern search	p.12
Color search	p.14
Action to reduce the environmental load	p.16

GX Premium

GX-6250L	Breathflora NEW	p.20
GX-6150L	Grand flow	p.22
GX-3350	With time	p.24
MT-3350	(made-to-order product)	p.24

Urban

GX-4800	Foggyrock NEW	p.26
GX-3700	Mortarclay	p.28
GX-9050V	Srone	p.30
GX-3450	Plaid way NEW	p.32
GX-3250	Foldshape NEW	p.34
GX-4100	Geoslant	p.36

Earth

GX-4400	Aqualuce NEW	p.38
GX-8500	Luceart	p.40
GX-9950V	Link space	p.42
GX-96500V	Diffibriller II NEW	p.44
GX-9250V	Rock garden	p.46
GX-4200	Prarie	p.48
GX-3150	Haze peak	p.50
GX-3800	Altglan	p.52
MT-3800	(made-to-order product)	p.52
GX-9700V	Resonance	p.54
GX-9150V	Veniche	p.56

Fabric

GX-2650	Waffle knit	p.58
GX-4550V	Moroca line	p.60
GX-2400	Ocash	p.62
GX-8600	Etrico	p.64
GX-4900	Latticloth	p.66
GX-5100	Calmgrain	p.68
MT-5100	(made-to-order product) NEW	p.68

Japan

GX-8200	Sokoitari Soundscape	p.70
GX-81000	Sokoitari Grandair II NEW	p.72
GX-8000	Sokoitari Inspiration	p.74
GX-7900	Sokoitari Classic	p.76
GX-7800	Sokoitari	p.78
YSM	Yuisome	p.80

Comfort

GX-7650	Granastone NEW	p.82
GX-8300	Orvie	p.84
GX-8400	Nocture	p.86

Basic

GX-200		p.88
GX-200	Grid Cut (made-to-order product)	p.90
GX-200	Metal Design (made-to-order product)	p.91
GX-300		p.92

Project Reference	p.94 ~ p.131
-------------------	--------------

Others

DC-1100		p.132
RC-1200		p.133
PRS	PRIMECLASS	p.134
FBT	FABTEX	p.135
EXC	EXCHROME (partly available from stock)	p.136
TCPUS	Underlay Sheet	p.137
TTN	Loose-Lay 50NW-EX	p.138
RUG&MAT		p.139

TOLI Ai Simulator Image Fit	p.140
Precautions & Contact Information	p.141

5 spaces you feel comfortable

DESIGN INTRODUCTION

GX Series will provide "comfort" to various spaces such as offices, commercial facilities, and hotels.



1 | COMMUNICATION

Offices creating communications

Now that working styles are diversified, an office is expected to be the place for meeting and interacting. In such a space, the irregular layout of floor zoning and furniture will create a comfortable distance between workers, and encourage an active communication.

KEY COLOR

Bluish
light gray



Soft beige
like solid oak



Fresh
light blue



Yellowish
verdurous green



GX2656 (p.58) • GX3452 (p.32)



TTN3125(Loose-Lay Tile)

Refreshing open space designed for communications.

Green carpet tiles matching wood-look tiles will create a casual atmosphere.



Pleasant cooling space using carpet tiles
in the motif of water surface.

Combination of the grayish color and light-colored
wooden furniture will make a clear interior space.



2 | RELAX

Relaxing office to enhance creativity

In the office, it's important to work in a physically and mentally healthy condition. A cozy space with a sense of warmth will make you feel at home, and enhance the creativity and concentration of people working there.

KEY COLOR

Ivory
with soft texture



Mocha brown
as an accent



Sage green
with a sense of peace



Pink beige
with warmth



GX4551V • GX4553V (p.60)

Carpet tiles in the motif of woven fabric will go well with roundish furniture and airy textures. Suitable for the space like a living room.

Relaxing interior design in a soft and bright tone.

Grid patterned carpet tiles and pink beige colors accentuate the space.



GX3451 (p.32)



TTN3122(Loose-Lay Tile)



3 | REFRESH

Open-plan shopping mall like outdoors

A shopping mall plays a role of "the place of rest and relaxation in the region".
The pleasant indoor space with a sense of openness like a park will provide visitors with an energy in daily life.

KEY COLOR

Smokey gray
with a clear tone



Camel brown
like teak



Green
like fresh plants



Orange
with an energetic feel



GX9981V • GX9982V • GX9983V (p.42)



GX3252 (p.34)

In the leafy café space, the combination of carpet tiles with lattice pattern and sharp geometric design goes well with plants, and make a stylish and urban atmosphere.



GX3252 · GX3254 · GX3255 (p.34)

Combination of vibrant geometric-patterned carpet tiles and natural materials create a bright space.

Spacious and colorful atmosphere will make you happy and comfortable.



#4 | PRECIOUS

Classy hotel satisfying you physically and mentally

In the hotel focusing on essentially fine quality, careful finish and selected materials will go with its atmosphere. You can escape from your daily life and spend pleasant time only for yourself.

KEY COLOR

Decent
yellow beige



Calm and mellow
greige



Moderately glamorous
gold



Dark brown
with a deep ebony feel



Monolithic



GX7651 · GX7653 (p.82)

Relaxing space using chic colors.

By using carpet tiles with delicate expression and texture, a classy bedroom can be created.

Calm and graceful lounge area.

Well-selected materials and furniture on the top of gorgeous carpet tiles in 1000mm x 1000mm will create a one-of-a-kind space.



Monolithic
↑↑
↑↑
GX6254L (p.20)



#5 | RESPECT

Offices highlighting landscapes and histories

In the latest office, people focus on the spaces where regional climates and histories are more evaluated and old things are reused. The spaces with the a feel of passage of time will stimulate people's thinking and become the comfortable place where new ideas are born.

KEY COLOR

Gray
inspired by aged mortar



Dry beige
like cotton cloth



Terra cotta
reminiscent of brick and clay



Heavy iron
black



Monolithic



GX4801 (p.26)

Stone-look carpet tiles with sensitive color change like layers of earth will match well with aged deep colors. They can be coordinated with both new and old materials.



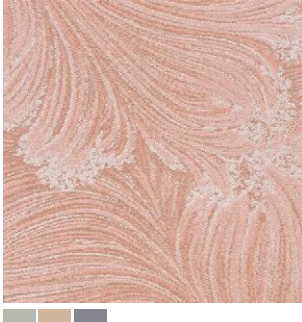
Monolithic
GX5104 · MT5154F · MT5174F (p.68)

Interior design focusing on the materials with a deep feel.
Different-textured carpet tiles in the same color tone are
installed together for zoning of the space.

Patterns for pattern search

GX Premium

Breathflora ^{NEW} p.20



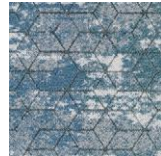
Grand flow p.22



With time p.24



MT-3350 p.24



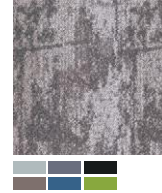
GOOD DESIGN
made-to-order product

Urban

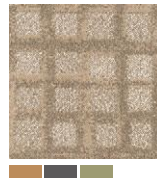
Foggyrock ^{NEW} p.26



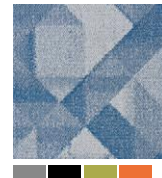
Mortarclay p.28



Plaid way ^{NEW} p.32



Foldshape ^{NEW} p.34



Geoslant p.36



Srone p.30



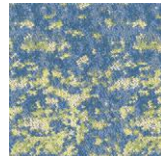
GOOD DESIGN

Earth

Aqualuce ^{NEW} p.35



Luceart p.40



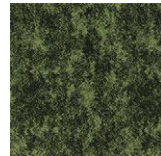
Prarie p.48



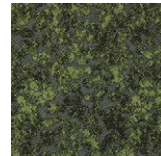
Haze peak p.50



Altglan p.52

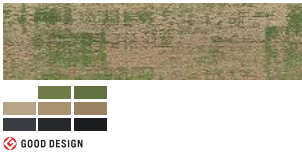


MT-3800 p.52



GOOD DESIGN
made-to-order product

Link space p.42



GOOD DESIGN

DiffibrillerII ^{NEW} p.44



GOOD DESIGN

Rock garden p.46



GOOD DESIGN

Resonance p.54



GOOD DESIGN

Veniche p.56



GOOD DESIGN

Fabric

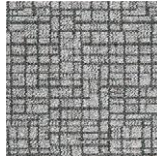
Waffle knit p.58



Ocash p.62

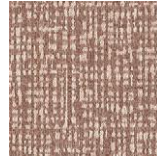


Etrico p.64



GOOD DESIGN

Latticloth p.66



Calmgrain p.68



MT-5100^{NEW} p.68



GOOD DESIGN
made-to-order product

Moroca line p.60



GOOD DESIGN

Japan

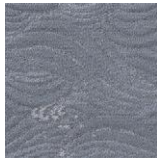
Sokoitari Soundscape p.70

Ground pattern



GOOD DESIGN

Seiha pattern



GOOD DESIGN

Sokoitari GrandairII^{NEW} p.72

Ground pattern



GOOD DESIGN

Yuki pattern



GOOD DESIGN

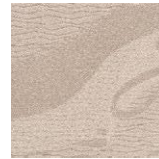
Sokoitari Inspiration p.74

Ground pattern



GOOD DESIGN

Oikaze pattern



GOOD DESIGN

Sokoitari Classic p.76

Ground pattern



GOOD DESIGN

Sokoitari p.78

Ground pattern



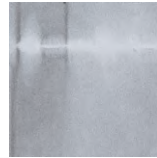
GOOD DESIGN

Yuisome p.80

YOH



YUU

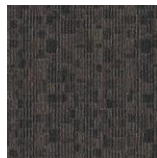


Comfort

Granastone^{NEW} p.82



Orvie p.84



Nocture p.86



Basic

GX-200 p.88



GX-300 p.92

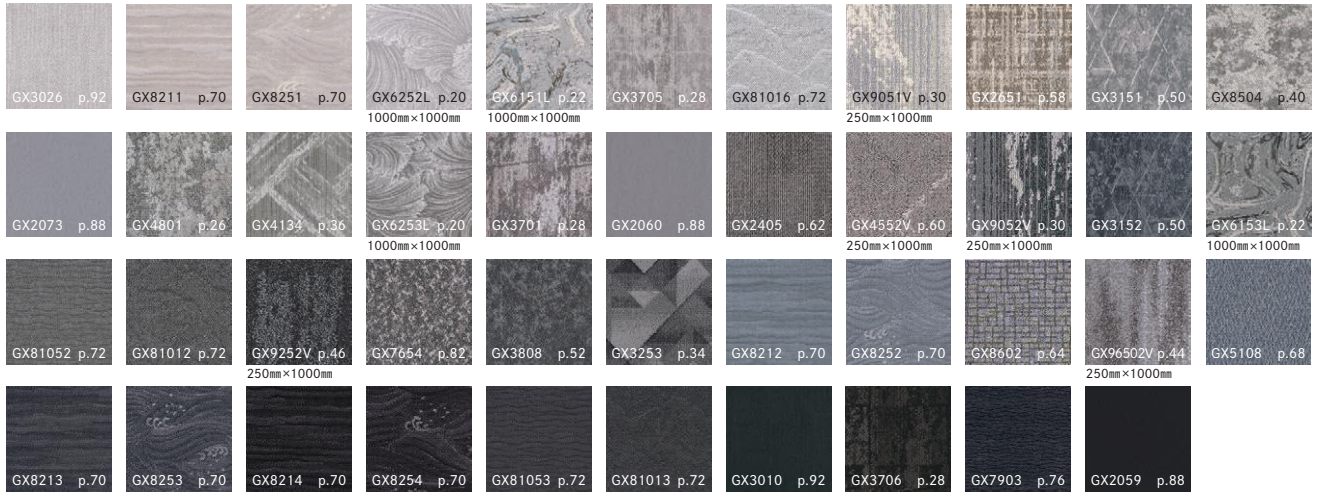


 **GOOD DESIGN**

Our unique products have won the Good Design Awards.
TOLI will continue to propose new values and characteristic designs from Japan.

Colors for color search

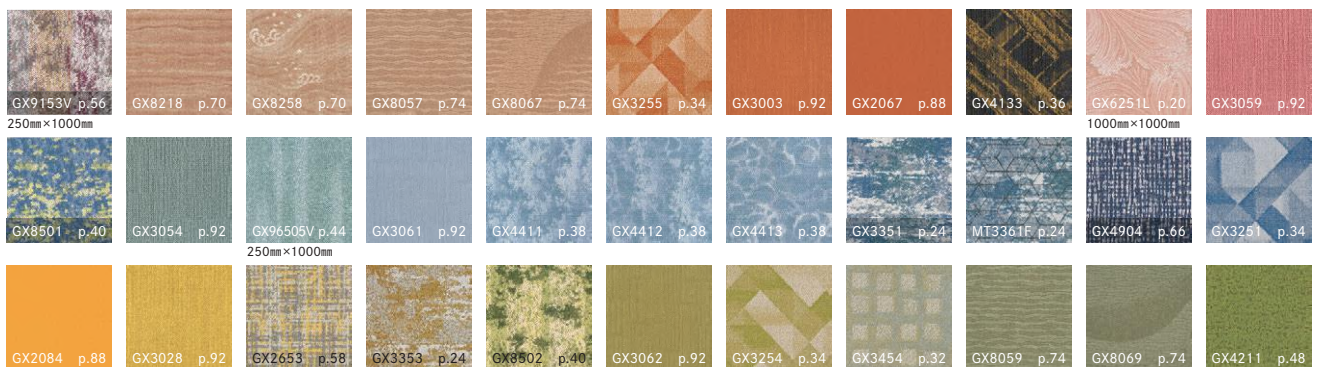
WHITE / GRAY / BLACK tones

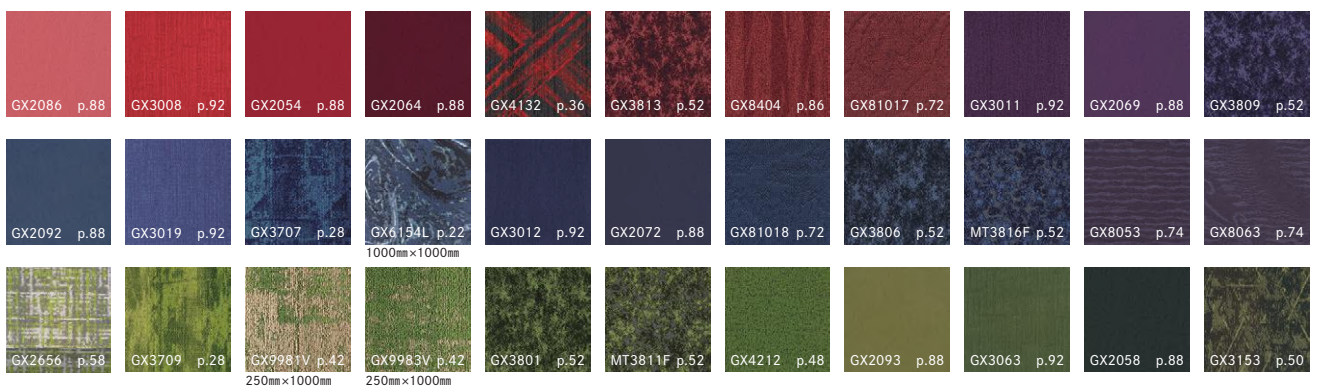
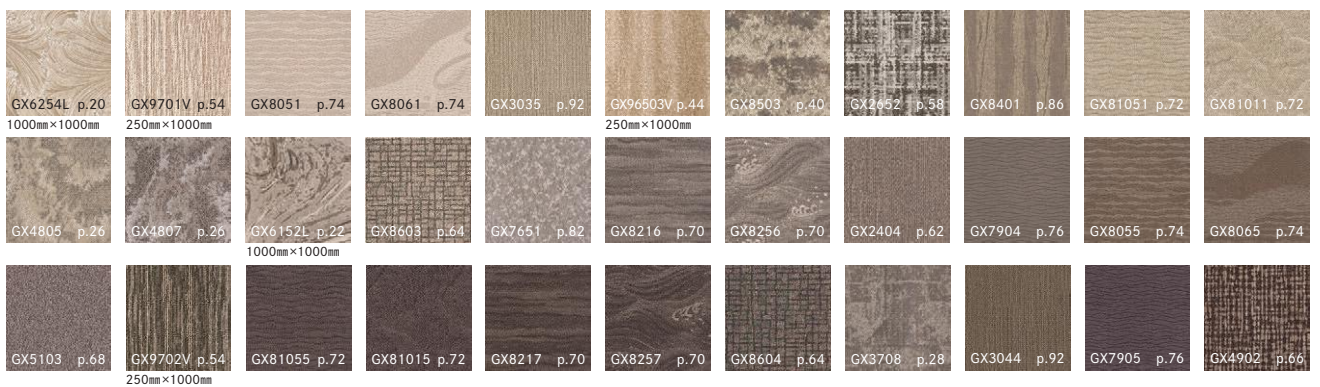
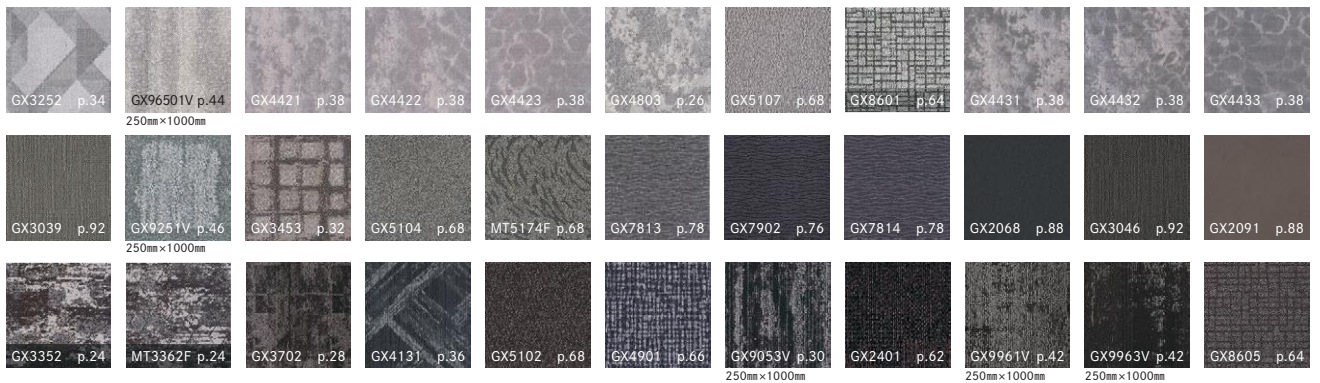


BEIGE / BROWN tones



COLORFUL various colors

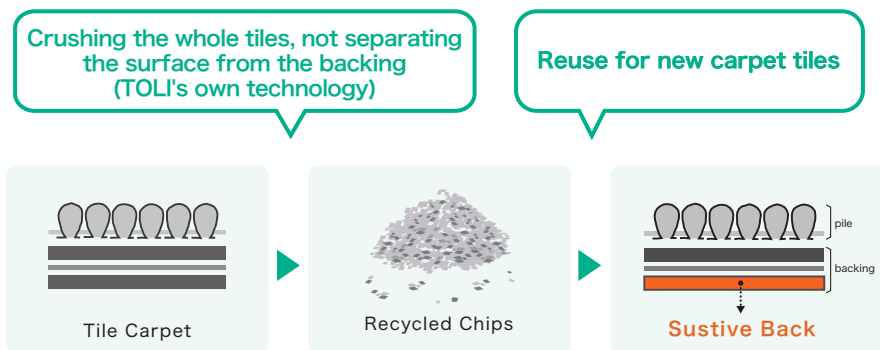




Action to reduce the environmental load about carpet tiles

TOLI Environment-Friendly Carpet Tile Backing "Sustive Back"

TOLI Group is aiming to establish the circular economy type of business activity. We are trying to reduce the environmental load and making efforts toward the sound growth of our group. To reduce of the environmental load, we are using recycled materials, recycling the waste in our factory, and trying to collect more used carpet tiles for recycling based on Wide Area Certification System in Japan.



TOLI Environment-Friendly Carpet Tile Backing

Sustive Back

TOLI Environment-Friendly Carpet Tile Backing

"Sustive Back" will realize circular economy.

Sustive Back

- Reduce Industrial Waste and Enhance Recycling
- Reduce CO₂ emission
- Weight Saving

Applicable Products
Altglan GX-3800 (p.52),
Sokoitari Classic GX-7900 (p.76)

Move forward with "TOLI Cradle-to-Cradle Recycling System"

In 2021 we introduced a new carpet tile recycling plant at Shiga TOLI Co., Ltd.

This enabled us to proceed the circular horizontal recycling, almost 100% recycling of the processable used carpet tiles into the raw materials.

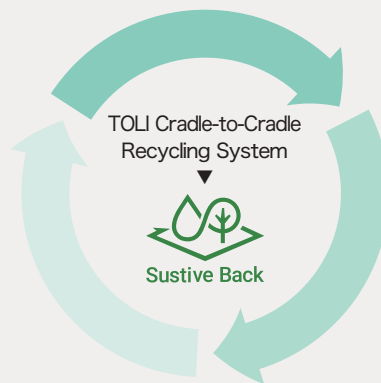
TOLI is accounting for a large share in Japanese domestic market of carpet tile business, and for further growth, we are trying to expand "TOLI Cradle-to-Cradle Recycling System".

Cradle-to-Cradle Recycling Collection ▶ Recycling ▶ Manufacture



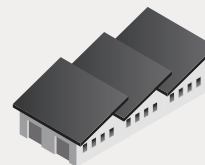
"Recycling" of Wastage in Our Carpet Tile Factory

In TOLI's factory, the wastage of carpet tiles after the production are recycled into chips, not by separating the surface pile layer (textile layer) from the backing layer (PVC layer) but crushing the whole tiles.



"Collection" of the used carpet tiles

In Japan TOLI is the one and only carpet manufacturer authorized to collect used carpet tiles. We TOLI ourselves will collect the used carpet tiles to be recycled.



"Manufacture" of environment-friendly carpet tiles

Recycled chips produced at our own plants are reused as raw materials for part of the backing of new carpet tiles manufactured by the TOLI Group. (SUSTIVE BACK)

(Available Area)

Tokyo metropolitan district

This recycling system is available only in Japan.

(Recyclable floor covering)

Used carpet tiles with vinyl backing made by TOLI

※General household waste is not included.

※"Wide-Area Certification System"

This is a special system that does not require the license of each local government, which is the basis of the legal system for waste disposal businesses, for the purpose of ensuring the reduction of waste and other appropriate disposal by having the waste disposal of products handled on a wide scale by those who manufacture, process, sell, etc. of the products (manufacturers, etc.).

Development of long-life products

Stain Release - Antifouling Finished



Water/oil-repellent and soil-resistant by fluoridation.

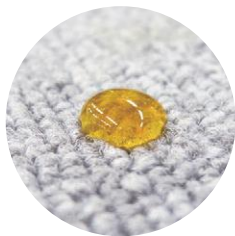
Antifouling products are resistant to stains and have excellent water and oil repellent property to maintain aesthetic appearance for a long time. Because of this repellent function, the carpet tiles will not get stained if such contaminants are wiped off promptly.



"NANO CLEAN" by special Nano-processing

In addition to the conventional antifouling process using fluorine resins, special Nano-processing is added to achieve even better antifouling performance against soil stains.

Results of the water repellency test



Fluorine-resin finish



No antifouling finish

※Anti-fouling yarns, such as hollow fibers, make stains less visible. But they have no water/oil repellent performance to repel stains. Water/oil-repellent finish is applied to prevent contamination.

Microscopic observations

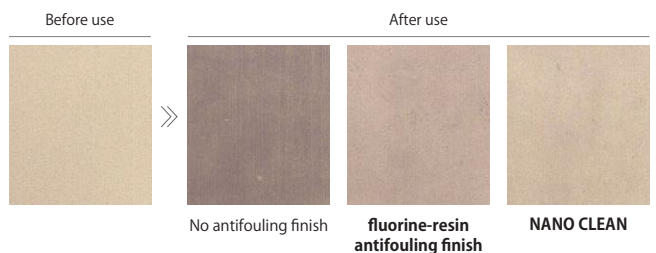


Fluorine-resin finish



No antifouling finish

Evaluation results of antifouling performance



〈Test contents〉

Use uncolored carpet tile. No-antifouling products, fluorine-resin finished products, and NANO CLEAN finished products were installed in a general office for five weeks, and the stained condition was compared fairly by rotating the position every day.

※The test was carried out without cleaning.

Better aesthetics can be maintained by the adoption of the appropriate maintenance on the antifouling products by TOLL.

NANO CLEAN processed products

〈All colors with NANO CLEAN〉

Grand flow GX-6150L (p.22) , Moroca line GX-4550V (p.60) , Etrico GX-8600 (p.64) , Yuisome YSM-300, YSM-400 (p.80) , GX-300 (p.92) , PRIMECLASS PRS-100 (p.134)

〈Some colors with NANO CLEAN〉

Sokoitari Grandair II : GX81016 (p.72)
Sokoitari Inspiration : GX8051, GX8061 (p.74)

DURABILITY

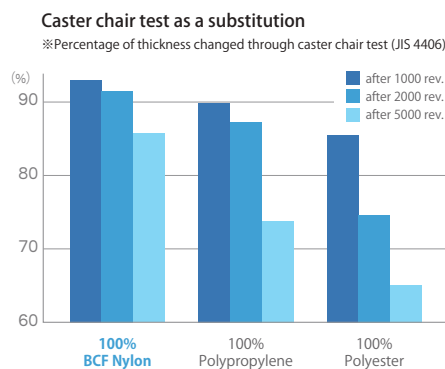
Highly-Durable BCF Nylon Used in High Density

We are also focusing on pile weight of BCF nylon, and set a criteria to use 350g/m² or more as the surface pile weight (pile weight above backing layer).

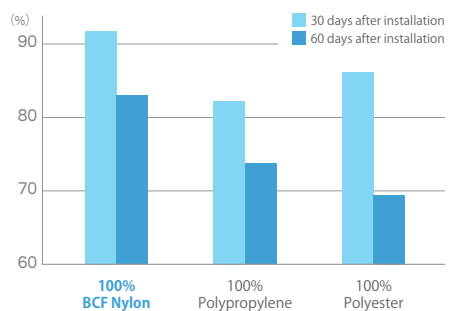
※BCF nylon is excellent in durability, but it can easily be crushed if the pile weight is insufficient.

Durability against pile crush

Durability comparison of BCF nylon, polypropylene, and polyester



Field test



BCF Nylon with its high shape retention, approx. twice as durable as polypropylene

Certification

CASBEE

Comprehensive Assessment System for Built Environment Efficiency

CASBEE is a method for evaluating and rating buildings in terms of environmental performance, which is being developed by a committee established within the Institute for Building Environment and Energy Conservation in 2001 under the leadership of the Ministry of Land, Infrastructure, Transport and Tourism of Japan.

This system comprehensively evaluates the environmental performance of buildings, including the aspects of environmental impact reduction, such as energy saving, resource saving, and recycling performance.

Also, the aspects of improving environmental quality and performance, such as indoor comfort and landscape considerations are evaluated.

Classification	Types	Applicable Products
Q1 indoor environment	1.3 Sound absorption	General carpets (applicable to all GX series products)
	4.1 Reduce the sound source	General carpet tiles (applicable to all GX series products excluding Metal Design)
Q2 service performance	1.3 Design with ease of maintenance	Antifouling carpet(for all GX series)
LR 2 resource and material	2.4 Use of recycled materials	Products compliant with Green Purchasing Law (See below for compliant GX series)

(The product compliance was evaluated by TOLI, and it should be assessed officially by the local government, etc. at project's location.)

Green product with "ECO Mark"-certified.



ECO MARK is the environmental certification organized by the Japan Environment Association.

ECO MARK-certified products are recognized as having the least impact on the environment throughout the entire life cycle from "manufacturing" to "disposal", and contributing to environmental protection.

Green product with "ECO Mark"-certified.

<Products in stock>

Altglan GX-3800 (p.52) , Sokoitari Classic GX-7900 (p.76) , Underlay sheet for CarpetTiles(p.137)

※Products including recycled materials may have variations in the color and finished texture of the backing surface, but this does not affect the quality as a carpet tile.

Compliant with Green Purchasing Law in Japan



The unified mark for "Green Purchasing Law Compliant Products" established by the Interior Fabrics Industry Revitalization Council

Products in which the total weight of unused fiber, recycled fiber, recycled plastic and other recycled materials is 25% or more by weight of the total product.

Product compliant with Green Purchasing Law

<Products in stock>

Altglan GX-3800 (p.52) , Sokoitari Classic GX-7900 (p.76)

※Products including recycled materials may have variations in the color and finished texture of the backing surface, but this does not affect the quality as a carpet tile.

LEED (Leadership in Energy & Environmental Design)

International environmental certification

LEED is a green building rating system organized by USGBC (The U.S. Green Building Council), a non-profit organization in the U.S.

LEED certificates are now increasingly obtained not only in the U.S., but more than 150 countries in the world. In Japan also, projects that preferentially adopt eco-friendly building materials, often require the products that can contribute to obtaining LEED points.

GREEN LABEL PLUS

Contributing to Assessment of Building Environmental Efficiency

All TOLI carpet tiles using 100% nylon for pile and PVC for backing have obtained GREEN LABEL PLUS.



What is GREEN LABEL PLUS?

This is a certification system for indoor air quality established by CRI (Carpet & Rug Institution) in U.S.A.

By using Green Label Plus certified products, it will contribute a point in the "LEED v4 EQ Credit Low-Emitting Materials" section of LEED certification.

ECO LEAF

Environmental Label Operated by the Sustainable Management Promotion Organization (SuMPO)



ECO LEAF is an environmental label operated by the Sustainable Management Promotion Organization (SuMPO), to verify and publish quantitative environmental impact data of products obtained through LCA.

ECO LEAF is one of Environmental Labels and Declarations (Type III), and part of the certified system of EPD as well.

The products with EPD certification will contribute to earning points in "LEED v4 MR Credit Building Product Disclosure and Optimization" - Environmental Product Declarations".

ECO LEAF-certified products

<Products in stock>

Altglan GX-3800 (p.52) , Sokoitari Classic GX-7900 (p.76)



Breathflora

Scenic beauty of flowers in bloom are expressed in bright and elegant colors. Dynamic pattern in 1m x 1m size will create a classy and gorgeous floor image.



Monolithic



GX6251L



Quarter turn

 GX6254L



Monolithic

 GX6252L • TTN3205 (Loose-Lay Tile)

Breathflora ^{NEW}

LARGE SQUARE
 1000×1000

GX-6250L

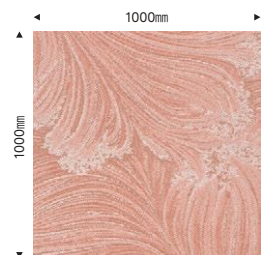
- Composition Pile – BCF Nylon 100% (Solution Dyed Nylon)
 Backing – PVC and Glass Fiber
- Specification Pile height – H8mm to L3mm
 Textured loop pile
 Overall thickness – 10.5mm
 Size – 1000mm x 1000mm
 Pile density – 1/10 gauge 20.0 stitch
 Packing – 4pcs/box = 4m²
 Method – Loose-lay method (Tackifier adhesive)

Flame-retardant / Fire Defense Law in Japan Authorized No.E2240080
 Antistatic / Charged voltage of human body – 1.0kv or less
 (JIS L 1021-16 : 23 °C, 25%RH, synthetic rubber sole)

- Stain-resistant / Fluorine-resin finish
- Due to the characteristics of the design, there may be a level difference of piles at seams.
 - Can be installed either in quarter turn or monolithic direction.



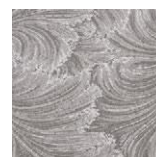
GX6251L



GX6251L **NEW**



GX6252L **NEW**



GX6253L **NEW**



GX6254L **NEW**

Grand flow

Dynamic pattern in 1000mm x 1000mm size creating spacious effect. Magnificent flowing image is well described by marbling method.



Quarter turn
↑ →
← ↓ GX6151L



**LARGE
SQUARE**
1000×1000

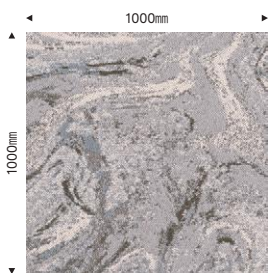
Grand flow

GX-6150L

- Composition Pile – BCF Nylon 100% (Solution Dyed Nylon)
 Backing – PVC and Glass Fiber
- Specification Pile height – H7.5mm to L3mm
 Textured loop pile
 Overall thickness – 9.5mm
 Size – 1000mm×1000mm
 Pile density – 1/10 gauge 20.0 stitch
 Packing – 4pcs/box = 4㎡
 Method – Loose-lay method (Tackifier adhesive)

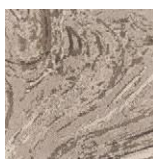
Flame-retardant / Fire Defense Law in Japan Authorized No.E2210057
 Antistatic / Charged voltage of human body – 1.0kv or less
 (JIS L 1021-16 : 23 °C, 25%RH, synthetic rubber sole)
 Stain-resistant / Stain Release (NANO CLEAN)* For more information on
 NANO CLEAN, please refer to page 18.

- Due to the characteristics of the design, there may be a level difference of piles at seams.
 - Can be installed either in quarter turn or monolithic direction.
- ※ Design Registered



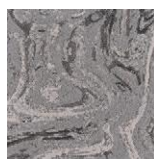
GX6151L

NANO CLEAN



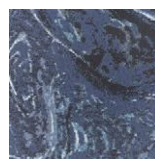
GX6152L

NANO CLEAN



GX6153L

NANO CLEAN



GX6154L

NANO CLEAN



GX6151L

With time

Rich texture and beautiful color mixture will convey the feeling of aged natural beauty.

MT-3350 (made-to-order product)

Deep shading image is created by embossing on the top of WITH TIME <GX-3350>.



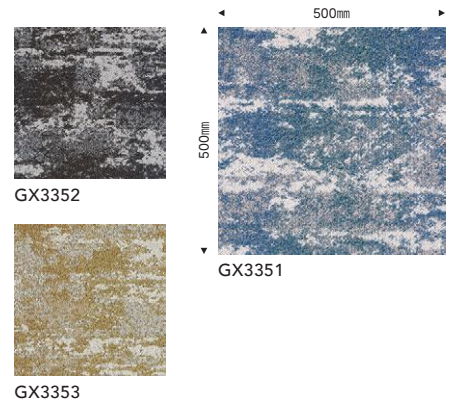
With time

GX-3350

Composition Pile – BCF Nylon 100% (Solution Dyed Nylon)
 Backing – PVC and Glass Fiber

Specification Pile height – H7mm to L3mm
 Textured loop pile
 Overall thickness – 9.5mm
 Size – 500mm×500mm
 Pile density – 1/10 gauge 16.5 stitch
 Packing – 16pcs/box = 4m²
 Method – Loose-lay method (Tackifier adhesive)

Flame-retardant / Fire Defense Law in Japan Authorized No.E2210061
 Antistatic / Charged voltage of human body – 1.0kv or less
 (JIS L 1021-16 : 23 °C, 25%RH, synthetic rubber sole)
 Stain-resistant / Fluorine-resin finish



- Due to the characteristics of the design, there may be a level difference of piles at seams.
- Can be installed either in quarter turn or monolithic direction.



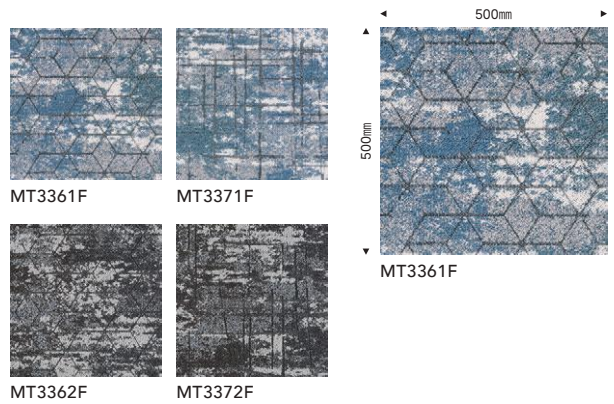
MT-3350 made-to-order product

Order conditions Minimum order quantity – 1 m²/color or more
 Lead time – [below 50m²] 1 week+ after an order
 [50m² or over] 3 weeks+ after an order
 ※ If the ordering quantity is large, it may require extra lead time.
 ※ The delivery time may be extended depending on your order quantity.

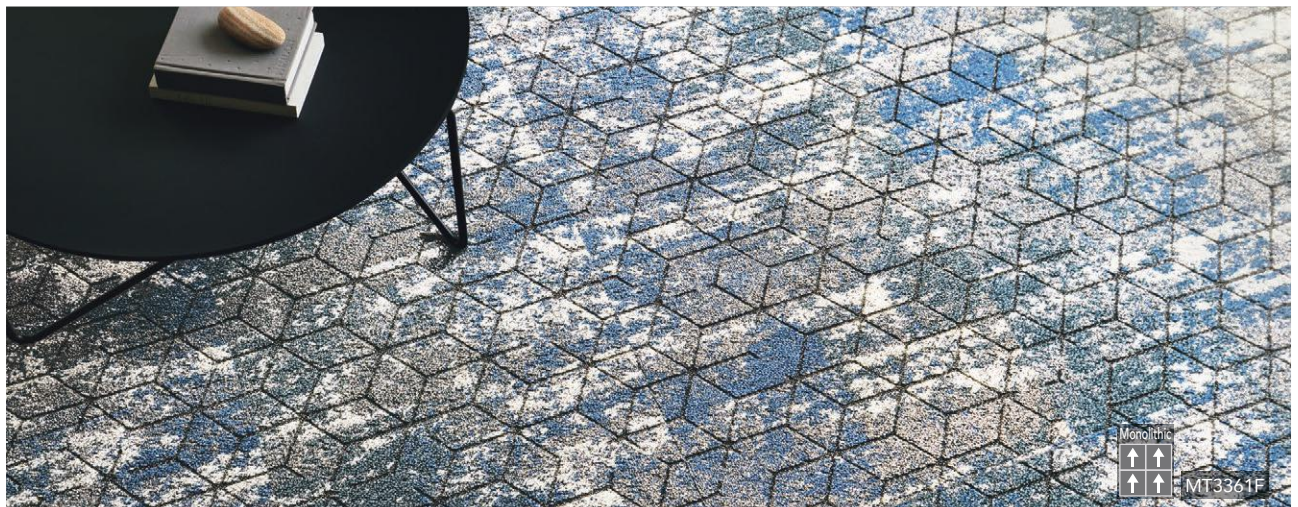
Composition Pile – BCF Nylon 100% (Solution Dyed Nylon)
 Backing – PVC and Glass Fiber

Specification Pile height – H7mm to L3mm
 Textured loop pile with special embossing
 Overall thickness – 9.5mm
 Size – 500mm×500mm
 Pile density – 1/10 gauge 16.5 stitch
 Packing – 16pcs/box = 4m²
 Method – Loose-lay method (Tackifier adhesive)

Flame-retardant / Fire Defense Law in Japan Authorized No.E2210060
 Antistatic / Charged voltage of human body – 1.0kv or less
 (JIS L 1021-16 : 23 °C, 25%RH, synthetic rubber sole)
 Stain-resistant / Fluorine-resin finish



- Slight cracking may be found on the embossed part, which does not affect the quality of the product.
 - Melted parts on the surface piles have a hard texture. Please do not step without your shoes on.
 - Monolithic installation is the standard.
 - Coordination with With time [GX-3350] (above) is available. However, the color and texture may look slightly different by such installation.
- ※ Design Registered



Foggyrock

Natural-look design inspired by the rock surface with unique color shading. Various floor images can be created not only by selecting one single color but by the combination of multiple colors.



※For FOGGYROCK, the color numbers ending with 2/4/6/8 have gradation in one tile. The gradation is basically described in a vertical direction to the arrow on the back, and there are some variations for that.



Foggyrock ^{NEW}

GX-4800

Composition Pile – BCF Nylon 100% (Solution Dyed Nylon)
 Backing – PVC and Glass Fiber

Specification Pile height – H7mm to L3mm

Textured loop pile

Overall thickness – 10mm

Size – 500mm×500mm

Pile density – 1/10 gauge 15.0 stitch

Packing – 16pcs/box = 4㎡

Method – Loose-lay method (Tackifier adhesive)

Flame-retardant / Fire Defense Law in Japan Authorized No.E2240079

Antistatic / Charged voltage of human body – 1.0kv or less

(JIS L 1021-16 : 23 °C, 25%RH, synthetic rubber sole)

Stain-resistant / Fluorine-resin finish

● Can be installed either in quarter turn or monolithic direction

● The combination of multiple colors can also work.

Due to the difference of design and batch, the colors may not strictly match.

Monolithic Quarter turn



the same color tone

GX4801	GX4802 · GX4808
GX4802	GX4801 · GX4803
GX4803	GX4802 · GX4804
GX4804	GX4803 · GX4805
GX4805	GX4804 · GX4806
GX4806	GX4805 · GX4807
GX4807	GX4806 · GX4808
GX4808	GX4801 · GX4807

For FOGGYROCK, the color numbers ending with 2/4/6/8 have gradation in one tile.

The gradation is basically described in a vertical direction to the arrow on the back, and there are some variations for that.

The color numbers in the left chart can be coordinated in the same color tone. Due to different production lots, there may be slight color differences.



Mortarclay

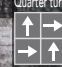

Very unique design inspired by mortar.
MORTARCLAY is characterized by its subtle color gradation.





Quarter turn
 GX3705 · GX3707



Quarter turn
 GX3701
 Ashlar
 GX9052V · GX9053V

Mortarclay

GX-3700

Composition Pile – BCF Nylon 100% (Solution Dyed Nylon)
 Backing – PVC and Glass Fiber

Specification Pile height – H6mm to L3mm
 Textured loop pile
 Overall thickness – 8.5mm
 Size – 500mm×500mm

Pile density – 1/10 gauge 11.5 stitch

Packing – 16pcs/box = 4m²

Method – Loose-lay method (Tackifier adhesive)

Flame-retardant / Fire Defense Law in Japan Authorized No.E2150026

Antistatic / Charged voltage of human body – 1.0kv or less
 (JIS L 1021-16 : 23 °C, 25%RH, synthetic rubber sole)

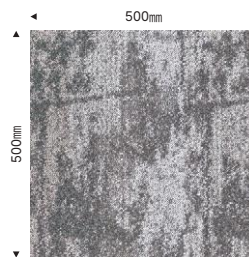
Stain-resistant / Fluorine-resin finish

● The color shading differs on a tile-by-tile basis. In case you do not feel comfortable about the floor after installation, relocate the tiles partly so that it will look natural.

● Can be installed either in quarter turn or monolithic direction.

※ Design Registered

Monolithic Quarter turn



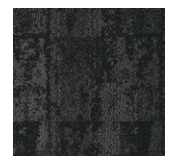
GX3701



GX3705



GX3702



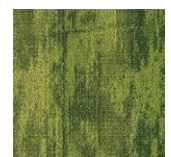
GX3706



GX3708



GX3707



GX3709

Srone

SRONE's dynamic stone-look pattern will create a daring but sophisticated feeling in your space.





Ashlar
→
→
→
→
GX9051V • GX9052V



Ashlar
→
→
→
→
GX9051V • GX9052V • GX9053V

Srone

GX-9050V

Composition Pile – BCF Nylon 100% (Solution Dyed Nylon)

Backing – PVC and Glass Fiber

Specification Pile height – H6mm to L3mm

Textured loop pile

Overall thickness – 8mm

Size – 250mm×1000mm

Pile density – 1/12 gauge 11.0 stitch

Packing – 12pcs/box = 3m²

Method – Loose-lay method (Tackifier adhesive)

Flame-retardant / Fire Defense Law in Japan Authorized No.E2150034

Antistatic / Charged voltage of human body – 1.0kv or less

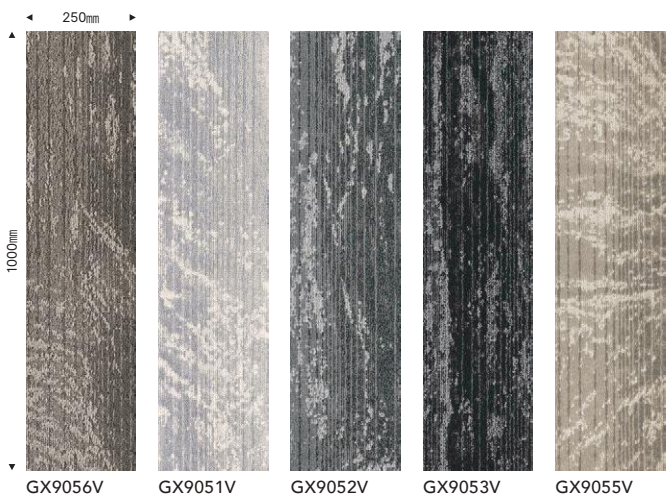
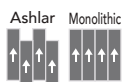
(JIS L 1021-16 : 23 °C, 25%RH, synthetic rubber sole)

Stain-resistant / Fluorine-resin finish

- The color shading differs on a tile-by-tile basis. In case you do not feel comfortable about the floor after installation, relocate the tiles partly so that it will look natural.

- Ashlar Installation is recommendable. (Monolithic Installation can also work.)

※ Design Registered





Plaid way

The street scene from the air is abstractly described. The dynamic lattice pattern with a beautiful contrast will highlight the space.



Monolithic



GX3451 • GX3452



Plaid way ^{NEW}

GX-3450

Composition Pile – BCF Nylon 100% (Solution Dyed Nylon)

Backing – PVC and Glass Fiber

Specification Pile height – H7mm to L3mm

Textured loop pile

Overall thickness – 9.3mm

Size – 500mm×500mm

Pile density – 1/10 gauge 16.0 stitch

Packing – 16pcs/box = 4m²

Method – Loose-lay method (Tackifier adhesive)

Flame-retardant / Fire Defense Law in Japan Authorized No.E2240106

Antistatic / Charged voltage of human body – 1.0kv or less

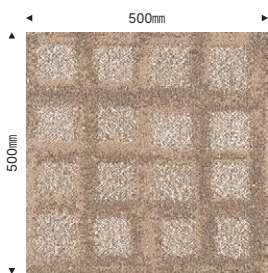
(JIS L 1021-16 : 23 °C, 25%RH, synthetic rubber sole)

Stain-resistant / Fluorine-resin finish

● The color shading differs on a tile-by-tile basis. In case you do not feel comfortable about the floor after installation, please change the tiles partly so that it will look natural.

● We recommend monolithic installation. (It can also be installed in quarter turn.)

Monolithic Quarter turn



GX3451 ^{NEW}



GX3452 ^{NEW}



GX3453 ^{NEW}



GX3454 ^{NEW}



Foldshape

Beautiful diagonal image of layered papers is well expressed with delicate color shading. Its sharp silhouette will create a modern sophisticated place.



Monolithic
↑↑
↑↑
GX3251 · GX3252



Foldshape^{NEW}

GX-3250

Composition Pile – BCF Nylon 100% (Solution Dyed Nylon)

Backing – PVC and Glass Fiber

Specification Pile height – H6mm to L3mm

Textured loop pile

Overall thickness – 9.5mm

Size – 500mm×500mm

Pile density – 1/10 gauge 16.0 stitch

Packing – 16pcs/box = 4㎡

Method – Loose-lay method (Tackifier adhesive)

Flame-retardant / Fire Defense Law in Japan Authorized No.E2240091

Antistatic / Charged voltage of human body – 1.0kv or less

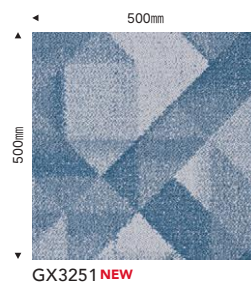
(JIS L 1021-16 : 23 °C, 25%RH, synthetic rubber sole)

Stain-resistant / Fluorine-resin finish

● Due to its 3-dimensional texture, the level difference might be caused on the joints of tiles. This is part of the pattern and not a manufacturing defect.

● Can be installed either in quarter turn or monolithic direction.

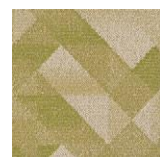
Monolithic Quarter turn



GX3252^{NEW}



GX3253^{NEW}



GX3254^{NEW}



GX3255^{NEW}


Geoslant

Beautiful geometric pattern in the motif of randomly-painted concrete with vivid colors.



Monolithic
↑↑
↑↑
GX4131 · GX4134



Monolithic
 GX4131 · GX4132

Geoslant

GX-4100

Composition Pile – BCF Nylon 100% (Solution Dyed Nylon)
 Backing – PVC and Glass Fiber

Specification Pile height – H5mm to L3mm
 Textured loop pile

Overall thickness – 8.5mm

Size – 500mm×500mm

Pile density – 1/12 gauge 13.0 stitch

Packing – 16pcs/box = 4㎡

Method – Loose-lay method (Tackifier adhesive)

Flame-retardant / Fire Defense Law in Japan Authorized No.E2180249

Antistatic / Charged voltage of human body – 1.0kv or less

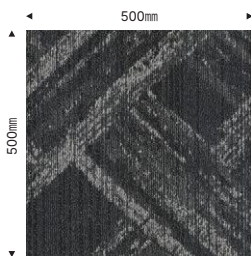
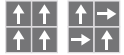
(JIS L 1021-16 : 23 °C, 25%RH, synthetic rubber sole)

Stain-resistant / Fluorine-resin finish

- To have a natural image after installation, stripes are intentionally inserted in the design at regular intervals, which is not a manufacturing defect. In case you do not feel comfortable about the floor after installation, please change the tiles partly so that it will look natural.
- We recommend monolithic installation. (It can also be installed in quarter turn.)

※ Design Registered

Monolithic Quarter turn



GX4131



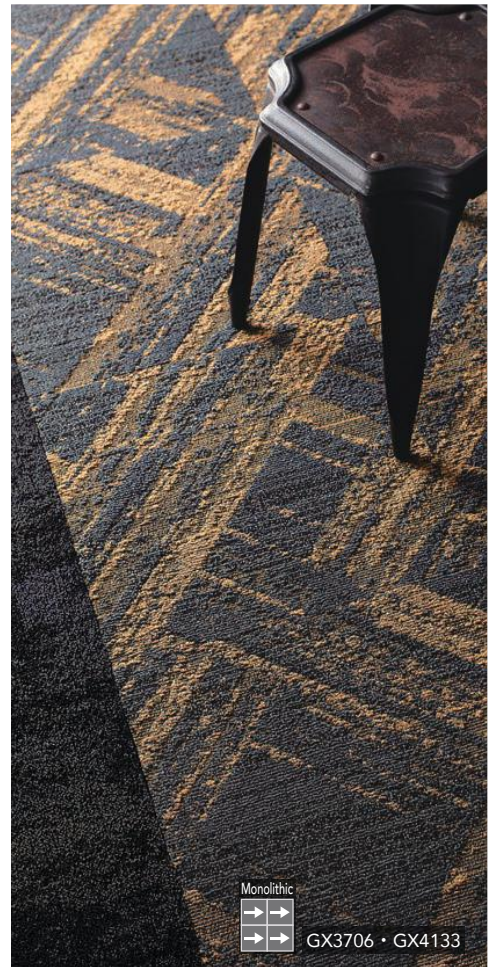
GX4133



GX4132



GX4134



Monolithic
 GX3706 · GX4133



Aqualuce

The change from calm water surface to wave splash is expressed by 3 different designs of the same color. The combination of 3 color codes will create dynamic scenic beauties of the sea surface.



GX4411 · GX4412 · GX4413



Aqualuce ^{NEW}

GX-4400

Composition Pile – BCF Nylon 100% (Solution Dyed Nylon)

Backing – PVC and Glass Fiber

Specification Pile height – H6mm to L3mm

Textured loop pile

Overall thickness – 8.5mm

Size – 500mm×500mm

Pile density – 1/10 gauge 13.5 stitch

Packing – 16pcs/box = 4㎡

Method – Loose-lay method (Tackifier adhesive)

Flame-retardant / Fire Defense Law in Japan Authorized No.E2240092

Antistatic / Charged voltage of human body – 1.0kv or less

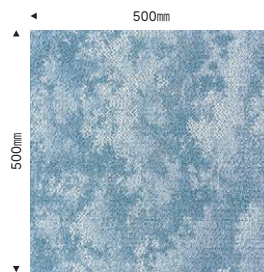
(JIS L 1021-16 : 23 °C, 25%RH, synthetic rubber sole)

Stain-resistant / Fluorine-resin finish

● We recommend monolithic installation. (It can also be installed in quarter turn.)

● The 1st digit 1 to 3 of the same color tone can be installed together as the combination. Due to the difference of design and batch, the colors may not strictly match.

Monolithic Quarter turn



GX4411 ^{NEW}

※ In the room scene image, carpet tiles are installed in the direction of arrow mark.

※ When you install the tiles, make sure their direction.

※ The color codes with the 1st digit 1 & 2 have designs of wave splash. In monolithic installation, the tiles look like the wave is splashing from right to left.



GX4411 ^{NEW}



GX4412 ^{NEW}



GX4413 ^{NEW}



GX4421 ^{NEW}



GX4422 ^{NEW}



GX4423 ^{NEW}



GX4431 ^{NEW}



GX4432 ^{NEW}



GX4433 ^{NEW}

Luceart

LUCEART conveys the image of natural scenery sparkling with light reflection. Its color mixture and uneven texture can create a rich expression.



Monolithic
↑↑
↑↑
GX8504 · GX8505



Monolithic
 ↑↑
 ↑↑
 ↑↑
 GX8502 - GX8504

Luceart

GX-8500

Composition Pile – BCF Nylon 100% (Solution Dyed Nylon)

Backing – PVC and Glass Fiber

Specification Pile height – H6.5mm to L3mm

Textured loop pile

Overall thickness – 9.3mm

Size – 500mm×500mm

Pile density – 1/10 gauge 16.0 stitch

Packing – 16pcs/box = 4㎡

Method – Loose-lay method (Tackifier adhesive)

Flame-retardant / Fire Defense Law in Japan Authorized No.E2150033

Antistatic / Charged voltage of human body – 1.0kv or less

(JIS L 1021-16 : 23 °C, 25%RH, synthetic rubber sole)

Stain-resistant / Fluorine-resin finish

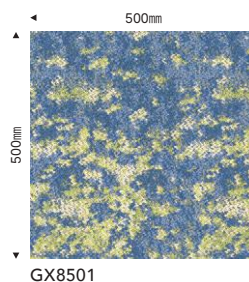
● The color shading differs on a tile-by-tile basis. In case you do not feel comfortable about the floor after installation, relocate the tiles partly so that it will look natural.

● Can be installed either in quarter turn or monolithic direction.

※ Design Registered



GX8501



GX8501



GX8502



GX8503



GX8504



GX8505



GX8502 has soft stripes. Interchanging the tiles will produce a different expression.



Link space

Japanese KASURI image will nicely fit in your space. Combination of 3 color codes can create a moderate gradation on the floor.



GX9981V • GX9982V • GX9983V



GX9961V · GX9962V · GX9963V

Link space



GX-9950V

Composition Pile – BCF Nylon 100% (Solution Dyed Nylon)
Backing – PVC and Glass Fiber

Specification Pile height – H5.5mm to L3mm
Textured loop pile

Overall thickness – 8mm

Size – 250mm×1000mm

Pile density – 1/12 gauge 11.5 stitch

Packing – 12pcs/box = 3㎡

Method – Loose-lay method (Tackifier adhesive)

Flame-retardant / Fire Defense Law in Japan Authorized No.E2210159

Antistatic / Charged voltage of human body – 1.0kv or less

(JIS L 1021-16 : 23 °C, 25%RH, synthetic rubber sole)

Stain-resistant / Fluorine-resin finish

● The color shading differs on a tile-by-tile basis. In case you do not feel comfortable about the floor after installation, relocate the tiles partly so that it will look natural.

● For the way of installation, both Monolithic and Ashlar can work.

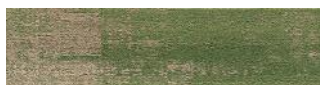
※ Design Registered (GX9962V · GX9972V · GX9982V)



GX9971V · GX9972V · GX9973V



GX9981V



GX9982V



GX9983V



GX9971V



GX9972V



GX9973V



GX9961V



GX9962V



GX9963V



GX9981V

Diffebriller II

Classy pattern inspired by fine sparkles on the water surface. Sheer persistence to yarn texture and chromogenic effect will provide a premium feel.



GX96504V



GX4808



GX96501V • GX96505V

Diffebriller II ^{NEW}



GX-96500V

Composition Pile – BCF Nylon 100% (Solution Dyed Nylon)

Backing – PVC and Glass Fiber

Specification Pile height – H5mm to L3mm

Textured loop pile (tip sheared)

Overall thickness – 8mm

Size – 250mm × 1000mm

Pile density – 1/10 gauge 11.0 stitch

Packing – 12 pcs/box = 3㎡

Method – Loose-lay method (Tackifier adhesive)

Flame-retardant / Fire Defense Law in Japan Authorized No.E2240083

Antistatic / Charged voltage of human body – 1.0kv or less

(JIS L 1021-16 : 23 °C, 25%RH, synthetic rubber sole)

Stain-resistant / Fluorine-resin finish

- The color shading differs on a tile-by-tile basis. In case you do not feel comfortable about the floor after installation, relocate the tiles partly so that it will look natural.

- Occasionally the direction of tip sheared piles are partly broken in part, which looks like color shading. This is one of the characteristics of tip sheared carpets and not a manufacturing defect.

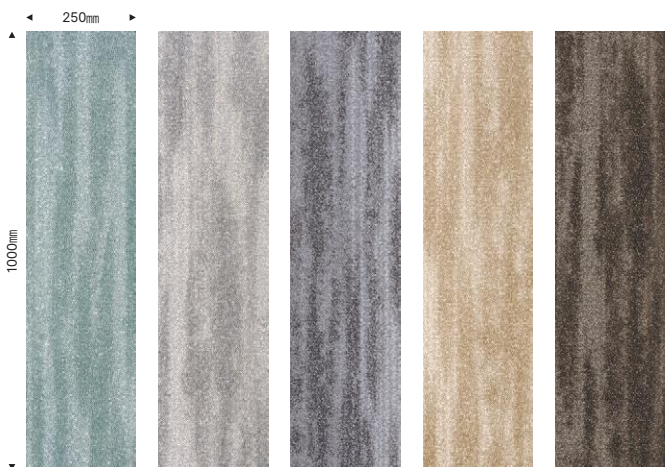
- Ashlar Installation is recommendable. (Monolithic Installation can also work.)

※Design Registered

Ashlar Monolithic



GX96505V



GX96505V ^{NEW} GX96501V ^{NEW} GX96502V ^{NEW} GX96503V ^{NEW} GX96504V ^{NEW}



Rock garden

Series of 3-dimensional random stone images will inspire the cobblestone lane. Broad and dynamic floor designs can be created.



Monolithic



GX4212

Ashlar



GX9251V · GX9252V



Rock garden



GX-9250V

Composition Pile – BCF Nylon 100% (Solution Dyed Nylon)
 Backing – PVC and Glass Fiber

Specification Pile height – H8mm to L3mm
 Textured loop pile
 Overall thickness – 9.3mm

Size – 250mm×1000mm
 Pile density – 1/10 gauge 14.0 stitch
 Packing – 12pcs/box = 3㎡

Method – Loose-lay method (Tackifier adhesive)

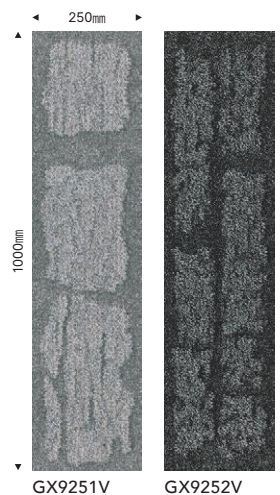
Flame-retardant / Fire Defense Law in Japan Authorized No.E2180254

Antistatic / Charged voltage of human body – 1.0kv or less
 (JIS L 1021-16 : 23 °C, 25%RH, synthetic rubber sole)

Stain-resistant / Fluorine-resin finish

● Ashlar Installation is recommendable. (Monolithic Installation can also work.)

※Design Registered



GX9251V

GX9252V

Prarie

Natural grass-look design and texture. Relaxing spaces can be instantly created in the offices and the commercial facilities.



Monolithic
↑ ↑
↑ ↑
GX4211 · GX4212



GX4211 • GX4212



TTN3113 (Loose-Lay Tile)

Prarie

GX-4200

Composition Pile – BCF Nylon 100% (Solution Dyed Nylon)
 Backing – PVC and Glass Fiber

Specification Pile height – H8mm / L3.5mm

Cut and loop pile

Overall thickness – 9.3mm

Size – 500mm×500mm

Pile density – 1/10 gauge 9.5 stitch

Packing – 16pcs/box = 4㎡

Method – Loose-lay method (Tackifier adhesive)

Flame-retardant / Fire Defense Law in Japan Authorized No.E2180321

Antistatic / Charged voltage of human body – 1.0kv or less

(JIS L 1021-16 : 23 °C, 25%RH, synthetic rubber sole)

Stain-resistant / Fluorine-resin finish

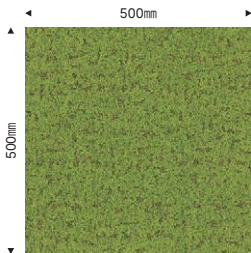
- Occasionally the direction of cut-piles are partly broken in part, which looks like color shading. This is one of the characteristics of cut-pile carpets and not a manufacturing defect.

- The color shading differs on a tile-by-tile basis. In case you do not feel comfortable about the floor after installation, please change the tiles partly so that it will look natural.

- We recommend monolithic installation. (It can also be installed in quarter turn.)

※ Design Registered

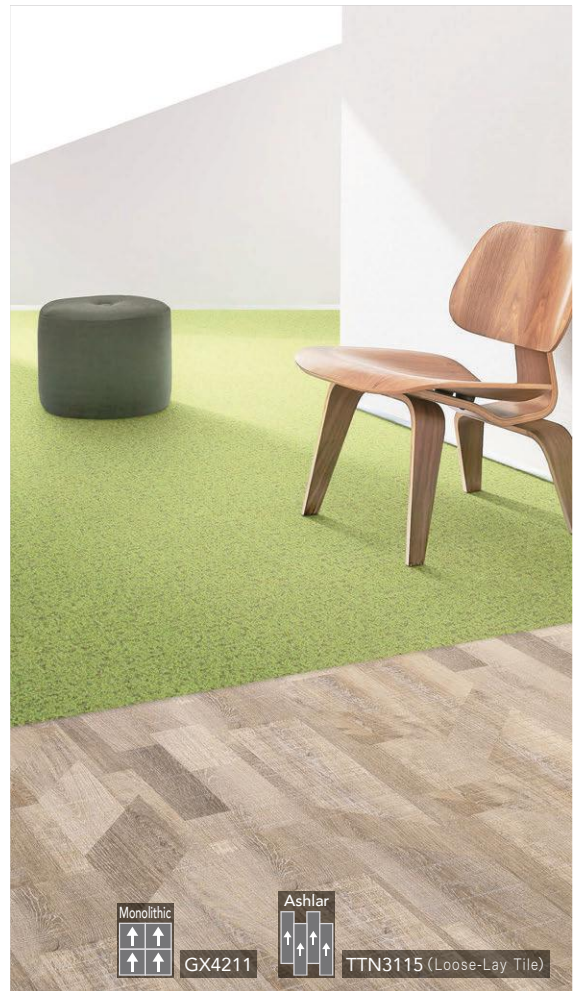
Monolithic Quarter turn



GX4211



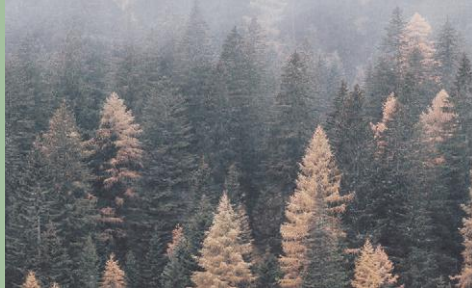
GX4212



GX4211



TTN3113 (Loose-Lay Tile)



Haze peak

Subtle diagonal lines on the top of natural-looking color shading and texture.



Monolithic
↑↑
↑↑
GX3153 • TTN3213 (Loose-Lay Tile)



Haze peak

GX-3150

Composition Pile – BCF Nylon 100% (Solution Dyed Nylon)

Backing – PVC and Glass Fiber

Specification Pile height – H5.5mm to L3mm

Textured loop pile

Overall thickness – 8mm

Size – 500mm×500mm

Pile density – 1/12 gauge 11.5 stitch

Packing – 16pcs/box = 4㎡

Method – Loose-lay method (Tackifier adhesive)

Flame-retardant / Fire Defense Law in Japan Authorized No.E2210058

Antistatic / Charged voltage of human body – 1.0kv or less

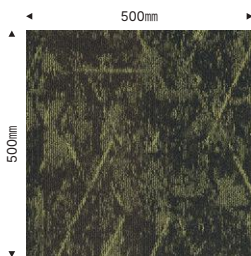
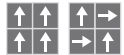
(JIS L 1021-16 : 23 °C, 25%RH, synthetic rubber sole)

Stain-resistant / Fluorine-resin finish

● Due to the characteristics of the design, there may be a level difference of piles at seams.

● Can be installed either in quarter turn or monolithic direction.

Monolithic Quarter turn



GX3153



GX3151



GX3152



GX3155



GX3153

Altglan

Overlapped leaves glittering in the sunshine is well described by expressive deep color tones and delicate texture.

MT-3800 (made-to-order product)

Organic-look embossing is put on Altglan (GX-3800) to create a scene of nature.



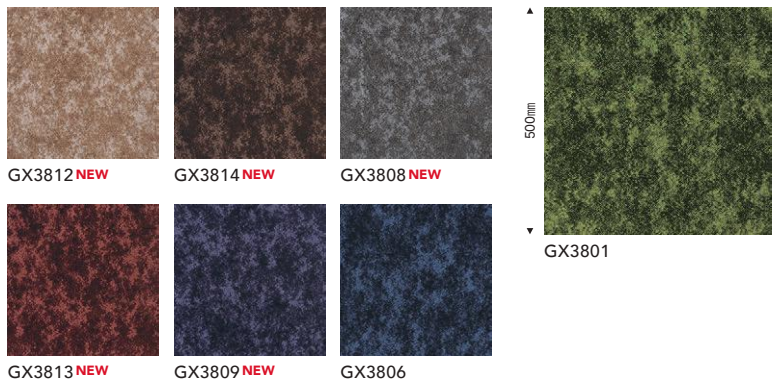
Altglan

GX-3800

Composition Pile – BCF Nylon 100% (Solution Dyed Nylon)
 Backing – PVC and Glass Fiber (Sustive Back)

Specification Pile height – H5.5mm to L3mm
 Textured loop pile (tip sheared)
 Overall thickness – 8.5mm
 Size – 500mm×500mm
 Pile density – 1/10 gauge 12.0 stitch
 Packing – 16pcs/box = 4㎡
 Method – Loose-lay method (Tackifier adhesive)

Flame-retardant / Fire Defense Law in Japan Authorized No.E2150027
 Antistatic / Charged voltage of human body – 1.0kv or less (JIS L 1021-16 : 23 °C, 25%RH, synthetic rubber sole)
 Stain-resistant / Fluorine-resin finish



- The color shading differs on a tile-by-tile basis. In case you do not feel comfortable about the floor after installation, relocate the tiles partly so that it will look natural.
- Occasionally the direction of tip sheared piles are partly broken in part, which looks like color shading. This is one of the characteristics of tip sheared carpets and not a manufacturing defect.
- Avoid the installation at a lower temperature than 5 degrees Centigrade.
- We recommend monolithic installation. (It can also be installed in quarter turn.)



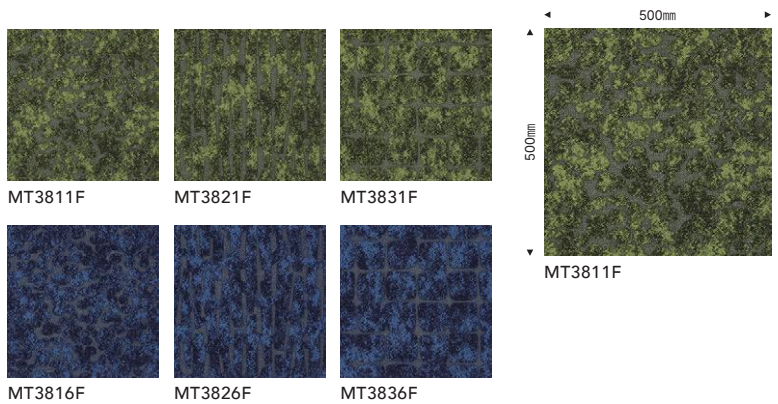
MT-3800 made-to-order product

Order conditions Minimum order quantity – 1㎡/color or more
 Lead time – [below 50㎡] 1 week+ after an order
 [50㎡ or over] 3 weeks+ after an order
 ※If the ordering quantity is large, it may require extra lead time.
 ※The delivery time may be extended depending on your order quantity.

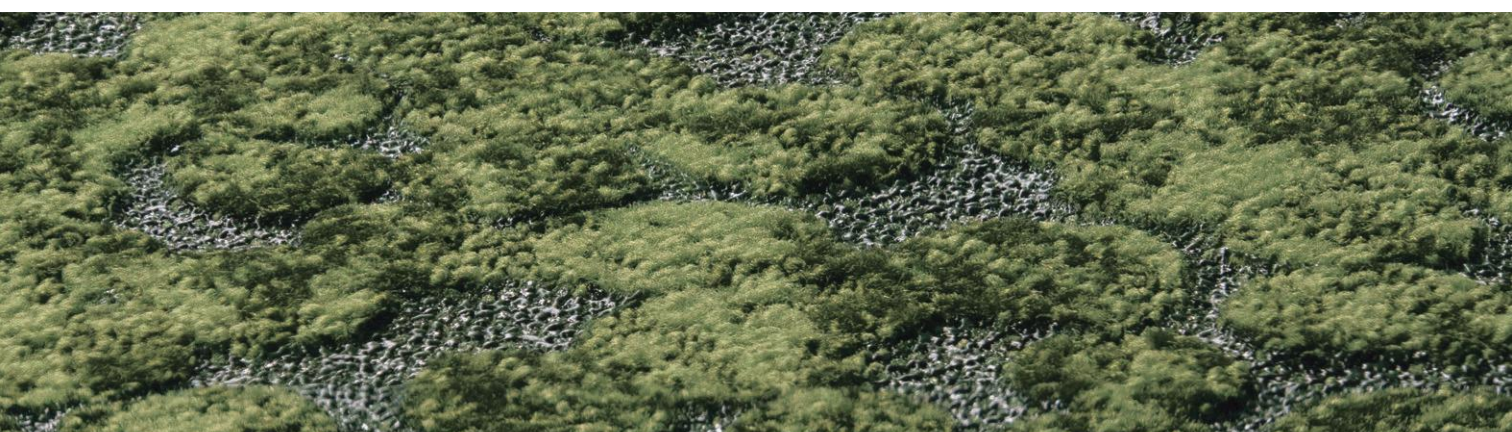
Composition Pile – BCF Nylon 100%
 Backing – PVC and Glass Fiber

Specification Pile height – H5.5mm to L3mm
 Textured loop pile (tip sheared) with special embossing
 Overall thickness – 8.5mm
 Size – 500mm×500mm
 Pile density – 1/10 gauge 12.0 stitch
 Packing – 16pcs/box = 4㎡
 Method – Loose-lay method (Tackifier adhesive)

Flame-retardant / Fire Defense Law in Japan Authorized No.E2180269
 Antistatic / Charged voltage of human body – 1.0kv or less (JIS L 1021-16 : 23 °C, 25%RH, synthetic rubber sole)
 Stain-resistant / Fluorine-resin finish



- Occasionally the direction of tip sheared piles are partly broken in part, which looks like color shading. This is one of the characteristics of tip sheared carpets and not a manufacturing defect.
- Slight cracking may be found on the embossed part, which does not affect the quality of the product.
- Melted parts on the surface piles have a hard texture. Please do not step without your shoes on.
- MT-3800 is using the same surface material as ALTGLAN, so the coordination with ALTGLAN is also workable.
- Monolithic installation is the standard.
- ※ Design Registered (MT3811F · MT3816F · MT3831F · MT3836F)



Resonance

Authentic wood-plank image is well converted into carpet tile form.





Resonance



GX-9700V

- Composition Pile – BCF Nylon 100% (Solution Dyed Nylon)
 Backing – PVC and Glass Fiber
- Specification Pile height – H4mm to L3mm
 Textured loop pile
 Overall thickness – 7.5mm
 Size – 250mm×1000mm
 Pile density – 1/12 gauge 11.5 stitch
 Packing – 12pcs/box = 3㎡
 Method – Loose-lay method (Tackifier adhesive)

Flame-retardant / Fire Defense Law in Japan Authorized No.E2120040
 Antistatic / Charged voltage of human body – 1.0kv or less
 (JIS L 1021-16 : 23 °C, 25%RH, synthetic rubber sole)
 Stain-resistant / Fluorine-resin finish

- The color shading differs on a tile-by-tile basis. In case you do not feel comfortable about the floor after installation, relocate the tiles partly so that it will look natural.
- For the way of installation, both Monolithic and Ashlar can work.



GX9702V

Monolithic Ashlar



GX9701V

GX9702V

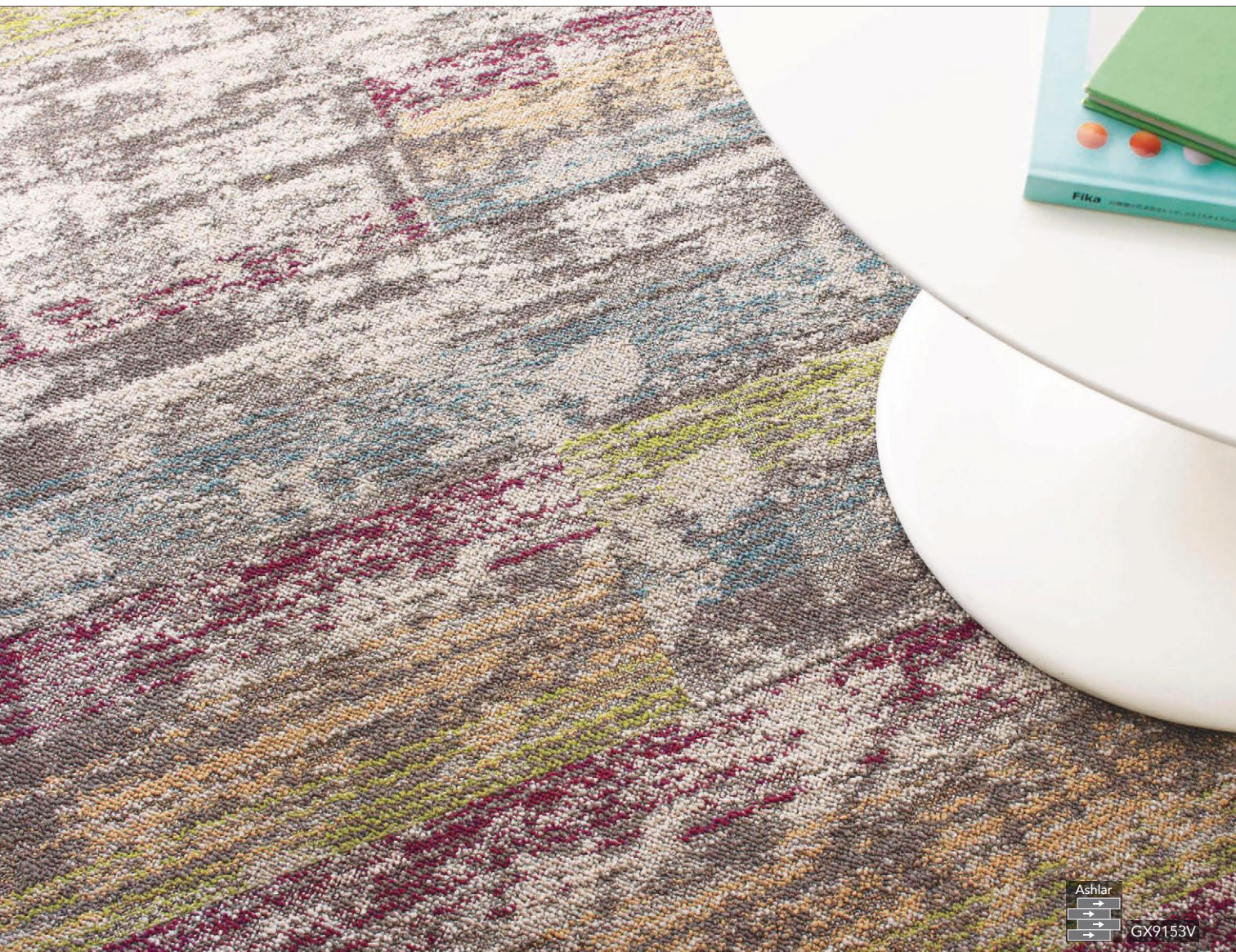


Veniche

Multi-colored rustic feeling of painted woods is very well expressed in VENICHE.



GX9151V • GX9152V



Veniche



GX-9150V

Composition Pile – BCF Nylon 100% (Solution Dyed Nylon)
 Backing – PVC and Glass Fiber

Specification Pile height – H5.5mm to L3mm
 Textured loop pile
 Overall thickness – 8.3mm
 Size – 250mm×1000mm
 Pile density – 1/10 gauge 11.0 stitch
 Packing – 12pcs/box = 3㎡
 Method – Loose-lay method (Tackifier adhesive)

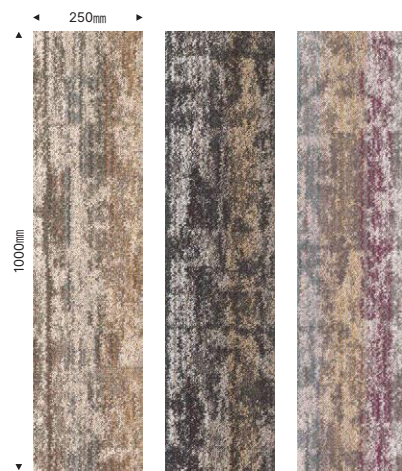
Flame-retardant / Fire Defense Law in Japan Authorized No.E2150035
 Antistatic / Charged voltage of human body – 1.0kv or less
 (JIS L 1021-16 : 23 °C, 25%RH, synthetic rubber sole)

Stain-resistant / Fluorine-resin finish

● The color shading differs on a tile-by-tile basis. In case you do not feel comfortable about the floor after installation, relocate the tiles partly so that it will look natural.

● Ashlar Installation is recommendable. (Monolithic Installation can also work.)

※ Design Registered



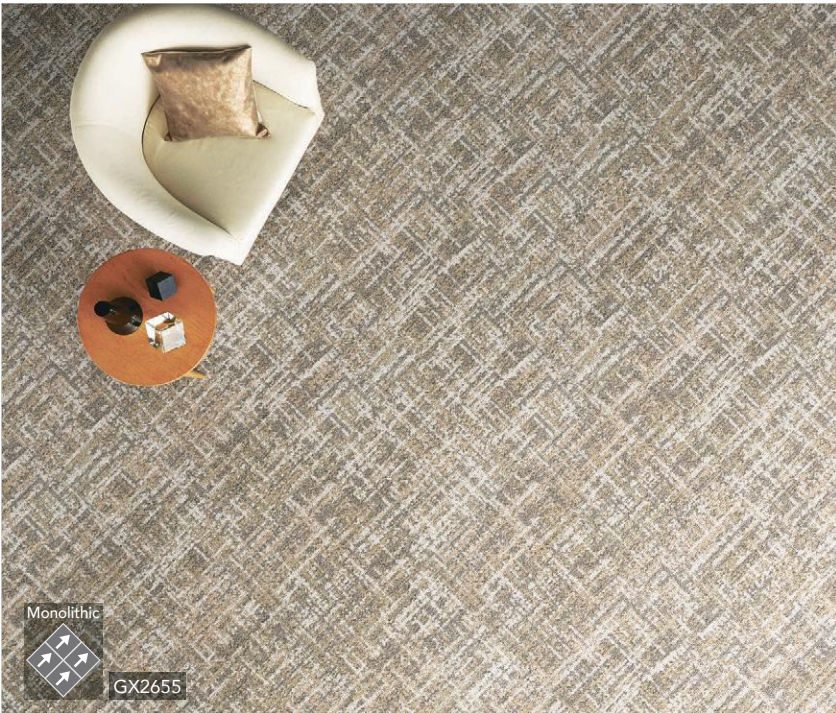
GX9151V

GX9152V

GX9153V

Waffle knit

The image of knit fabric - rough texture and yarn's overlapping are well expressed by high and low piles. Casual and warm feeling can be created in your space.





GX2656



TTN3122 (Loose-Lay Tile)

Waffle knit

GX-2650

Composition Pile – BCF Nylon 100% (Solution Dyed Nylon)

Backing – PVC and Glass Fiber

Specification Pile height – H8.5mm to L3mm

Textured loop pile

Overall thickness – 9.8mm

Size – 500mm×500mm

Pile density – 1/10 gauge 17.5 stitch

Packing – 16pcs/box = 4㎡

Method – Loose-lay method (Tackifier adhesive)

Flame-retardant / Fire Defense Law in Japan Authorized No.E2210059

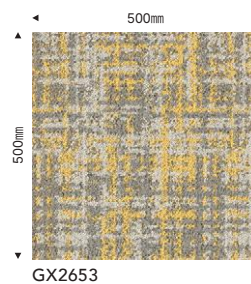
Antistatic / Charged voltage of human body – 1.0kv or less

(JIS L 1021-16 : 23 °C, 25%RH, synthetic rubber sole)

Stain-resistant / Fluorine-resin finish

● Due to the characteristics of the design, there may be a level difference of piles at seams.

● Can be installed either in quarter turn or monolithic direction.



GX2653



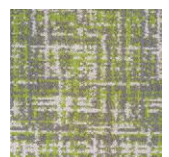
GX2651



GX2652



GX2655



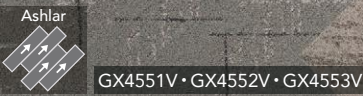
GX2656 NEW

Monolithic Quarter turn



Moroca line

Traditional Moroccan woven fabric is well modernized. It makes your space relaxing like a living room.





Ashlar
↑ ↑ ↑ ↑
GX4553V

GX4553V

Moroca line

GX-4550V

Composition Pile – BCF Nylon 100% (Solution Dyed Nylon)

Backing – PVC and Glass Fiber

Specification Pile height – H6mm to L3mm

Textured loop pile

Overall thickness – 9.3mm

Size – 250mm×1000mm

Pile density – 1/10 gauge 20.0 stitch

Packing – 12pcs/box = 3㎡

Method – Loose-lay method (Tackifier adhesive)

Flame-retardant / Fire Defense Law in Japan Authorized No.E2190078

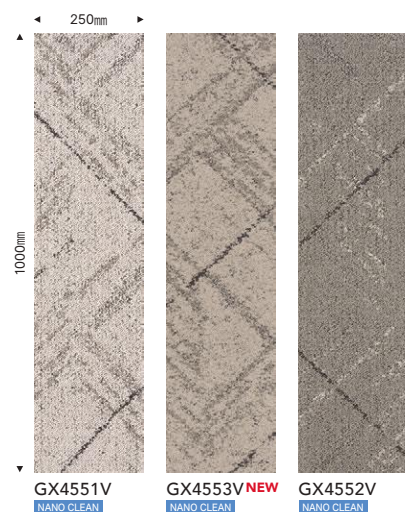
Antistatic / Charged voltage of human body – 1.0kv or less

(JIS L 1021-16 : 23 °C, 25%RH, synthetic rubber sole)

Stain-resistant / Stain Release (NANO CLEAN)* For more information on NANO CLEAN, please refer to page 18.

● Ashlar Installation is recommendable. (Monolithic Installation can also work.)

※ Design Registered



GX4551V
NANO CLEAN

GX4553V NEW
NANO CLEAN

GX4552V
NANO CLEAN

Ocash

High-quality texture made by shiny yarns and twisted yarns.
Its delicate contrast will create a classy atmosphere on the floor.



Monolithic
↑↑
↑↑
GX2405



Ocash

GX-2400

Composition Pile – BCF Nylon 100% (Solution Dyed Nylon)

Backing – PVC and Glass Fiber

Specification Pile height – H4mm to L3mm

Textured loop pile

Overall thickness – 7mm

Size – 500mm×500mm

Pile density – 1/8 gauge 11.5 stitch

Packing – 16pcs/box = 4㎡

Method – Loose-lay method (Tackifier adhesive)

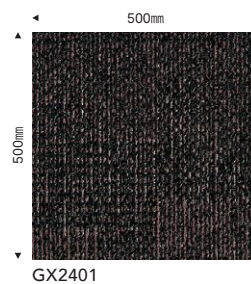
Flame-retardant / Fire Defense Law in Japan Authorized No.EO080040

Antistatic / Charged voltage of human body – 1.0kv or less

(JIS L 1021-16 : 23 °C, 25%RH, synthetic rubber sole)

Stain-resistant / Fluorine-resin finish

- To have a natural image after installation, stripes are intentionally inserted in the design at regular intervals, which is not a manufacturing defect. In case you do not feel comfortable about the floor after installation, please change the tiles partly so that it will look natural.
- We recommend monolithic installation. (It can also be installed in quarter turn.)



GX2401



GX2402



GX2404



GX2403



GX2405 NEW



Etrico

With its fine mixture of colored yarns as well as its soft texture of big loop piles, ETRICO will convey the feeling of high-class woven fabric like tweed.



Monolithic
↑↑
↑↑
GX8601 • TTN3205 (Loose-Lay Tile)



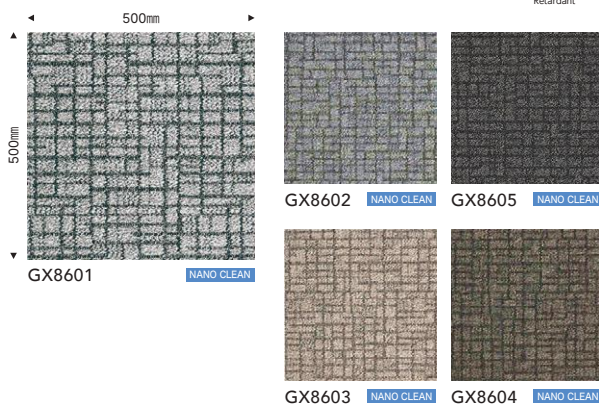
Etrico

GX-8600

- Composition Pile – BCF Nylon 100% (Solution Dyed Nylon)
 Backing – PVC and Glass Fiber
- Specification Pile height – H6mm to L3mm
 Textured loop pile
 Overall thickness – 8.5mm
 Size – 500mm×500mm
 Pile density – 1/10 gauge 13.5 stitch
 Packing – 16pcs/box = 4㎡
 Method – Loose-lay method (Tackifier adhesive)

Flame-retardant / Fire Defense Law in Japan Authorized No.E2160061
 Antistatic / Charged voltage of human body – 1.0kv or less
 (JIS L 1021-16 : 23 °C, 25%RH, synthetic rubber sole)
 Stain-resistant / Stain Release (NANO CLEAN)* For more information on NANO CLEAN, please refer to page 18.

- Due to the characteristics of the design, there may be a level difference of piles at seams.
- Right after installation, color shading could be seen on the floor. This is just because surface piles partially lie down. With the passage of time, it will disappear.
- Can be installed either in quarter turn or monolithic direction.





Latticloth

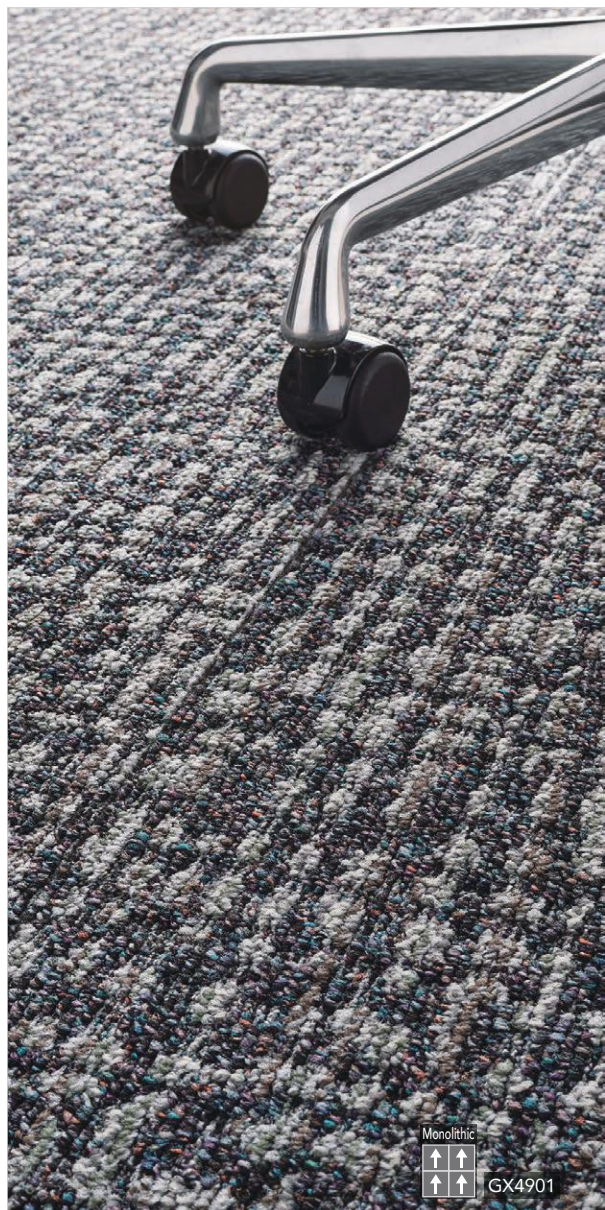
Classy lattice pattern like expressive woven fabric. Its beautiful texture and 3-dimensional feeling are highlighted by multi-colored yarns.



Monolithic
GX4901 • TTN3207 (Loose-Lay Tile)



GX4902 · GX4903



GX4901

Latticloth

GX-4900

Composition Pile – BCF Nylon 100% (Solution Dyed & Space Dyed)
Backing – PVC and Glass Fiber

Specification Pile height – H6mm to L3mm

Textured loop pile

Overall thickness – 8mm

Size – 500mm×500mm

Pile density – 1/12 gauge 11.0 stitch

Packing – 16pcs/box = 4㎡

Method – Loose-lay method (Tackifier adhesive)

Flame-retardant / Fire Defense Law in Japan Authorized No.E2180252

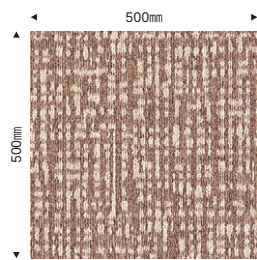
Antistatic / Charged voltage of human body – 1.0kv or less

(JIS L 1021-16 : 23 °C, 25%RH, synthetic rubber sole)

Stain-resistant / Fluorine-resin finish

● We recommend monolithic installation. (It can also be installed in quarter turn.)

※ Design Registered



GX4903



GX4902



GX4904



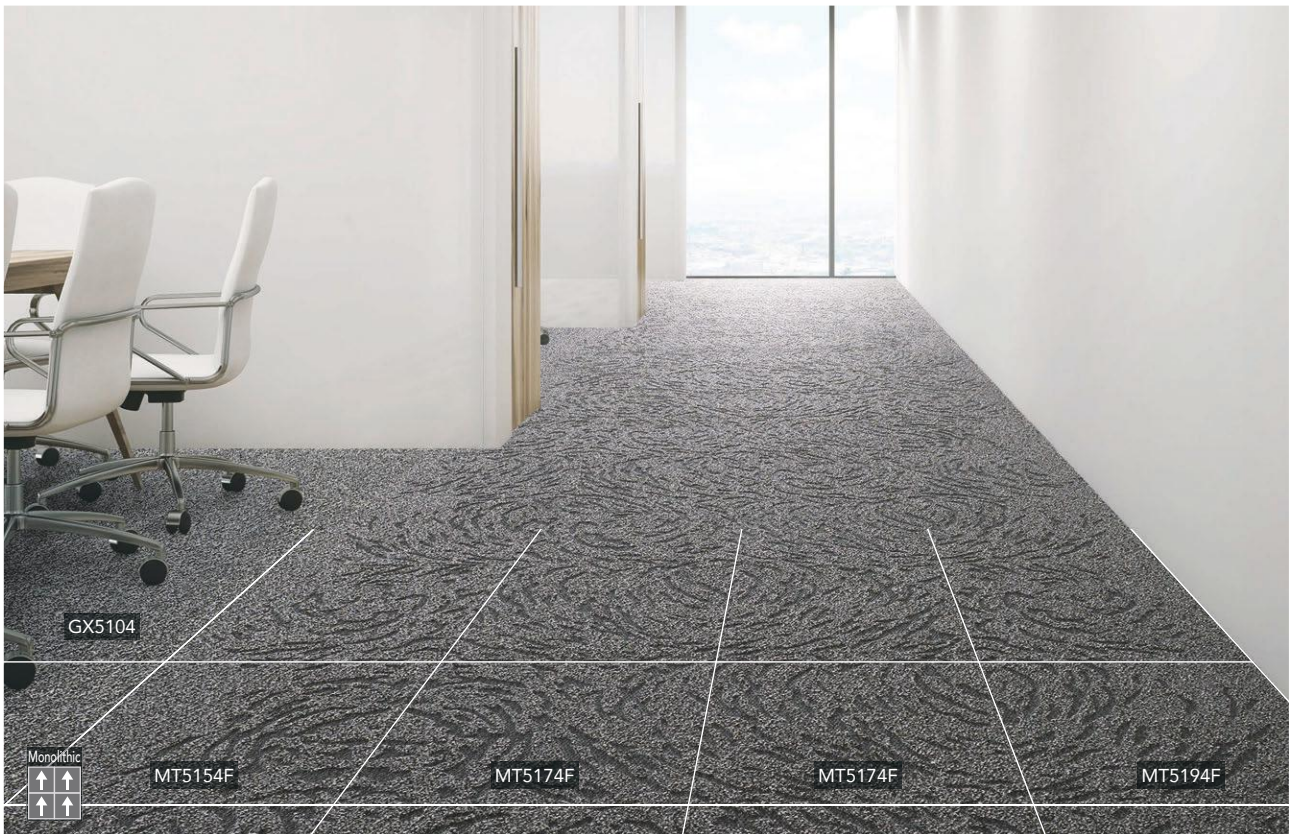
GX4901

Calmgrain

Rich volume of high and low loop piles, and beautiful mixture of deep-colored yarns --- with its high-end texture, CALMGRAIN will convey a sophisticated feeling in your space.

MT-5100 (made-to-order product)

Flowing fur image is boldly expressed by unique embossing. Can be installed together with CALMGRAIN <GX-5100>.





Calmgrain

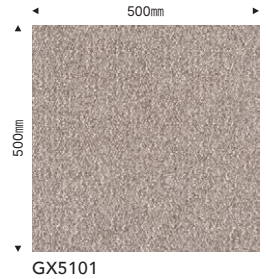
GX-5100

Composition Pile – BCF Nylon 100% (Solution Dyed Nylon)
 Backing – PVC and Glass Fiber

Specification Pile height – H6mm to L3mm
 Textured loop pile
 Overall thickness – 8mm
 Size – 500mm×500mm
 Pile density – 1/12 gauge 11.0 stitch
 Packing – 16pcs/box = 4㎡
 Method – Loose-lay method (Tackifier adhesive)

Flame-retardant / Fire Defense Law in Japan Authorized No.E2150029

Antistatic / Charged voltage of human body – 1.0kv or less (JIS L 1021-16 : 23 °C, 25%RH, synthetic rubber sole)
 Stain-resistant / Fluorine-resin finish



- The shadows of joints are sometimes visible, which is not a manufacturing defect.
- Right after installation, color shading could be seen on the floor. This is just because surface piles partially lie down. With the passage of time, it will disappear.
- We recommend monolithic installation. (It can also be installed in quarter turn.)



MT-5100 ^{NEW} made-to-order product

Order conditions Minimum order quantity – 1㎡/color or more
 Lead time – [below 50㎡] 1 week+ after an order
 [50㎡ or over] 3 weeks+ after an order

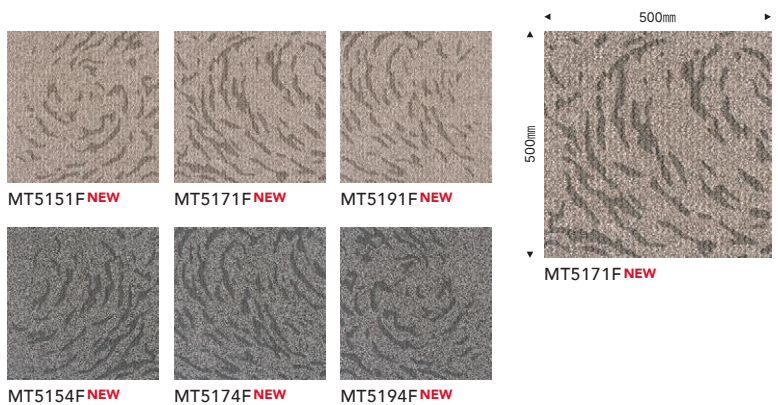
※ If the ordering quantity is large, it may require extra lead time.
 ※ The delivery time may be extended depending on your order quantity.

Composition Pile – BCF Nylon 100% (Solution Dyed Nylon)
 Backing – PVC and Glass Fiber

Specification Pile height – H6mm to L3mm
 Textured loop pile with special embossing
 Overall thickness – 8mm
 Size – 500mm×500mm
 Pile density – 1/12 gauge 11.0 stitch
 Packing – 16pcs/box = 4㎡
 Method – Loose-lay method (Tackifier adhesive)

Flame-retardant / Fire Defense Law in Japan Authorized No.E2180270

Antistatic / Charged voltage of human body – 1.0kv or less (JIS L 1021-16 : 23 °C, 25%RH, synthetic rubber sole)
 Stain-resistant / Fluorine-resin finish



The color numbers in the below chart can be coordinated in the same color tone.
 Minimum Order Qty is 1m2/color. (GX5101 and GX5104 are stocking colors.)

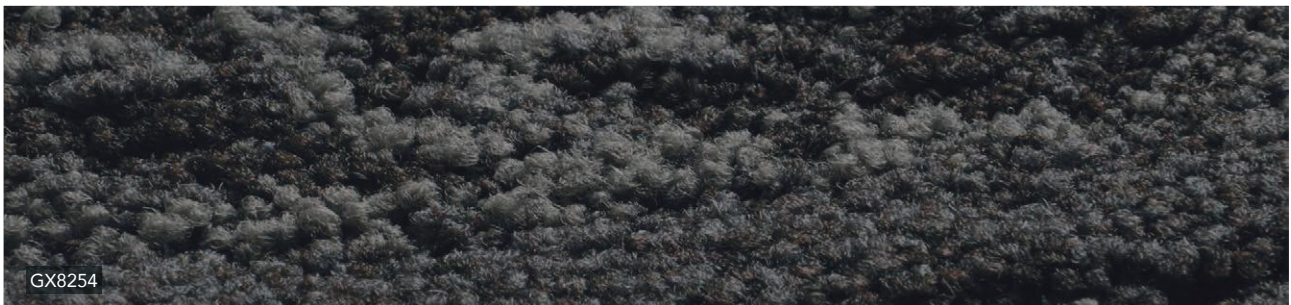
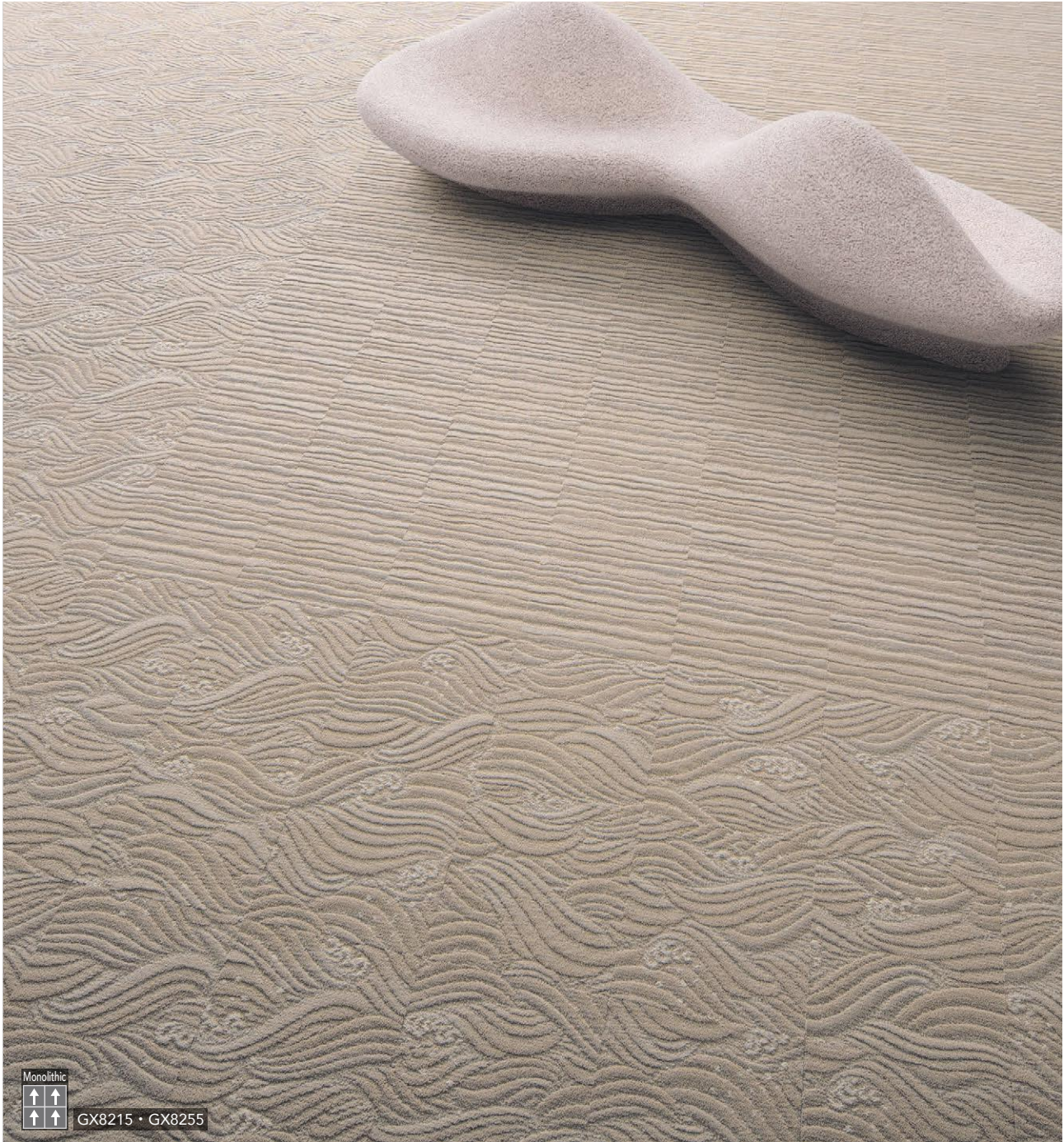
Plain	Left gradation	Base	Right gradation
GX5101 (Calmgrain)	MT5151F	MT5171F	MT5191F
GX5104 (Calmgrain)	MT5154F	MT5174F	MT5194F

- ※ The tiles should be installed in Monolithic way based on the direction of arrow marks on the back. Otherwise the pattern will not be smoothly connected.
- ※ For MT5151F, MT5154F, MT5171F, MT5174F, MT5191F, and MT5194F, there are 5 different designs each for the same one color code. In case you feel uncomfortable on the floor finish after the installation, partly relocate the tiles.
- ※ 5 different designs are randomly packed in one carton box. Specific designs cannot be chosen.
- ※ Even for the same color code, if the production lot is different, the color may not match.

- Slight cracking may be found on the embossed part, which does not affect the quality of the product.
- Melted parts on the surface piles have a hard texture. Please do not step without your shoes on.
- Monolithic installation is the standard.
- MT-5100 is using the same surface material as Calmgrain, so the coordination with Calmgrain is also workable.

Sokoitari Soundscape

Stylish flowing wave images are created by fine gradation and 3-dimensional carving.
Won the prize of 'GOOD DESIGN AWARD'





Monolithic

 GX8212 · GX8252



Monolithic

 GX8217 · GX8255 · GX8257

Sokoitari Soundscape

GX-8200

Composition Pile – BCF Nylon 100% (Solution Dyed Nylon)
 Backing – PVC and Glass Fiber

Specification Pile height – H8mm to L3mm
 Textured loop pile
 Overall thickness – 10.5mm
 Size – 500mm×500mm
 Pile density – 1/10 gauge
 Ground pattern 17.0 stitch
 Seiha pattern 17.5 stitch
 Packing – 16pcs/box = 4㎡
 Method – Loose-lay method (Tackifier adhesive)

Flame-retardant / Fire Defense Law in Japan Authorized No.E2230223
 Antistatic / Charged voltage of human body – 1.0kv or less
 (JIS L 1021-16 : 23 °C, 25%RH, synthetic rubber sole)

Stain-resistant / Fluorine-resin finish

- Right after installation, color shading could be seen on the floor. This is just because surface piles partially lie down. With the passage of time, it will disappear.
- Due to its 3-dimensional texture, the level difference might be caused on the joints of tiles. This is part of the pattern and not a manufacturing defect.
- The joint may be conspicuous immediately after installation, but it will fade out over time.
- We recommend monolithic installation. (It can also be installed in quarter turn.)
- For Ground Pattern (GX8211 to GX8218) and Seiha Pattern (GX8251 to GX8258), the color numbers with the same 1st digit can be coordinated in the same color tone. Due to different production lots, there may be slight color differences.

※ Design Registered

Ground pattern



Seiha pattern





Sokoitari Grandair II

The newest version of SOKOITARI series. Its unique nondirectional design with abundant loop piles can create a high-end atmosphere. Won the prize of 'GOOD DESIGN AWARD'




Monolithic
↑ ↑
↑ ↑ GX81012 • GX81052




GX81014



Monolithic

 GX81011 • GX81051



Monolithic

 GX81013 • GX81053

Sokoitari Grandair II ^{NEW}

GX-81000

Composition Pile – BCF Nylon 100% (Solution Dyed Nylon)
 Backing – PVC and Glass Fiber

Specification Pile height – H7.5mm to L3mm
 Textured loop pile
 Overall thickness – 10mm
 Size – 500mm×500mm
 Pile density – 1/10 gauge 14.5 stitch
 Packing – 16pcs/box = 4㎡
 Method – Loose-lay method (Tackifier adhesive)

Flame-retardant / Fire Defense Law in Japan Authorized No.E2240082
 Antistatic / Charged voltage of human body – 1.0kv or less
 (JIS L 1021-16 : 23 °C, 25%RH, synthetic rubber sole)
 Stain-resistant / Stain Release (NANO CLEAN)* For more information on NANO CLEAN, please refer to page 18.

- Right after installation, color shading could be seen on the floor. This is just because surface piles partially lie down. With the passage of time, it will disappear.
- Due to its 3-dimensional texture, the level difference might be caused on the joints of tiles. This is part of the pattern and not a manufacturing defect.
- We recommend monolithic installation. (It can also be installed in quarter turn.)
- For Ground Pattern (GX81051 to GX81055) and Yuki Pattern (GX81011 to GX81018), the color numbers with the same 1st digit can be coordinated in the same color tone. Due to different production lots, there may be slight color differences.

※ Design Registered

Monolithic Quarter turn



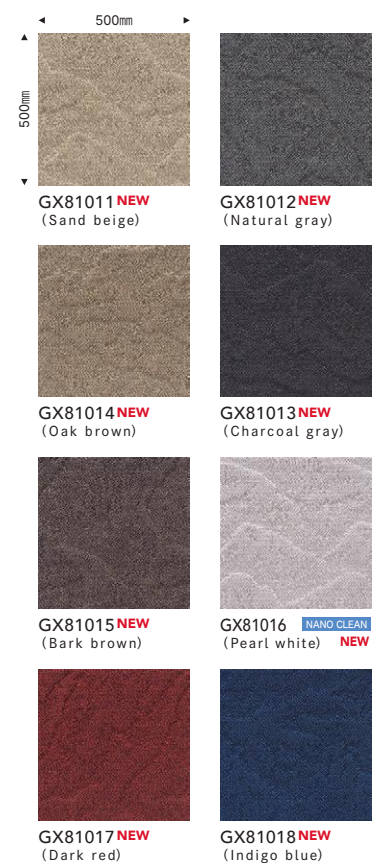
GOOD DESIGN



Ground pattern

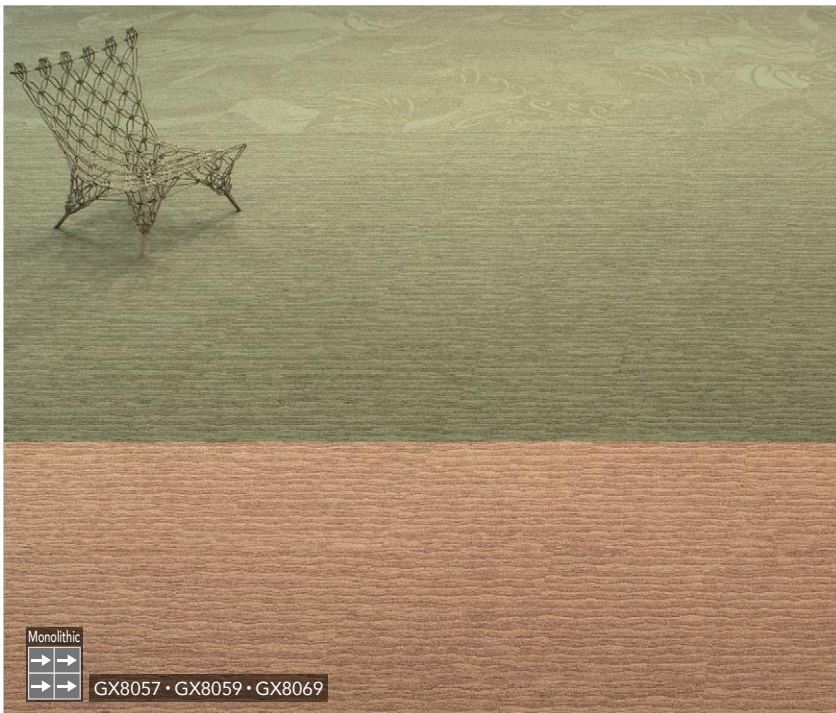


Yuki pattern



Sokoitari Inspiration

SOKOITARI's third generation that features the image of the ground and the following wind. The combination of "wavy base" pattern and "fair wind" pattern can create unprecedentedly elegant floor images. Won the prize of 'GOOD DESIGN AWARD'





Sokoitari Inspiration

GX-8000

Composition Pile – BCF Nylon 100%
 Backing – PVC and Glass Fiber

Specification Pile height – H5mm to L3mm
 Textured loop pile
 Overall thickness – 8mm
 Size – 500mm×500mm
 Pile density – 1/12 gauge 13.5 stitch
 Packing – 16pcs/box = 4㎡
 Method – Loose-lay method (Tackifier adhesive)

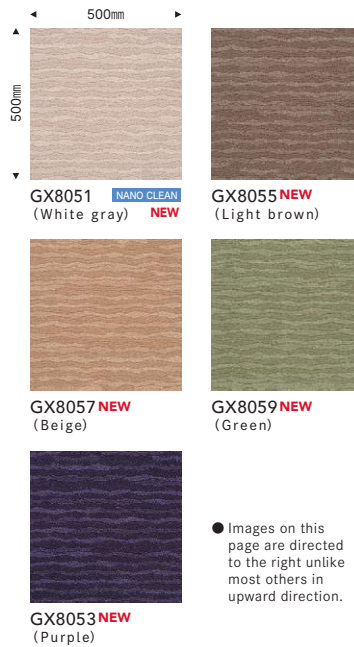
Flame-retardant / Fire Defense Law in Japan Authorized No.EO070165
 Antistatic / Charged voltage of human body – 1.0kv or less
 (JIS L 1021-16 : 23 °C, 25%RH, synthetic rubber sole)
 Stain-resistant / Stain Release (NANO CLEAN)* (GX8051 · GX8061) For more information on NANO CLEAN, please refer to page 18.

- The shadows of joints are sometimes visible, which is not a manufacturing defect.
- Right after installation, color shading could be seen on the floor. This is just because surface piles partially lie down. With the passage of time, it will disappear.
- For Ground Pattern (GX8051 · GX8053 · GX8055 · GX8057 · GX8059) and Oikaze Pattern (GX8061 · GX8063 · GX8065 · GX8067 · GX8069), the color numbers with the same 1st digit can be coordinated in the same color tone. Due to different production lots, there may be slight color differences.
- We recommend monolithic installation. (It can also be installed in quarter turn.)

※ Design Registered



Ground pattern



Oikaze pattern



● Images on this page are directed to the right unlike most others in upward direction.

● Images on this page are directed to the right unlike most others in upward direction.

The original tapestry of "Tail wind", Oikaze-design

This product was originated from a new concept that a large original image of a strong tail wind was cut into tile shapes and laid at random to create an integrated luxurious image. Therefore, each tile has a different pattern but as a whole it creates an image of a high-quality floor space with a sense of uniformity.



- Random design with no pattern repeats.
- Floor design is infinite by the arrangement of how to place tiles.
- The patterns do not connect at seams because tiles with individual design are randomly packed.

Sokoitari Classic

SOKOITARI's sister product with more subtle "IKI" images.
Won the prize of 'GOOD DESIGN AWARD'





Sokoitari Classic

GX-7900

Composition Pile – BCF Nylon 100% (Solution Dyed Nylon)
 Backing – PVC and Glass Fiber (Sustive Back)

Specification Pile height – H5mm to L3mm

Textured loop pile

Overall thickness – 7.5mm

Size – 500mm×500mm

Pile density – 1/12 gauge 13.0 stitch

Packing – 16pcs/box = 4㎡

Method – Loose-lay method (Tackifier adhesive)

Flame-retardant / Fire Defense Law in Japan Authorized No.EO060066

Antistatic / Charged voltage of human body – 1.0kv or less

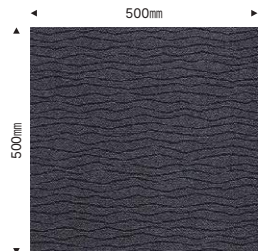
(JIS L 1021-16 : 23 °C, 25%RH, synthetic rubber sole)

Stain-resistant / Fluorine-resin finish

- The shadows of joints are sometimes visible, which is not a manufacturing defect.
- Avoid the installation at a lower temperature than 5 degrees Centigrade.
- Right after installation, color shading could be seen on the floor.
 This is just because surface piles partially lie down.
 With the passage of time, it will disappear.
- We recommend monolithic installation. (It can also be installed in quarter turn.)

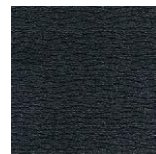


GX7903

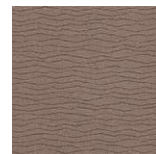


GX7902
(Dark gray)

● Images on this page are directed to the right unlike most others in upward direction.



GX7903
(Black)



GX7904
(Medium brown)



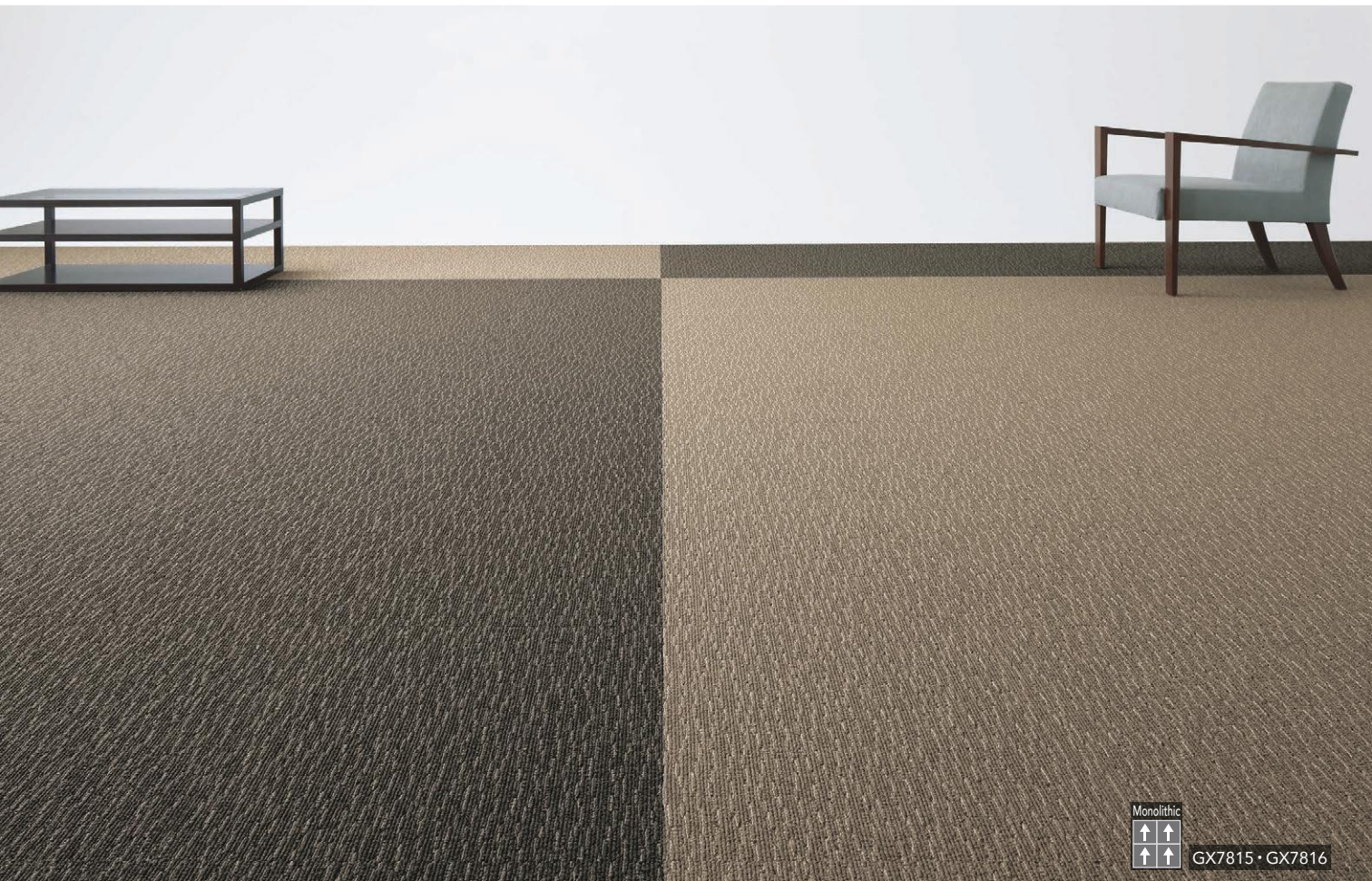
GX7905
(Dark brown)


Sokoitari

Japanese aesthetic feeling "IKI"(swellish) is ultimately expressed in SOKOITARI's bold monochrome patterns. A lot of designs can be created by variety of combinations. Cutting edge carpet tiles which won GOOD DESIGN AWARD 2005.



Monolithic Monolithic
↑↑ ↑↑ →→ →→
↑↑ ↑↑ →→ →→ GX7813・GX7814



Monolithic

 GX7815 · GX7816

Sokoitari

GX-7800

Composition Pile – BCF Nylon 100% (Solution Dyed Nylon)

Backing – PVC and Glass Fiber

Specification Pile height – H4.5mm to L2.5mm

Textured loop pile

Overall thickness – 7.5mm

Size – 500mm×500mm

Pile density – 1/12 gauge 13.0 stitch

Packing – 16pcs/box = 4㎡

Method – Loose-lay method (Tackifier adhesive)

Flame-retardant / Fire Defense Law in Japan Authorized No.EO040185

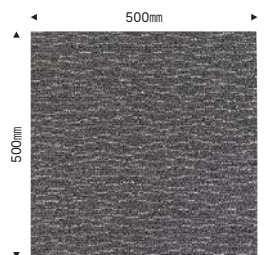
Antistatic / Charged voltage of human body – 1.0kv or less

(JIS L 1021-16 : 23 °C, 25%RH, synthetic rubber sole)

Stain-resistant / Fluorine-resin finish

- We have a patent for design-creating technology of SOKOITARI <GX-7800>.
- We recommend monolithic installation. (It can also be installed in quarter turn.)

Monolithic Quarter turn

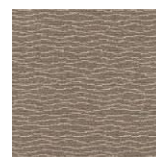


● Images on this page are directed to the right unlike most others in upward direction.

GX7813 (Gray)



GX7814 (Dark gray)



GX7815 (Light brown)



GX7816 (Dark brown)

Yuisome

Traditional dyeing techniques reproduced in carpet tile.
It features random crease lines, asymmetrical pattern and blended colors.



Quarter turn



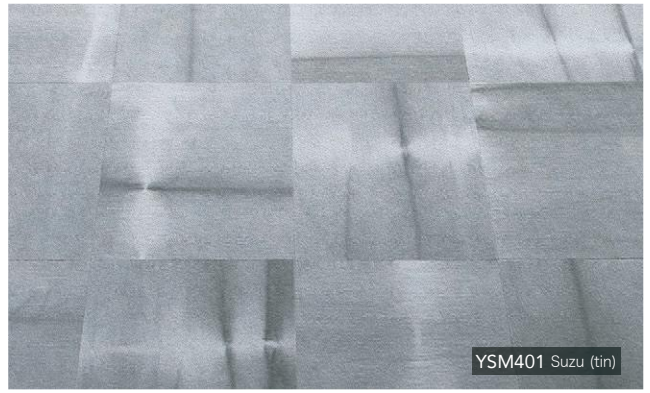
YSM403 Shinchu(brass)



"Yuisome" means tie-dye. Partially tied white carpet is dyed to have the penetration difference of dye, resulting in dramatic design with unexpected wrinkle lines and subtle gradation of color depth. Using this traditional dyeing technique, YUISOME is expressed as a new design in the modern era with the respect to the aesthetic sense and spirit handed over from ancient Japan.



YSM301 Cha-nezu (brownish grey)



YSM401 Suzu (tin)



YSM302 Ai-nezu (indigotic gray)



TTN3105 (Loose-Lay Tile)

Yuisome

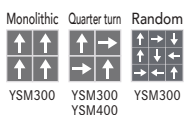
YSM-300 YSM-400

Composition Pile – BCF Nylon 100%
 Backing – PVC and Glass Fiber
 Specification Pile height – 6mm
 Cut pile
 Overall thickness – 9mm
 Size – 500mm×500mm
 Pile density – 1/10 gauge 13.5 stitch
 Packing – 16pcs/box = 4㎡
 Method – Loose-lay method (Tackifier adhesive)

Flame-retardant / Fire Defense Law in Japan Authorized No.E2130269
 Antistatic / Charged voltage of human body – 1.0kv or less
 (JIS L 1021-16 : 23 °C, 25%RH, synthetic rubber sole)
 Stain-resistant / Stain Release (NANO CLEAN)* For more information on NANO CLEAN,
 please refer to page 18.

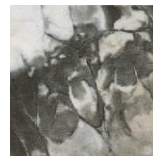
- Occasionally the direction of cut-piles are partly broken in part, which looks like color shading. This is one of the characteristics of cut-pile carpets and not a manufacturing defect.
- The color shading differs on a tile-by-tile basis. In case you do not feel comfortable about the floor after installation, relocate the tiles partly so that it will look natural.
- In YUU design (YSM401 to 403), half of the tiles have a white ray pattern.
- Quarter-turn installation is the standard for YSM400's.
- Installation in random direction is the standard for YSM300's. (monolithic or quarter turn would also be applicable.)

※ Design Registered



YSM300 YSM300 YSM300
YSM400

YOH



YSM301 NANO CLEAN
Cha-nezu (brownish grey)



YSM302 NANO CLEAN
Ai-nezu (indigotic gray)

YUU



YSM401 NANO CLEAN
Suzu (tin)



YSM402 NANO CLEAN
Dou (copper)



YSM403 NANO CLEAN
Shinchu (brass)

Granastone

Beautiful natural stone-look pattern inspired by granite.
Its delicate feeling and sophisticated colors will create a classy room scene.



Monolithic
↑ ↑
↑ ↑ GX7654



GX7654



GX7652 · GX7653

Granastone ^{NEW}

GX-7650

Composition Pile – BCF Nylon 100% (Solution Dyed Nylon)
 Backing – PVC and Glass Fiber

Specification Pile height – H7.5mm to L2.5mm

Cut and loop pile

Overall thickness – 10mm

Size – 500mm×500mm

Pile density – 1/10 gauge 12.5 stitch

Packing – 16pcs/box = 4㎡

Method – Loose-lay method (Tackifier adhesive)

Flame-retardant / Fire Defense Law in Japan Authorized No.E2240081

Antistatic / Charged voltage of human body – 1.0kv or less

(JIS L 1021-16 : 23 °C, 25%RH, synthetic rubber sole)

Stain-resistant / Fluorine-resin finish

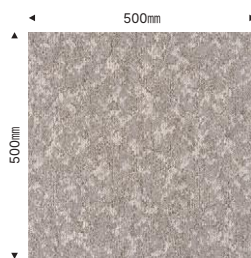
● Occasionally the direction of cut-piles are partly broken in part, which looks like color shading. This is one of the characteristics of cut-pile carpets and not a manufacturing defect.

● We recommend monolithic installation. (It can also be installed in quarter turn.)

Monolithic Quarter turn



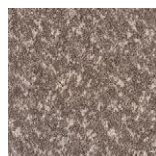
Flame-Retardant Antistatic



GX7651 ^{NEW}



GX7652 ^{NEW}



GX7653 ^{NEW}



GX7654 ^{NEW}



GX7653

Orvie

Beautiful random block pattern created by multi-colored cut & loop piles ----
ORVIE's 3-dimensional image will be more clearly shown by light reflection.



Monolithic
GX8301



Orvie

GX-8300

Composition Pile – BCF Nylon 100% (Solution Dyed Nylon)
 Backing – PVC and Glass Fiber

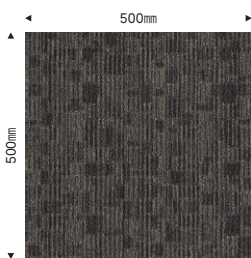
Specification Pile height – H6.5mm / L4.5mm
 Cut and loop pile
 Overall thickness – 9mm
 Size – 500mm×500mm
 Pile density – 1/10 gauge 12.0 stitch
 Packing – 16pcs/box = 4m²
 Method – Loose-lay method (Tackifier adhesive)

Flame-retardant / Fire Defense Law in Japan Authorized No.E2150031
 Antistatic / Charged voltage of human body – 1.0kv or less
 (JIS L 1021-16 : 23 °C, 25%RH, synthetic rubber sole)
 Stain-resistant / Fluorine-resin finish

- Occasionally the direction of cut-piles are partly broken in part, which looks like color shading. This is one of the characteristics of cut-pile carpets and not a manufacturing defect.
- We recommend monolithic installation. (It can also be installed in quarter turn.)

Monolithic Quarter turn

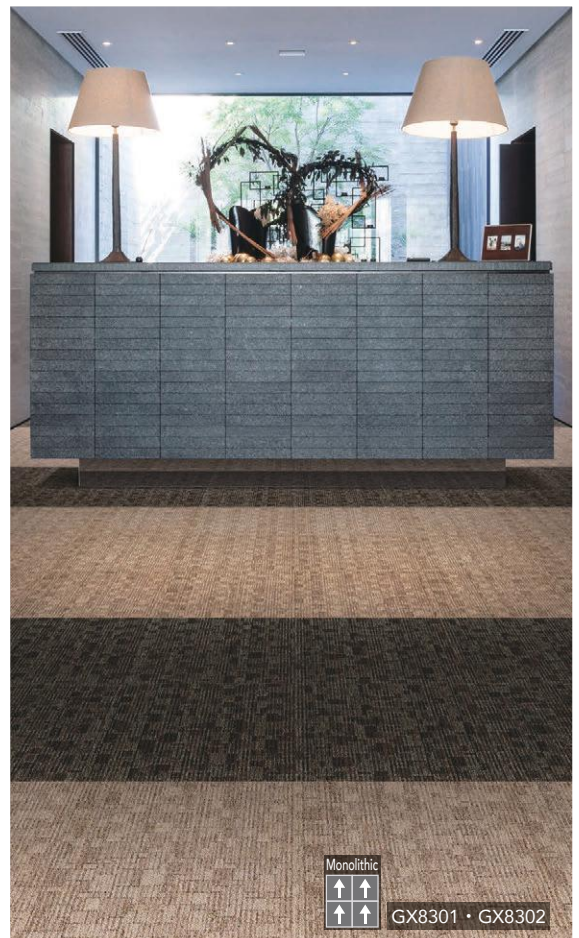
Eco-friendly Long Life



GX8302



GX8301



Nocture

Delicate texture is created by twisting different types of yarns. On the top of it, beautiful wavy pattern is overlapped.



Monolithic
↑ ↑
↑ ↑ GX8401



Monolithic

 GX8404

Nocture

GX-8400

- Composition Pile – BCF Nylon 100% (Solution Dyed Nylon)
 Backing – PVC and Glass Fiber
- Specification Pile height – H6mm / L4.5mm
 Cut and loop pile
 Overall thickness – 8.5mm
 Size – 500mm×500mm
 Pile density – 1/10 gauge 12.0 stitch
 Packing – 16pcs/box = 4㎡
 Method – Loose-lay method (Tackifier adhesive)

- Flame-retardant / Fire Defense Law in Japan Authorized No.E2150032
- Antistatic / Charged voltage of human body – 1.0kv or less (JIS L 1021-16 : 23 °C, 25%RH, synthetic rubber sole)
- Stain-resistant / Fluorine-resin finish
- Occasionally the direction of cut-piles are partly broken in part, which looks like color shading. This is one of the characteristics of cut-pile carpets and not a manufacturing defect.
- The color shading differs on a tile-by-tile basis. In case you do not feel comfortable about the floor after installation, relocate the tiles partly so that it will look natural.
- The joint may be conspicuous immediately after installation, but it will fade out over time.
- We recommend monolithic installation. (It can also be installed in quarter turn.)

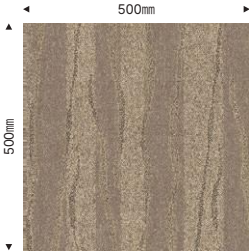
Monolithic Quarter turn









GX8401



GX8404



GX-200

22 attractive solid colors made by cut and loop texture.



Quarter turn
↑ →
← ↓
GX2059 • GX2060 • GX2082



GX-200

Composition Pile – BCF Nylon 100%
 Backing – PVC and Glass Fiber

Specification Pile height – 6mm
 Cut pile
 Overall thickness – 9mm
 Size – 500mm×500mm
 Pile density – 1/10 gauge 13.5 stitch
 Packing – 16pcs/box = 4m²
 Method – Loose-lay method (Tackifier adhesive)

Flame-retardant / Fire Defense Law in Japan Authorized No.EO000094

Antistatic / Charged voltage of human body – 1.0kv or less (JIS L 1021-16 : 23 °C, 25%RH, synthetic rubber sole)
 Stain-resistant / Fluorine-resin finish

- Occasionally the direction of cut-piles are partly broken in part, which looks like color shading. This is one of the characteristics of cut-pile carpets and not a manufacturing defect.
- Quarter-turn installation is the standard.

Quarter turn



GX-200 Grid Cut (made-to-order product)

Grid cutting, which emphasizes on thickness and 3-dimensional effect, will propose new design possibility. Available in all GX-200 colors.



GX2060-GC4 • GX2082-GC4

GX-200 Grid Cut made-to-order product

Order conditions	Minimum order quantity – one box (16 tiles) minimum for a standard color in units of a square meter. Lead time – 2 weeks and more after PO is placed. (If you need more than 300m ² , please contact TOLI sales rep.) ※ If the ordering quantity is large, it may require extra lead time. ※ Put “-GC4” at the end of the color number that you select from GX-200 range. (e.g. GX2051-GC4)
Composition	Pile – BCF Nylon 100% Backing – PVC and Glass Fiber
Specification	Pile height – 6mm Cut pile Overall thickness – 9mm Size – 500mm×500mm Pile density – 1/10 gauge 13.5 stitch Packing – 16pcs/box = 4m ² Method – Loose-lay method (Tackifier adhesive)

Flame-retardant / Fire Defense Law in Japan Authorized No.EO000094
Antistatic / Charged voltage of human body – 1.0kv or less
(JIS L 1021-16 : 23 °C, 25%RH, synthetic rubber sole)
Stain-resistant / Fluorine-resin finish

- Occasionally the direction of cut-piles are partly broken in part, which looks like color shading. This is one of the characteristics of cut-pile carpets and not a manufacturing defect.
- Performance, selection, installation, maintenance, and usage precautions for this product are equal to those for GX-200.
- Grid cutting is not applicable for other carpet tiles than GX-200.
- As edge bevels are highlighted, pay attention to achieve straight joining lines.
- The standard is all the 4 sides beveling, but it can also be done for 1 to 3 sides only. Please contact TOLI sales rep.
- If Grid-cut tiles with 1-3 sides beveling are installed in monolithic direction, joining line of non-beveled sides can be conspicuous. Quarter turn installation is strongly recommended.
- In the case of 1 to 3 sides beveling, both sides on the same joint should be beveled as below. Otherwise GRID CUT cannot exactly stand out on the floor.
- Can be installed either in quarter turn or monolithic direction.



GX-200 Metal Design (made-to-order product)

GX-200 with a stainless chip will create a shipshape image.

The standard type of GX-200 METAL DESIGN has a metal chip in the center of the tile.



GX-200 Metal Design made-to-order product

Order conditions Minimum order quantity – 4 tiles (1㎡) minimum, for a GX-200 standard color, in units of a square meter.

Lead time – 10 days after an order (Contact TOLI sales rep. for the quantity of more than 100 tiles)

※ All above 5 metal chips can be added to any color from GX-200 range. Select the type of chip and put "-MDT", "-MDH", ...etc. at the end of the preferred color. (e.g. GX2001-MDT)

(e.g.) Code numbers for standard inlay (Refer to the figure below)

10mm x 60mm Rectangular (vertically long)	"GX-200 color no." + "MDT"
60mm x 10mm Rectangular (horizontally long)	"GX-200 color no." + "MDH"
25mm x 25mm Square	"GX-200 color no." + "MDS"
25mm x 25mm Rhombus	"GX-200 color no." + "MDH"
Diameter 25mm Circle	"GX-200 color no." + "MDE"

Composition Pile – BCF Nylon 100%

Backing – PVC and Glass Fiber

Specification Pile height – 6mm

Cut pile

Overall thickness – 9mm (7mm at metal chip)

Size – 500mm x 500mm

Pile density – 1/10 gauge 13.5 stitch

Packing – 4pcs/box = 1㎡

Method – Loose-lay method (Tackifier adhesive)

Flame-retardant / Fire Defense Law in Japan Authorized No.EO000094

Antistatic / Charged voltage of human body – 1.0kv or less

(JIS L 1021-16 : 23 °C, 25%RH, synthetic rubber sole)

Stain-resistant / Fluorine-resin finish

- Occasionally the direction of cut-piles are partly broken in part, which looks like color shading. This is one of the characteristics of cut-pile carpets and not a manufacturing defect.

- Performance, selection, installation, maintenance, and usage precautions for this product are equal to those for GX-200.

- Metal chips can be mounted at other position than the center of a carpet tile, but not with less space than 3 cm between edges of metal chip and carpet tile. Contact your TOLI sales rep. for details.

- Please install it on a smooth and flat subfloor. If there is an irregularity, the metal chip may get damaged.

- Do not install the product in a place where carts and heavy objects frequently move.

- The protective film is attached to the metal chip surface at the time of delivery. Remove it after installation.

- Metal chips cannot be mounted into other carpet tiles than GX-200.

- Quarter-turn installation is the standard.

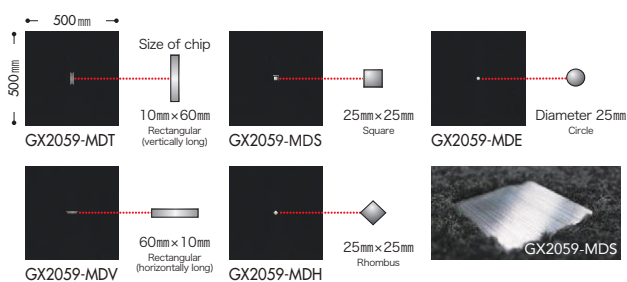
※ Design Registered

Quarter turn



[Standard type]

A carpet tile with a metal chip inlayed at the center is the standard type.



GX-300

GX-300 has a deep solid color image in textured loop piles. Combination with other graphic-designed carpet tiles is also attractive. Stain release performance has been more advanced by Nano Clean finish for all the colors.





GX-300

- Composition Pile – BCF Nylon 100%
 Backing – PVC and Glass Fiber
- Specification Pile height – H5mm to L3mm
 Textured loop pile
 Overall thickness – 8mm
 Size – 500mm×500mm
 Pile density – 1/10 gauge 10.5 stitch
 Packing – 16pcs/box = 4㎡
 Method – Loose-lay method (Tackifier adhesive)

Flame-retardant / Fire Defense Law in Japan Authorized No.EO080033
 Antistatic / Charged voltage of human body – 1.0kv or less
 (JIS L 1021-16 : 23 °C, 25%RH, synthetic rubber sole)
 Stain-resistant / Stain Release (NANO CLEAN)* For more information
 on NANO CLEAN, please refer to page 18.

- Right after installation, color shading could be seen on the floor. This is just because surface piles partially lie down. With the passage of time, it will disappear.
- We recommend monolithic installation. (It can also be installed in quarter turn.)



Water Repellent/Stain Release "NANO CLEAN"

TOLI nylon carpet tile is antifouling treated with fluorine resin. Therefore, it is resistant to stain and keeps its aesthetic appearance for a long time. It is also excellent in water and oil repellent performance, so it does not get stained if dirt is wiped off immediately. "NANO CLEAN" is an advanced antifouling process using NANO-process technology added on conventional fluorine resin processing, which will provide superior antifouling performance against soil and sand stain.



※ NANO CLEAN The color number marked "NANO CLEAN" is NANO CLEAN-finished.

GX

Images of Space

GX Project Reference



GX4431 • GX4432 • GX4433



Office p.96

Hotel p.106

Commercial Facilities p.114

Education / Public p.120

Hospital / Healthcare p.124

Residential p.128

Office





Office



Monolithic

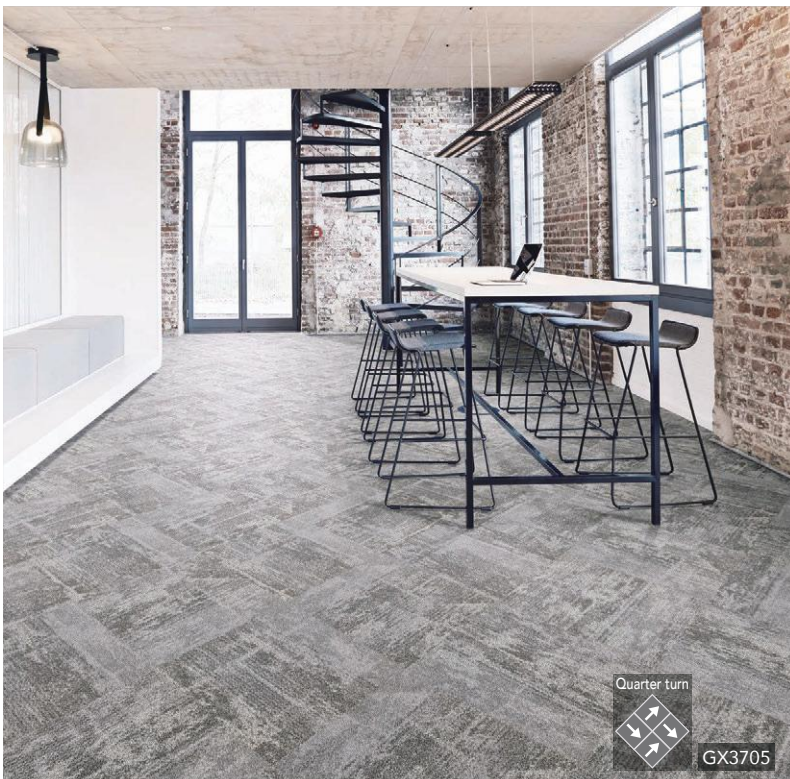


GX4431

Ashlar



TTN3118 (Loose-Lay Tile)



Office





Office





Monolithic
↑ ↑
↑ ↑

GX8211 • GX8212 • GX8214 • GX8215 • GX8217 • GX8251 • GX8258

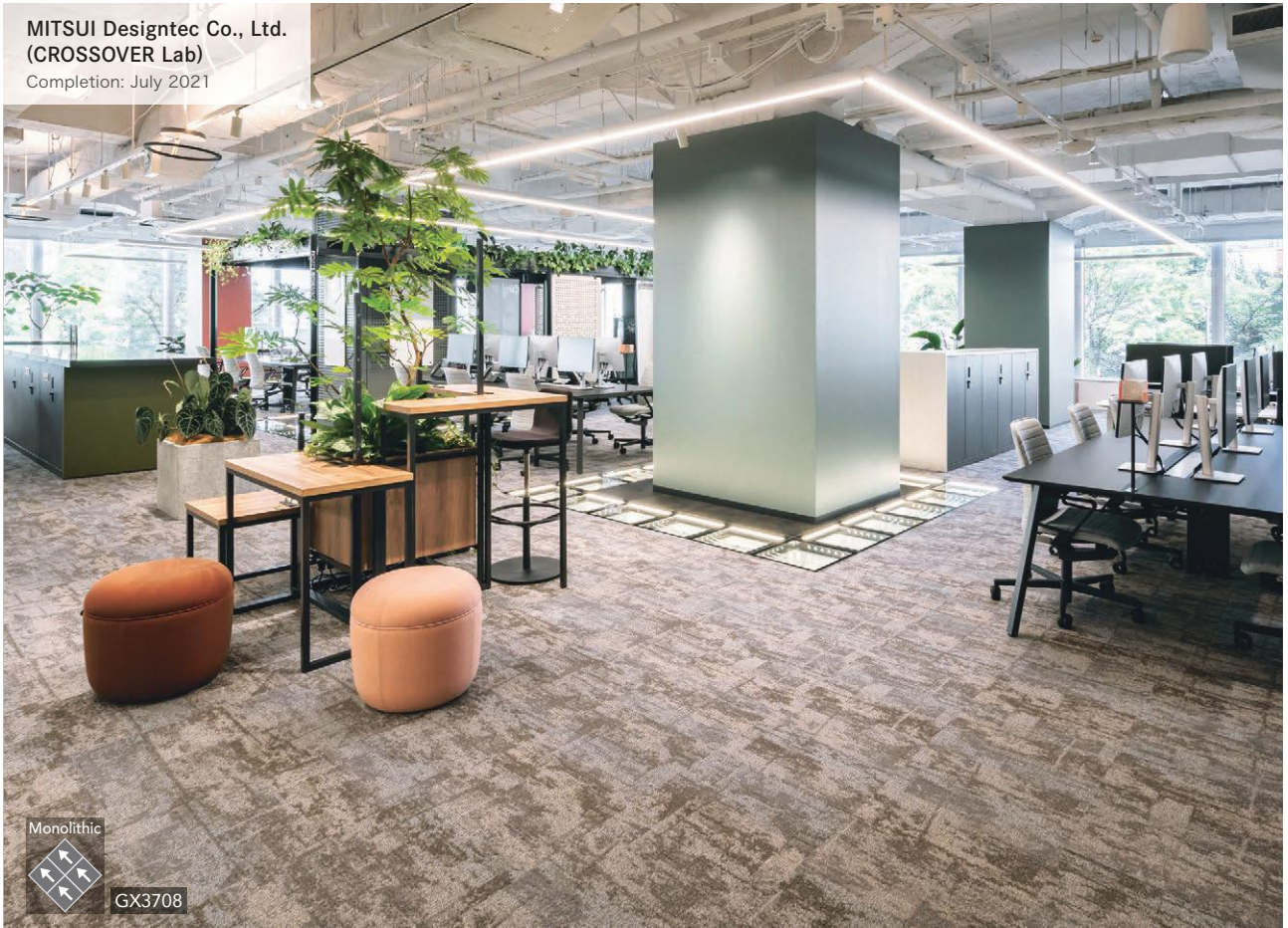


Monolithic
↑ ↑
↑ ↑

GX8601 • GX8602

Office

MITSUI Designtec Co., Ltd.
(CROSSOVER Lab)
Completion: July 2021



Monolithic



GX3708



Monolithic



GX3708

Shino-Test Corporation Sagamiara Laboratory
Completion: November 2022

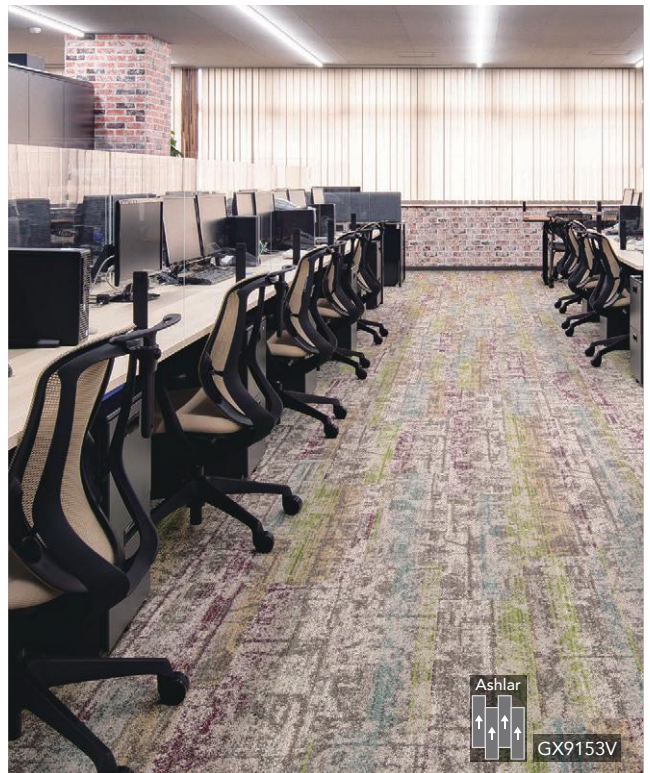


Monolithic
↑ ↑
↑ ↑
GX3352

Daimaru Inc. Distribution Center Building
Completion: June 2021



Ashlar
← ←
← ←
GX4551V



Ashlar
↑ ↑
↑ ↑
GX9153V

Hotel



Monolithic

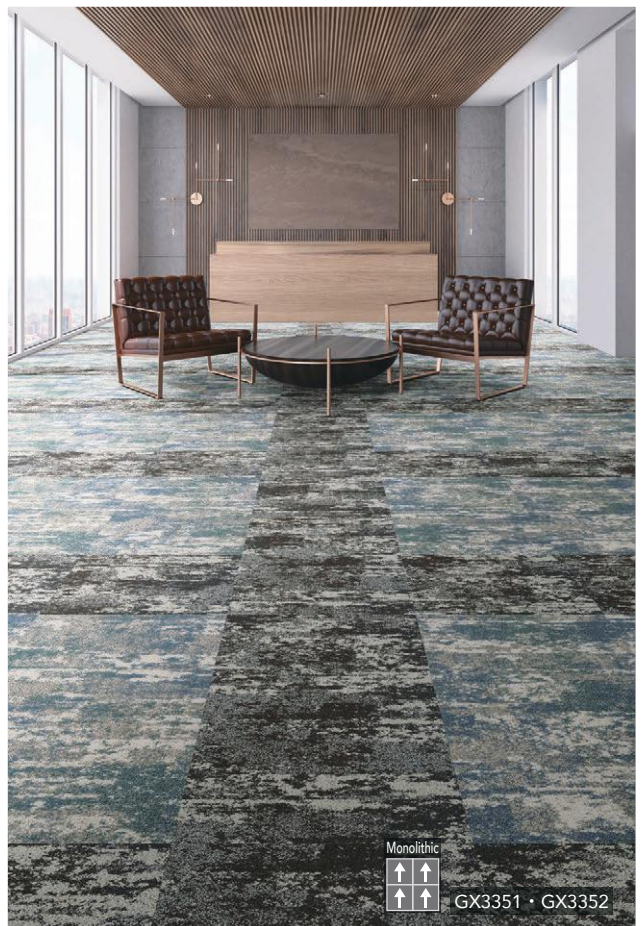


GX6252L



Hotel





Hotel



Monolithic

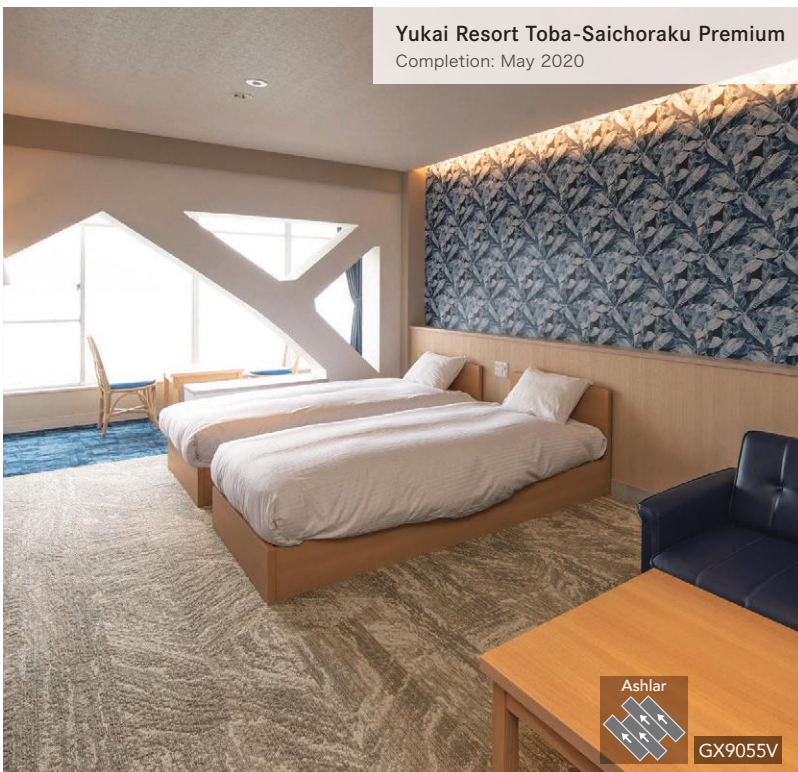
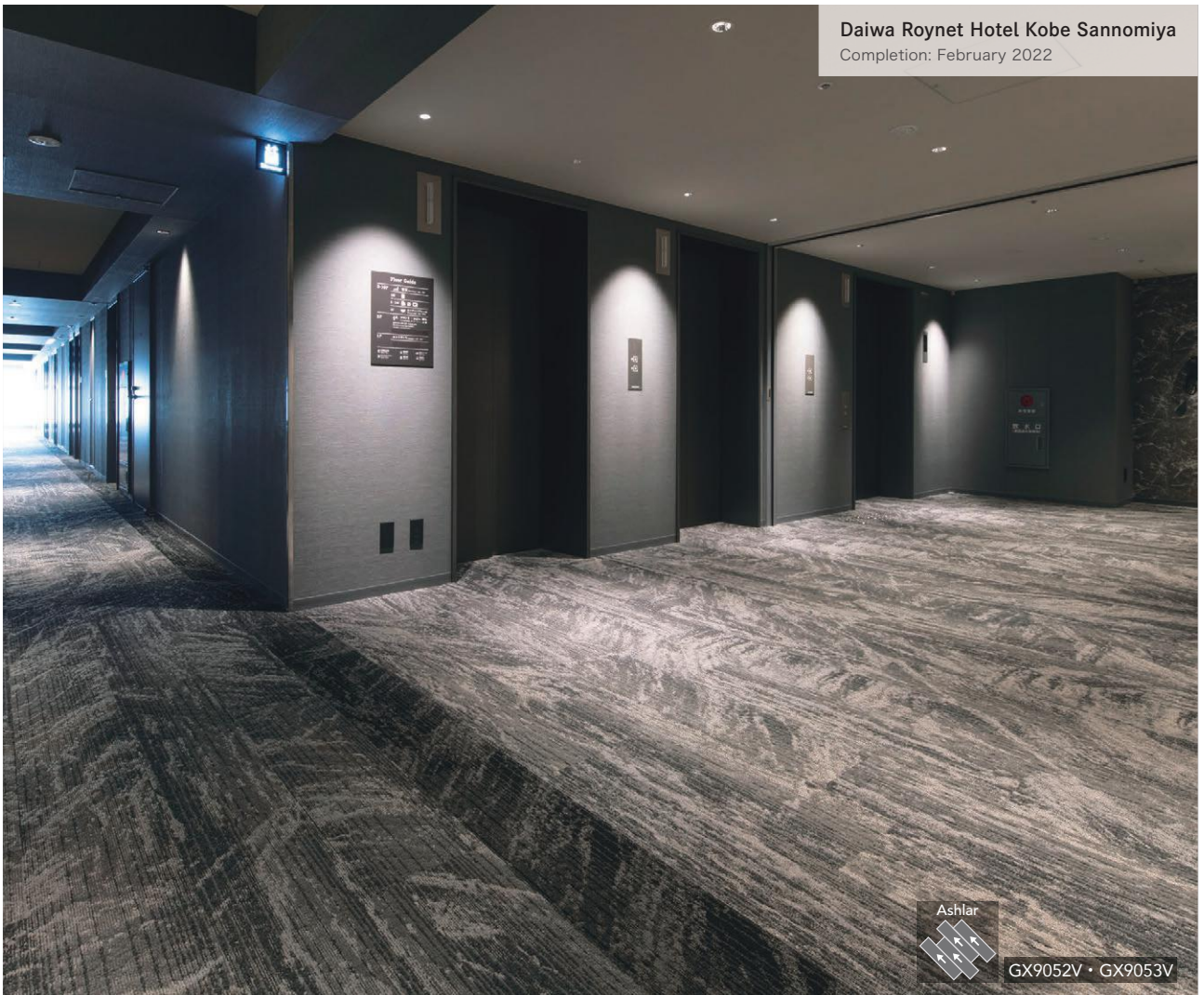


GX5101 · MT5151F · MT5171F



Hotel





Commercial Facilities





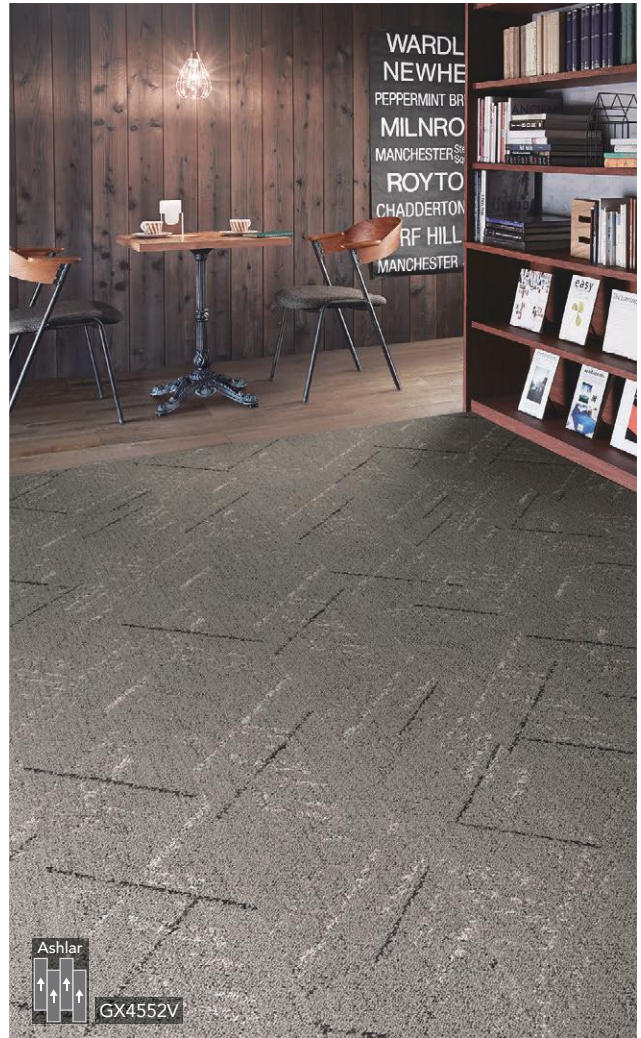
Commercial Facilities





GX9981V · GX9982V · GX9983V

Commercial Facilities





Education / Public





Education / Public



Monolithic



GX3705 • GX3707



Hospital / Healthcare

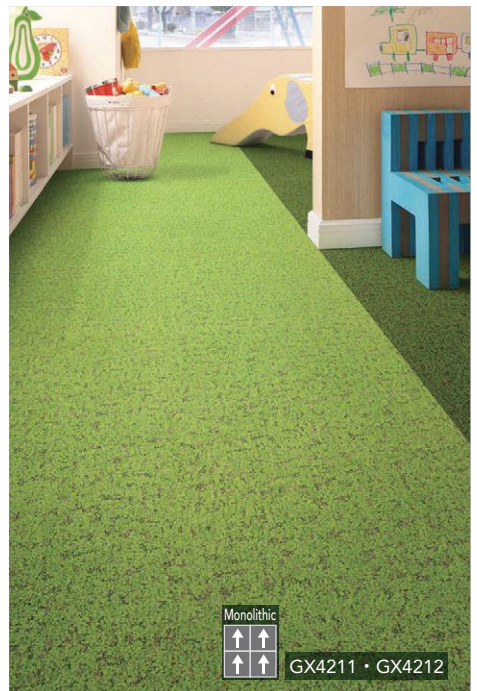




Herring bone
GX96503V



Monolithic
GX4134



Monolithic
GX4211 · GX4212

Hospital / Healthcare

St. Marianna University School of Medicine Hospital
Completion: October 2022



Monolithic



GX3352



Monolithic



GX9961V • GX9962V • GX9963V



Monolithic



GX4131



Monolithic



GX8604

IMS Me-Life Clinic Shibuya
Completion: March 2022



Monolithic
→
→
→
GX9981V • GX9982V • GX9983V



Ashlar
→
→
→
GX9981V • GX9982V



Ashlar
→
→
→
GX9971V • GX9972V • GX9973V

Residential



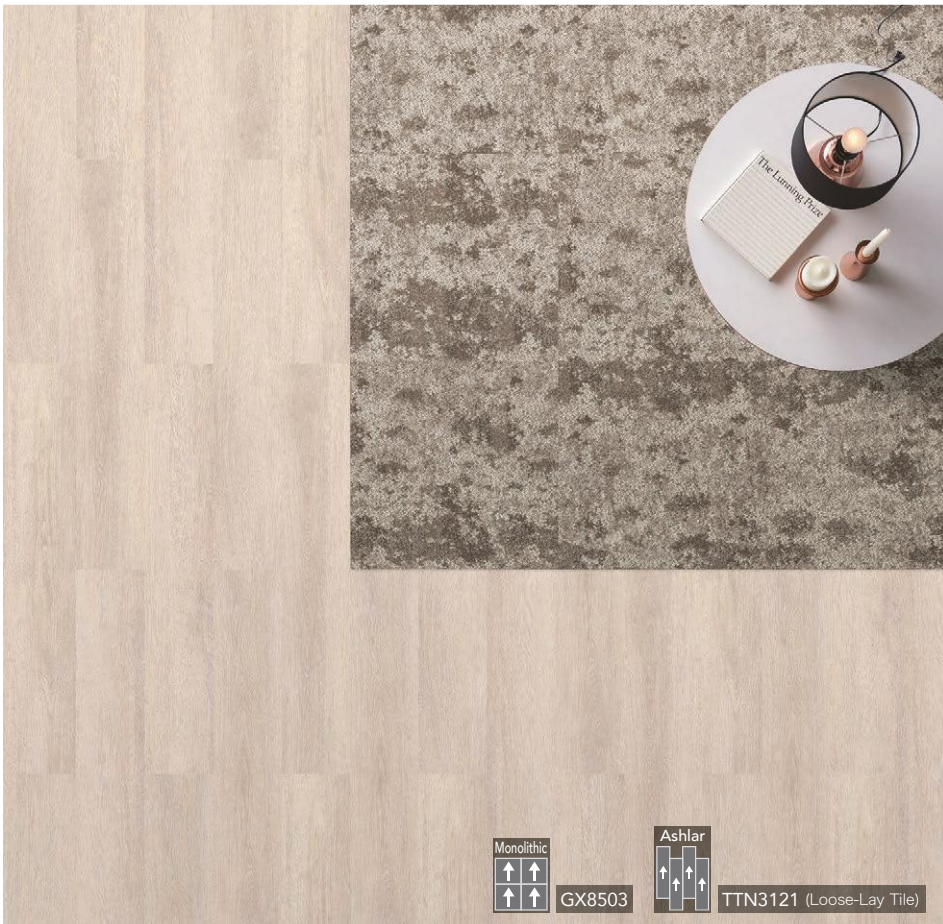
Monolithic



GX7652 • GX7653



Ashlar
↑ ↑ ↑
GX4551V



Monolithic
↑ ↑ ↑
GX8503

Ashlar
↑ ↑ ↑
TTN3121 (Loose-Lay Tile)

Residential



Quarter turn



GX6253L



Optimal combination for preserving indoor aesthetics and safety

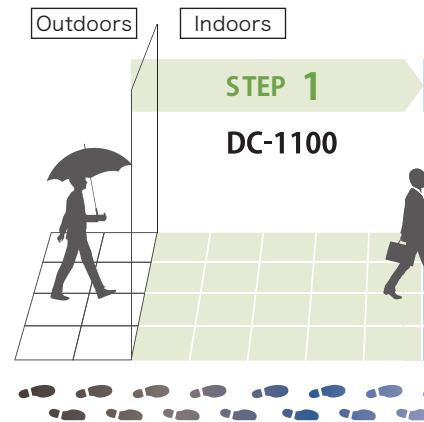
Divide the entrance into two zones to effectively remove "dirt" and "moisture".



TOLI Dust Control Carpet Tile

DC-1100

Brush the dirt off shoe soles and keep it in dust pocket.

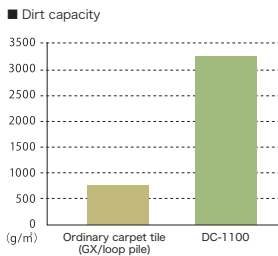


STEP 1 Remove Dust and Sand

Prevent dust and sand from coming indoors.

Large dust pocket functions;

The opening among piles of the carpet tile is called a dust pocket, and the dirt will drop from shoe soles and accumulate in this dust pocket. Because of the large dust pockets, DC-1100 can absorb a larger amount of dust and sand compared to ordinary carpet tiles.



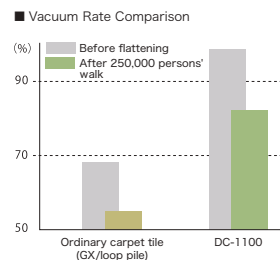
<Test method>

Dust type: Powder for JIS test-type 1

1. Big amount of dust is pushed into the pile, and excessive amount remaining over the pile is removed with the use of a brush or the like.
2. The carpet tile is weighed when the brushed surface looks clean, and calculate the increased weight as the dust pocket capacity.

The pile structure designed for easy maintenance

DC-1100 has a large dust pocket, and the ample opening will make the vacuum maintenance much easier compared to ordinary carpet tiles. And the dust pocket is kept well by durable piles to help continuous performance of maintenance.



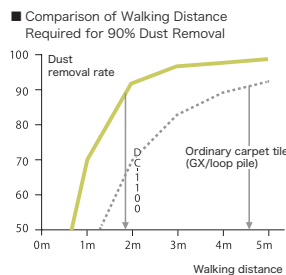
<Test method>

Dust type: Powder for JIS test-type 1

1. According to JIS L 4406, rotate caster chair tester 2000 turns, to have carpet piles flattened.(Such carpet is assumed equal to the condition after approx. 250,000 persons' walk.)
2. Rub 100g /m² of dust into the carpet with a brush, and reciprocate the Upright Vacuum Cleaner 20 times in each direction of back-and-forth and right-and-left.
3. Measure the weight of vacuumed dust, and then calculate the vacuum rate.

DC-1100 can remove 90% of dust and sand just by walking 2 m on it.

Dust pocket prevents dirt and sand from overflowing the surface of carpet tile. For removing 90% dirt from the shoe soles, approx. 5 m walk is necessary on ordinary carpet tile, while only 2 m walk suffices on DC-1100.



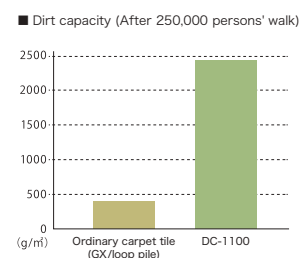
<Test method>

Dust type: Powder for JIS test-type 1

1. Fill the tray with specific dust and flatten the surface.
2. Carpet tiles are laid in one line of 5m length. Then place at the end a mat to wipe off the remaining dirt.
3. After attaching dust to the shoe sole, walk on every carpet tile one step each at a time, then completely remove remaining dust on the shoe sole with a mat.
4. After repeating this operation 100 times, the dust removal rate of each carpet tile was calculated in comparison with the total dust removed.

Highly durable and long-lasting functions

DC-1100 is more resistant against flattening than ordinary carpet tiles, because of solution dyed nylon being tangled with thick nylon yarns. As a result, the capacity of the dust pocket is maintained and the dust removal function continues for a long time.



<Test method>

Dust type: Powder for JIS test-type 1

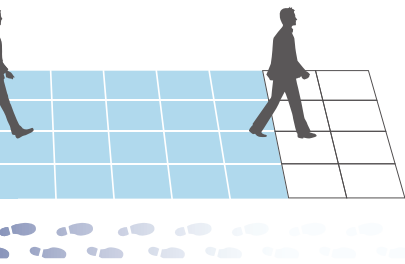
1. According to JIS L 4406, rotate caster chair tester 2000 turns, to have carpet piles flattened. (Such carpet is assumed equal to the condition after approx. 250,000 persons' walk.)
2. Big amount of dust is pushed into the pile, and excessive amount remaining over the pile is removed with the use of a brush or the like.
3. The carpet tile is weighed when the brushed surface looks clean, and calculate the increased weight as the dust pocket capacity.



For more information on DC-1100 & RC-1200, you can see from this QR code.

STEP 2

RC-1200



TOLI Rain Control Carpet Tile

RC-1200

Patented pile structure absorbs water from shoe soles and prevents it from being brought indoors.



STEP 2

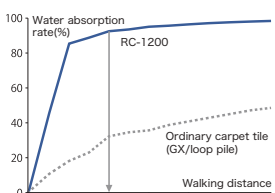
Remove the Moisture from Shoe Soles

Absorb moisture from shoe soles and it will evaporate quickly.

93% of moisture is removed securely with 2 m walk

RC-1200 piles are mixed with fine threads that absorb moisture easily. 93% of moisture is absorbed from shoe soles by about 2m walking on, which is impossible by ordinary carpet tiles.

Water Absorption Rate compared with ordinary carpet tiles

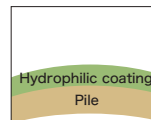


(Test method)

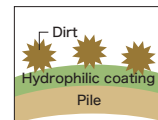
- Step in the water-filled tray for certain period of time and step in the empty tray twice.
- Take one step each on 12 test specimens of 500 mm square tile.
- Wipe off any remaining moisture from shoe soles.
- Taking above 1-3 procedure as 1 cycle, the amount of water absorbed in each carpet tile is figured out from the weight change after 50 cycles.

Hydrophilic coating will remove dirt easily, absorb moisture quickly

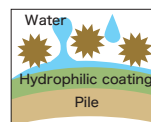
Hydrophilic coating of RC-1200 yarn helps to remove dirt easily and absorb moisture quickly. Therefore, water penetrates between the fiber surface and the dirty material, which makes it easier to remove the dirt after adhesion to fibers. In addition, it has excellent capacity to quickly absorb water.



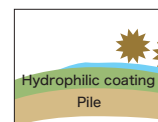
- The surface of the pile is hydrophilicity coated.



- Dirt adheres to the pile surface.



- Water of wet maintenance enters between the dirt and fiber to release the dirt.

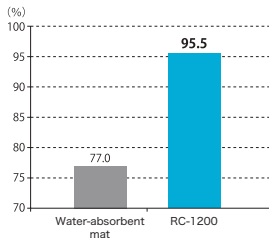


- Such dirt can be removed easily by wet maintenance.

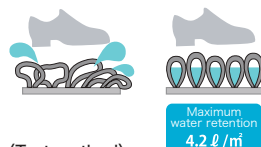
Absorbed moisture is securely retained.

RC-1200 is designed with a high-density pile that resists flattening by stepping on. Unlike ordinary water-absorbent mats, it will retain the absorbed moisture and will not allow the moisture to transfer indoors.

Water retention rate



Water-absorbent mat ■ RC-1200



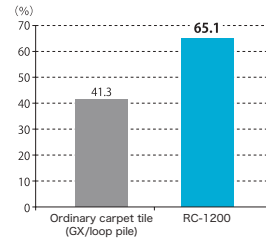
(Test method)

- Measure the weight of a 10cm square sample of ordinary water-absorbent mat and RC-1200 after immersion in water and kept horizontally for a certain period of time.
- Measure the weight of each specimen after the same weight (9.6kg) loaded for a certain period of time.
- Water retention rate was calculated.

Easy-to-Dry Structure

The 1st backing of RC-1200 is highly effective in spreading absorbed water horizontally. By enlarging the superficial area where water is exposed to the air, it will be dried up more quickly.

Water evaporation comparison



Drying image



(Test method)

50ml water is dropped on each test piece of 500 mm square size. After 24 hours' preservation under the specified condition (20°C, 60%RH), measure the weight to check the evaporated moisture from each tile.



PRIMECLASS

High quality you can feel by shoe soles.

Innovative Carpet to Create a Supreme Space.



For more information on PRIMECLASS, you can see from this QR code.



Majesty

Majestic atmosphere will be created by this ultimate quality produced by skilled design with no compromise even in details. Twisted yarns combining with multiple glossy fibers will create nice contrast just like a piece of magnificent fabric.

Tranquility

The calm and luxurious stepping comfort brings a profound tranquility. The high pile length and its density, as well as the unique felt backing, will make you feel comfortable and satisfied with your embraced support underfoot.

Harmony

Chic and classic design of high quality harmonizes beautifully with all spaces. The use of bulky thread realizes a spatial beauty with a sense of continuity by invisible tile seams.



"NANO CLEAN" provides much better stain resistance by adding special NANO finish to the existing stain release by fluoridation.

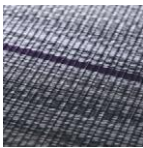
TOLI nylon carpet tile is antifouling treated with fluorine resin. Therefore, it is resistant to stain and keeps its aesthetic appearance for a long time. It is also excellent in water and oil repellent performance, so it does not get stained if dirt is wiped off immediately. "NANO CLEAN" is an advanced antifouling process using NANO-process technology added on conventional fluorine resin processing, which will provide superior antifouling performance against soil and sand stain.



For more information on NANO CLEAN, please refer to page 18.



Based on a Japanese fabric master's experienced skill, FABTEX is finished with a beautiful top material where vinyl-coated polyester yarns are elaborately woven.



Combination of traditional plain weave technique and modern technology has created a classy image. With its reliable Japanese quality, FABTEX can work in any heavy-duty circumstances.



For detailed information about FABTEX, please refer to TOLI website, or contact TOLI sales rep.





TOLI DESIGN TILE CARPET EXCHROME

TOLI's print-carpet tile [EXCHROME] series offers a diverse lineup that emphasizes free design concepts on a carefully selected carpet texture. The rich colors and unique designs make various spaces attractive, including commercial facilities, accommodations, public facilities, and offices.



For more information on EXCHROME, you can see from this QR code.

A variety of designs and 3 different textures for your selection

EXCHROME offers 126 colors in total from stock and made-to-order patterns. Furthermore, if you take advantage of the easy order system "SCALE UP 4", it will allow you to order 4-times-enlarged design of your selection. Also, you can order to manufacture in your own original design by "Full-order system". The variation will expand infinitely.



EXC-5000 CUT & LOOP

The combination of glossy thread and cut & loop pile are expressive, it will create a high quality and luxurious atmosphere.



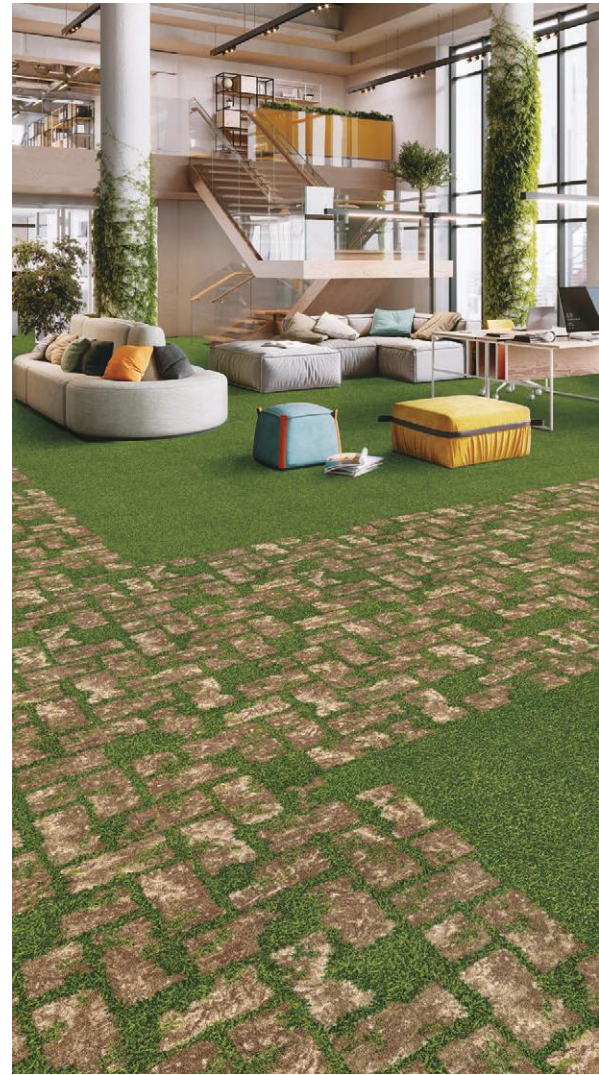
EXC-2000 LEVEL CUT

Cut piles, capable of expressing a wide variety of colors and delicate patterns, shall be attractive with vivid colors and bold designs.



EXC-1000 MIXED LOOP

Loop piles mixed with black solution-dyed yarn has a profound grain texture. Dirt also shall be less visible.



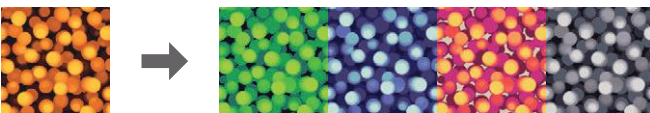
Full-order system and made-to-order colors

Made-to-order carpet tiles of "Full-order system" are manufactured in the customer's design on the carpet selected from three types of texture.

Full-order system (pattern example)



Custom colors for an existing design



original color number
EXC2513

Custom colors for an existing design

※ Depending on the surface texture, there may be designs that cannot be printed to satisfy your expectation.



Underlay Sheet

Underlay for carpet tiles that improves the comfort underfoot. Suitable for guest rooms and halls in hotels. It will enhance walking comfort by giving luxurious feel and provide a quiet environment.



Underlay Sheet for carpet tiles

TCPUS-4 (4mm)

TCPUS-6 (6mm)

Specification Overall thickness— 4mm / 6mm
 Dimensions— 950mm × 20m
 Packaging— 20m/roll (shipped in unit of roll)
 Installation— Regular Installation/Humid-resistant Installation

- If you lay heavy stuff such as a furniture, you cannot avoid the residual indentation. In that situation, please lay a bottom board on the floor covering to break up the heavy load.
- This product is the underlayment designed for carpet tiles.
- Use ECO GA Cement or ECO GA Cement EX as the adhesive to install carpet tiles on the top of this Underlay Sheet.
- In case the product is still curled up after unpacked, lay it down for the moment to be recovered before installation.
- Install TOLI logo side up (please see the image as below).
- There may be a jointed part in one roll, but it does not cause any effect on the quality nor the installation.
- The back side might be discolored, but it does not cause any effect on the performance.
- When you install 2 different rolls in length direction, each edge should be jointed at the seam.(Do not cut in the middle of the sheet.)
- After you install UNDERLAY SHEET FOR CARPET TILES, press with a roller until the air inside and the surface wrinkles are fully removed.
- Please unroll every other sheet in reverse direction.
- Note that the center of the sheet may be curled and irregular.
- PRIMECLASS (p.134) cannot be installed on this Underlay Sheet.



ISO 9001 Certified
TOLI Corporation

UNDERLAY SHEET FOR CARPET TILES can insulate the sound of footsteps and falling objects to downstairs.

JIS A 1440-1:2007 "Method of Measuring the Sound Insulation of the Floor Covering on the Concrete Sub-Floor in the Laboratory".

JIS A 1440-1:2007	Δ L class	Estimated L value (Conventional method)
GX-200	Δ LL (I) -3	L50
GX-200+UNDERLAY SHEET FOR CARPET TILES (4mm)	Δ LL (I) -4	L45
GX-200+UNDERLAY SHEET FOR CARPET TILES (6mm)	Δ LL (I) -5	L40

(Sub-floor: Slab with 150mm thickness)

Conducted by General Building Research Corporation of Japan

※The estimated L value (conventional method) is generally converted as shown above, but depending on the product and testing spot, it may deviate by one rank. Therefore, actual measurement is required for accurate L-value judgement.



※Please install the sheet with TOLI-logo side up.



Loose lay tiles can be easily coordinated with carpet tiles. Suitable for differentiating the areas and zoning in the office.



Loose Lay Tile Series

Can be easily installed on the raised floor and mortar sub-floor. Wax maintenance is not required.

01 Can be installed with a tackifier adhesive.



Both GX series and Loose-Lay Tile series can be installed with the same tackifier adhesive. Because of that, the tiles can be easily replaced for maintenance.

02 Can be installed together with carpet tiles.



Due to the same-sized module, both products can be installed together. We have also designed the carpet a little thicker, assuming that the shoe soles will sink down the piles when you step on.

03 5 standard functions

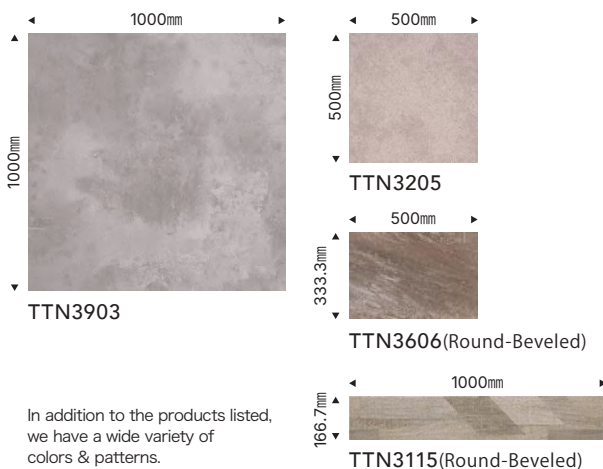


**except LOOSELAY 50 NW-EX (highly durable)

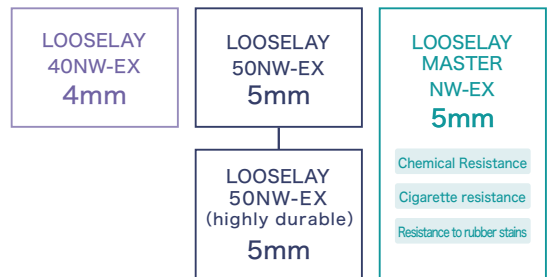
LOOSELAY 50NW-EX



Thickness 5mm



In addition to the products listed, we have a wide variety of colors & patterns.



For more information on Loose Lay Tile Series, you can see from this QR code.

RUG & MAT collection

TOLI Rug & Mat Collection focuses on material and textures. All the collection are the high-quality original rugs made by craftsmen on a piece-by-piece basis.



Luster Nylon for public

For public

To provide more relaxing feeling and higher quality in the offices and the hotels

Comfortable to step on with high density. Rugs suitable for the place with shoes on such as offices and hotels due to its durable texture.

function



Fire Retardant



Shoes Allowed

others

For more information, you can see from the following QR code.

For public



Custom



Standard



Hotel



Office



TOLI Ai Simulator Image Fit



Easy Interior Simulation by Shooting and Selecting!

TOLI Ai Simulator, Image Fit is a simulation system that can easily create installation image by synthesizing TOLI interior finishing material into your design space.

It's also compatible with room image you shot with your smartphone, etc., so please enjoy combinations of various product images into your own room image.



You can use Image Fit from this QR code.



For any space design

Photos shot by smartphones can be used.
Image Fit will help you visualise the design.



Authentic image in high quality

Room images are created with an appropriate scale.
You can also choose the installation method provided.



Quick and easy simulation

Just choose the space and product for simulation, and option of installing direction, then the synthesized image will come out right away.

If you have an internet connection, you can easily use it anytime.

Function symbols



Flame-retardant mark certified by NIF

A unified mark established by the Japan Interior Design Association (NIF). The product with this mark has passed the flame retardant performance test in accordance with Fire Defense Law.



Antistatic mark certified by NIF

A unified mark established by the Japan Interior Design Association (NIF). The products with this mark meets NIF standards of antistatic performance.



Antifouling mark

Indicates the antifouling property of the product. Such product is resistant to stain and has the performance to easily release dirt during maintenance. Daily maintenance is the most effective way to preserve aesthetics. Pay attention to the correct maintenance.



ECO MARK

ECO MARK-certified products are recognized as having the least impact on the environment throughout the entire life cycle from "manufacturing" to "disposal", and contributing to environmental protection.



Green Purchasing Law-compliant product mark

"Green Purchasing Law-compliant products" standardized mark defined by the Interior Fabrics Industry Activation Council. Standards are established to ensure that the total weight of unused fibers, recycled fibers, recycled plastics, and other recycled materials is 25% or more by weight of the entire product.



NANO CLEAN mark

"NANO CLEAN" is one of the technologies of TOLI, which is made by further upgrading the fluorinated-resin antifouling process. In addition to the conventional antifouling performance of fluorinated resins, special Nano-processing provides even better antifouling performance against dust and sand.



Eco-Friendly Product

Products contributing to reduction of the environmental load certified by TOLI



This product was awarded the Good Design Award sponsored by the Japan Design Promotion Association.



EcoLeaf Environmental Label

EcoLeaf is an environmental label to verify and publish quantitative environmental impact data of products obtained through LCA (Life Cycle Assessment: environmental impact assessment of a product over its lifetime, from resource extraction to disposal and recycling).

Traffic mark

The durability of each product is comprehensively judged and ranked based on the product standards and resistance to flattening, static load resistance, and wear resistance.



Commercial 4

Suitable for locations where heavy objects, such as carts, etc., travel frequently, such as airports, department stores, ordinary stores, offices, and entrance halls and lobbies in each facility.



Commercial 3

Suitable for locations with moderate walking volumes, such as office rooms, schools, hospitals, meeting rooms and banquet halls in hotels.

■ TOLI Showrooms are located at Tokyo, Osaka, Nagoya, Sapporo, Fukuoka & Shanghai. Visitors are advised to contact Global Department or Shanghai office, beforehand.

TOLI Corporation- Global Department

2-10-4 Higashi-Shinbashi,
Minato-ku, Tokyo,
105-0021 Japan
Phone : +81-3-5403-2078
Fax : +81-3-5472-6307
<https://toli-overseas.com>
E-mail : toli_contact@toli.co.jp

TOLI Corporation Singapore Branch

1 North Bridge Road, #21-10,
High Street Centre,
179094, Singapore
Phone : +65-3138-5052
Fax : +65-6491-5234
<https://toli-overseas.com>

TOLI (SHANGHAI) Corporation

Room 314, UYA055 Building 1,
No.55 Yuyao Rd., Jingan, Shanghai
200040 China
Phone : +86-21-6071-0688
Fax : +86-21-6071-0560
<http://www.tolish.com.cn>

TOLI North America Corporation

9247 Research Drive Irvine,
CA 92618, U.S.A.
Phone : +1-910-999-8654
<https://www.toli-na.com>
E-Mail : info@toli-na.com

Precautions

Notes on Selection

- Refer to the TOLI General Catalog for details of the various markings.
- On light-colored carpets, stain becomes more conspicuous. Care should be taken to the color when selecting the carpet.
- Please avoid use in locations where moisture may be rising constantly from subfloor. Such installation may eventually cause adhesion failure or odor emission.



If there is excessive alkaline moisture (more than 440 by the high-frequency moisture meter HI-520-2 type D. MODE = 8% or more moisture index) in the concrete subfloor, the plasticizer contained in the PVC decomposes, resulting in a nasty smell (alcoholic type). Prior to installation, make sure to check the moisture index by the concrete/mortar moisture meter "HI-520-2 type". If the moisture index is high, dry the subfloor thoroughly.

- The color and pattern of the printed photo can be different from the actual product.
- Catalog photos include synthesized image photos and CG's.
- This catalog is as of September 2024, and might be revised without any pre-notice.

Notes on Installation

- Please check TOLI General Catalog or installation manual before installation.
- When you use TOLI ECO GA Cement and ECO GA Cement EX, start to install the tiles after the adhesive becomes translucent. This will enable the tiles to be removed afterwards. Be careful not to put the tiles tightly.

Precautions for maintenance and use



Perform daily maintenance using a vacuum cleaner according to the traffic condition, to maintain the aesthetic appearance and prevent dust accumulation. In commercial floors, we recommend periodic intensive maintenance according to the traffic condition in addition to daily maintenance.

- Please pay attention not to damage the pile when using a vacuum cleaner with a brush attachment.
- When dirt adheres to the product, wipe it off immediately with care not to spread the dirt. Dirt will be difficult to remove over time. Some contaminants cannot be removed.
- When removing stains, stain remover, or neutral detergent, etc. should be used depending on the stain kind. Incorrect selection may lead to discoloration, etc.
- Chemicals, detergents with strong action, bleaching agents, etc., may cause discoloration or deterioration. Do not spill directly on floorings.
- Rubber products such as furniture leg rubber, rubber mats, paints, preservatives, insect repellents, etc. can contaminate and cause discoloration. Please avoid direct contact with these.
- There is a possibility of discoloration depending on environmental conditions such as direct sunlight. Use curtains, blinds, etc. to shade the floorings.
- Ventilation is recommended to eliminate the material odor.
- Please bear in mind that the indentation may be caused by heavy and long-time intensive load of pin heels, furniture legs, etc. Further attention shall be paid when installing on block-type raised floor.

TOLI is ISO9001 certified.

www.toli.co.jp

You can download image data from the product search content

2024.09 Promotion aid for professional use only

The list of the latest sample books is available by scanning here.



