

# New Designs



## Natural Allure and Organic Textures for May 2024

*Wallcoverings for commercial interiors,  
made in the UK.*



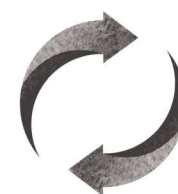


Our three new ranges now  
contain at least **20% recycled  
material.**

**Make a statement with walls that make a difference.  
Now crafted with a minimum of 20%  
recycled materials.**

A change in our fomulation has allowed us  
to achieve a minimum of **20%**  
**recycled content** in our new range of wallcoverings.

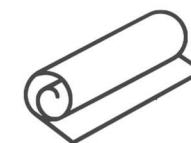
This initiative forms part of our continuous  
compliance with **ISO14001**, and represents a  
significant step in Newmor's commitment to a  
greener and more sustainable future for  
our business, our customers,  
and the planet.



20% Recycled Content



Made in the UK

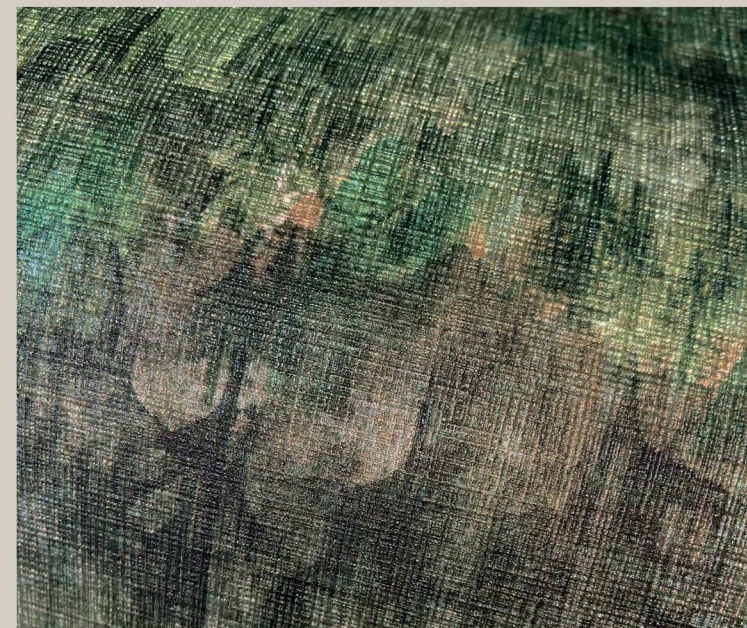
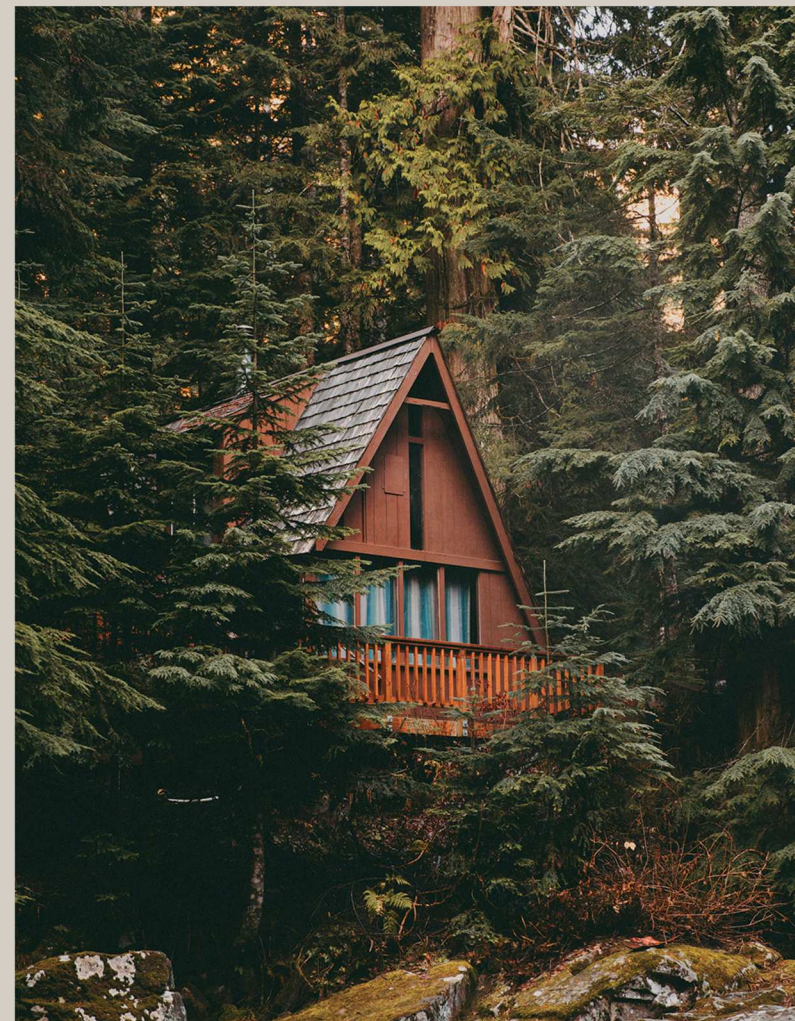
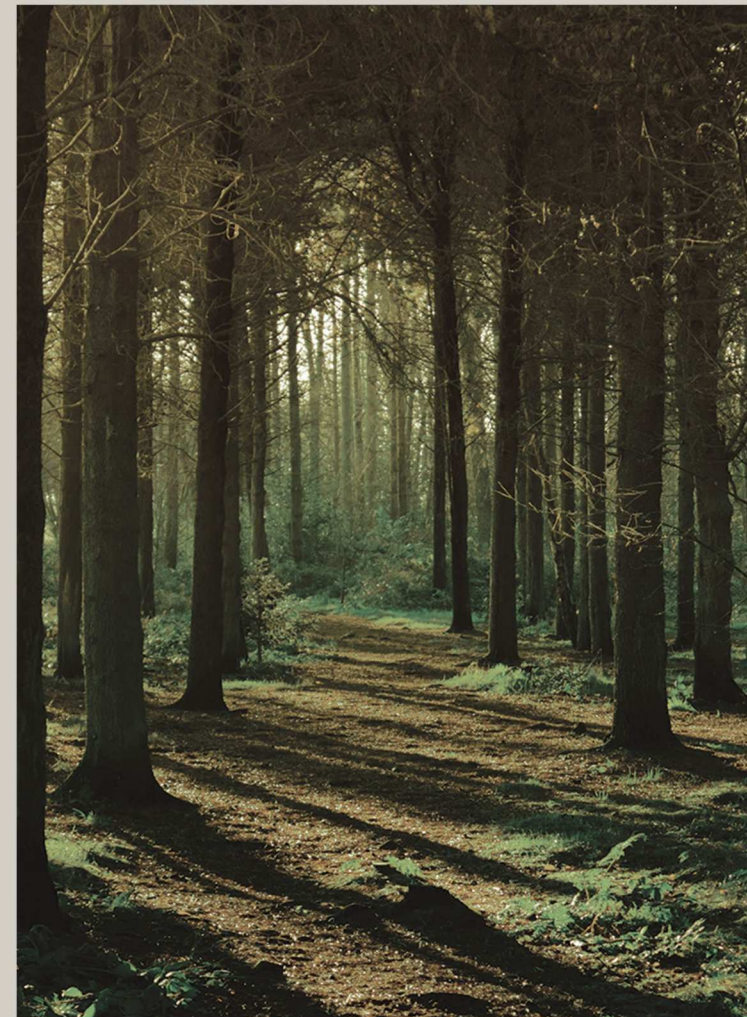


Same Durable Product

**NEWMOR**  
WALLCOVERINGS SINCE 1967

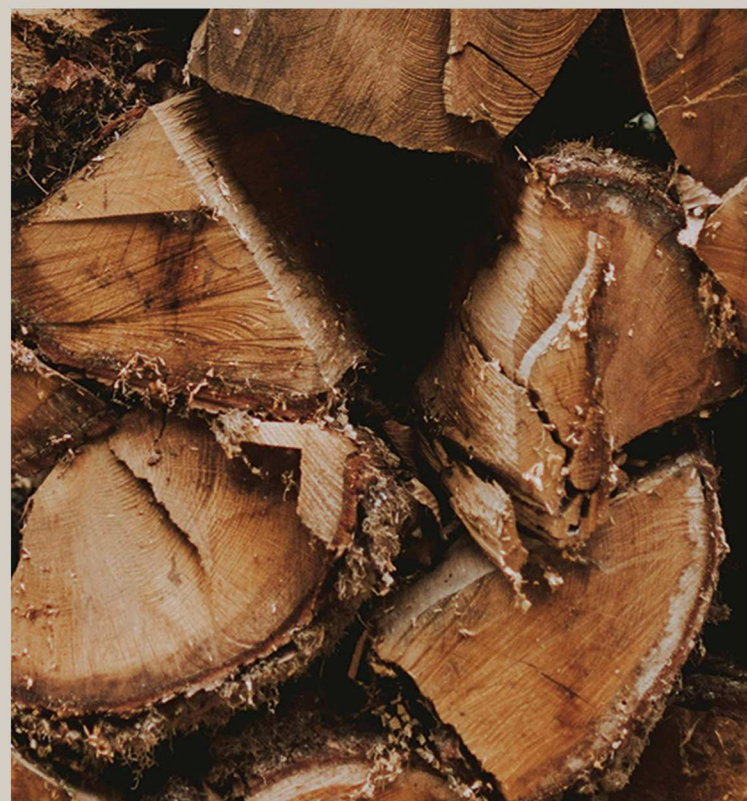


# inspiration



## Cedar

*With forest as far as the eye can see our Cedar design will transport you to a calming, scenic idle. .*



*Inspired by passing seasons we have six unique colourways; Frost, Storm, Birch, Bramble, Evergreen and Midnight.*



# Cedar



*Cedars's delicately painted tonal layers are reminiscent of morning mist over treetops.*







FROST



EVERGREEN



BIRCH



STORM



MIDNIGHT



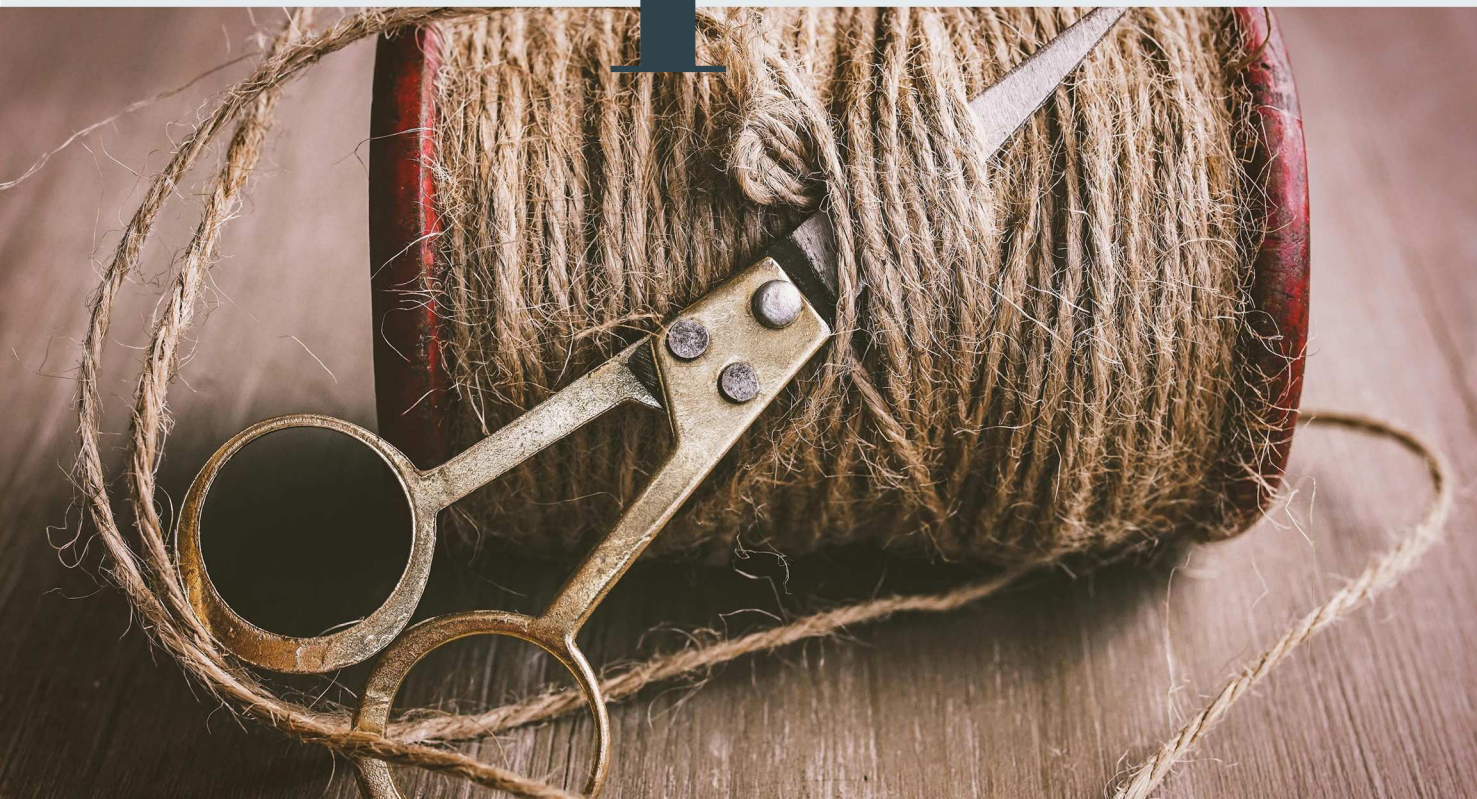
BRAMBLE

**NEWMOR**  
WALLCOVERINGS SINCE 1967

[newmor.com](http://newmor.com) | [sales@newmor.com](mailto:sales@newmor.com) | 01938 551 990

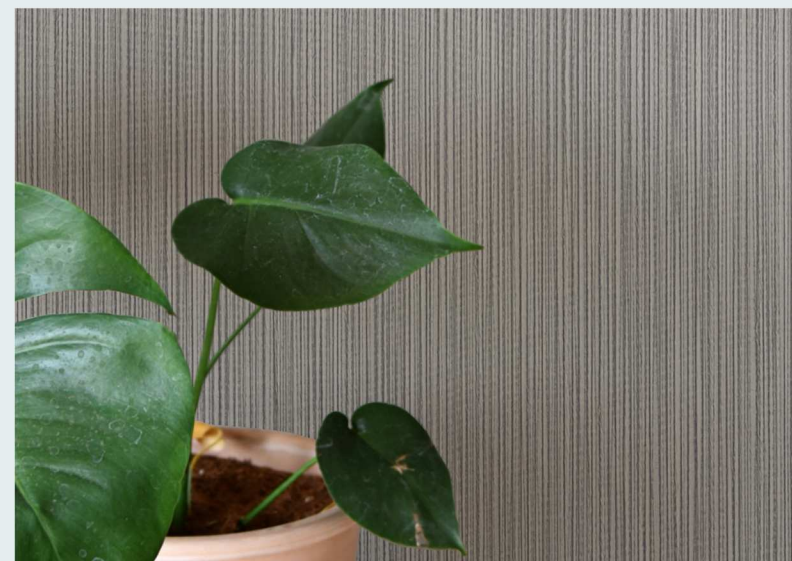
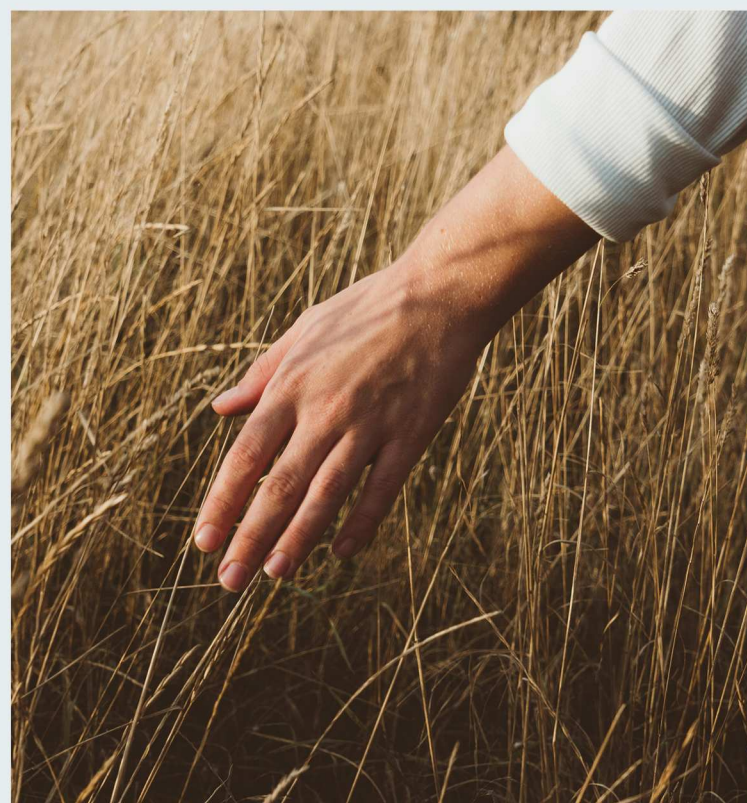


# inspiration



## Verde

*Verde is a vertical design inspired by organic textures found in the natural world.*



*This collection has a vast array of neutral colours punctuated by warming tones of deep greens, terracotta and slate blues.*



# Verde



*Verde's irregular movement and fine detail make it the perfect backdrop for commercial spaces.*





# Verde

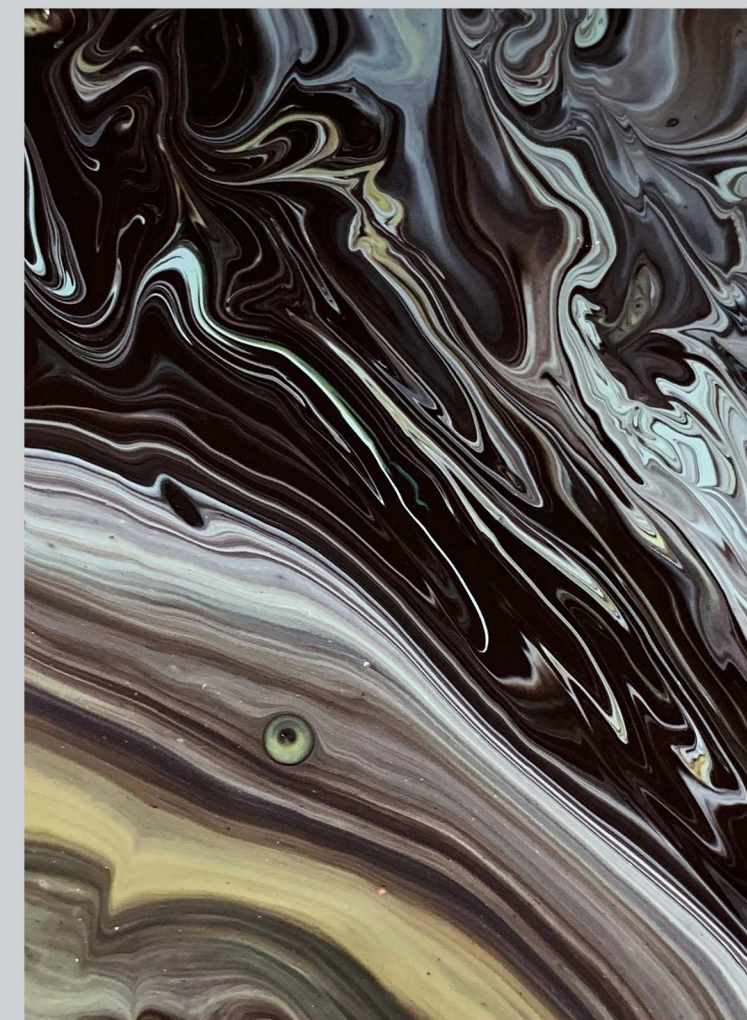
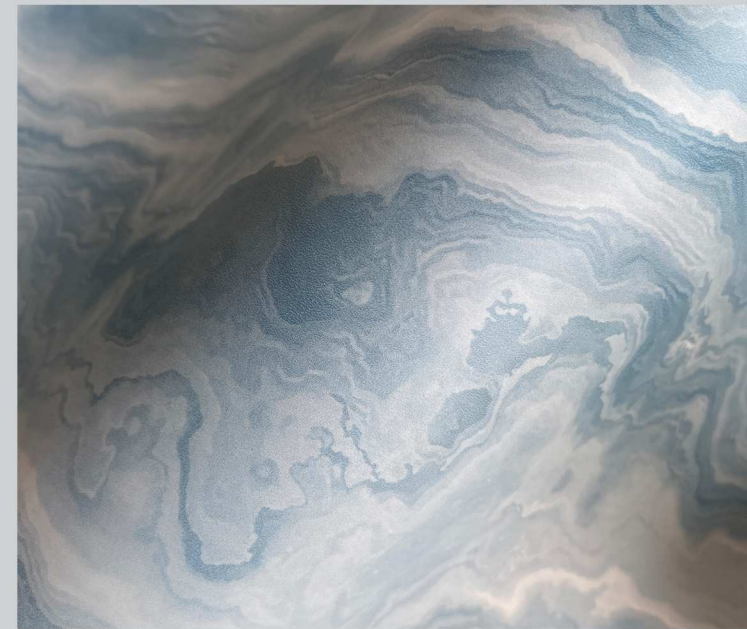
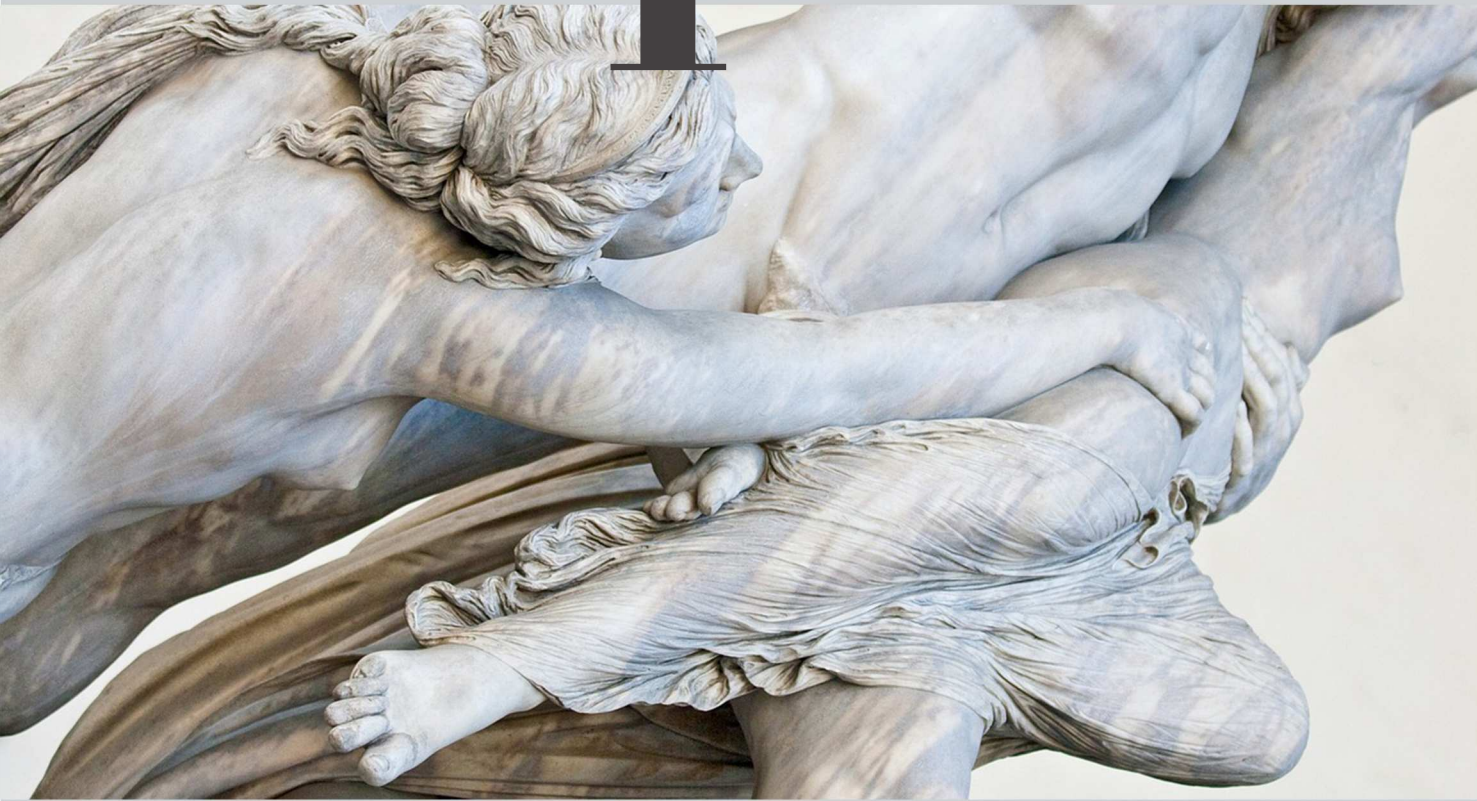


**NEWMOR**  
WALLCOVERINGS SINCE 1967

[newmor.com](https://newmor.com) | [sales@newmor.com](mailto:sales@newmor.com) | 01938 551 990



# inspiration



## Marmor

*Marmor – meaning marble in Welsh, is full of movement and intrigue. This diverse design has nods to nature and the organic world, as well as artisan craftsmanship*



*A soft subtle palette enhanced by stunning gold and silver mylar accents.*



# Marmor

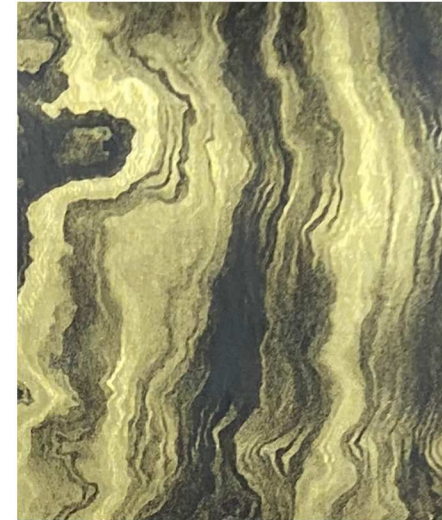


*Presented in two finishes - the matte options are subtle and sophisticated, reminiscent of polished stone or artistic paint effects, while the high shine mylar base adds show stopping drama to this collection.*





# Marmor



MAR 001



MAR 006



MAR 004



MAR 002



MAR 005



MAR 003

**NEWMOR**  
WALLCOVERINGS SINCE 1967

[newmor.com](https://newmor.com) | [sales@newmor.com](mailto:sales@newmor.com) | 01938 551 990





**NEWMOR**  
WALLCOVERINGS SINCE 1967

[newmor.com](http://newmor.com) | [sales@newmor.com](mailto:sales@newmor.com) | 01938 551 990